



Transport Access Program

Pymble Station Upgrade

COMMUNITY NOTIFICATION

OCTOBER 2021

The Pymble Station Upgrade is part of the Transport Access Program, a NSW Government initiative to provide a station that is accessible to people with a disability, limited mobility, parents/ carers with prams and customers with luggage.

Project update

We have recently started excavation and piling work in preparation for the new lifts. Throughout October, work will continue within and around the station, to carry out the following activities:

- Concreting and waterproofing of the new lift walls
- Installing hoarding and fencing around our work zones
- Upgrades to the toilets located on the platform.

Equipment to be used throughout the month of October includes excavators, piling machines, vacuum truck, road saw, tipper truck, flatbed truck, tilt tray, concrete truck and pumps, dump truck, various hand and power tools.

Temporary closure of taxi rank and footpath – Grandview Street

Starting in September, the taxi rank on Grandview Street has been temporarily unavailable and the footpath on the station side of Grandview Street temporarily closed east of the station. These closures are in place to allow hoarding and fencing to be installed safely around the work zone. A temporary footpath has been created and in place for pedestrians to detour around the work zone.

Please see map overleaf

Are you studying for the Higher School Certificate?

If a member of your household is studying for the Higher School Certificate (HSC), please contact us as soon as possible. We will make every effort to limit disruption to HSC students during the exam period.

Construction hours

To support the industry and continue the delivery of critical infrastructure, the NSW Government has introduced new rules allowing construction sites to operate on weekends and public holidays. Standard construction hours are now 7am to 6pm every day, including Sundays and public holidays. These

changes have been made to facilitate social distancing on construction sites and support the health and wellbeing of workers.

Tree removal in November

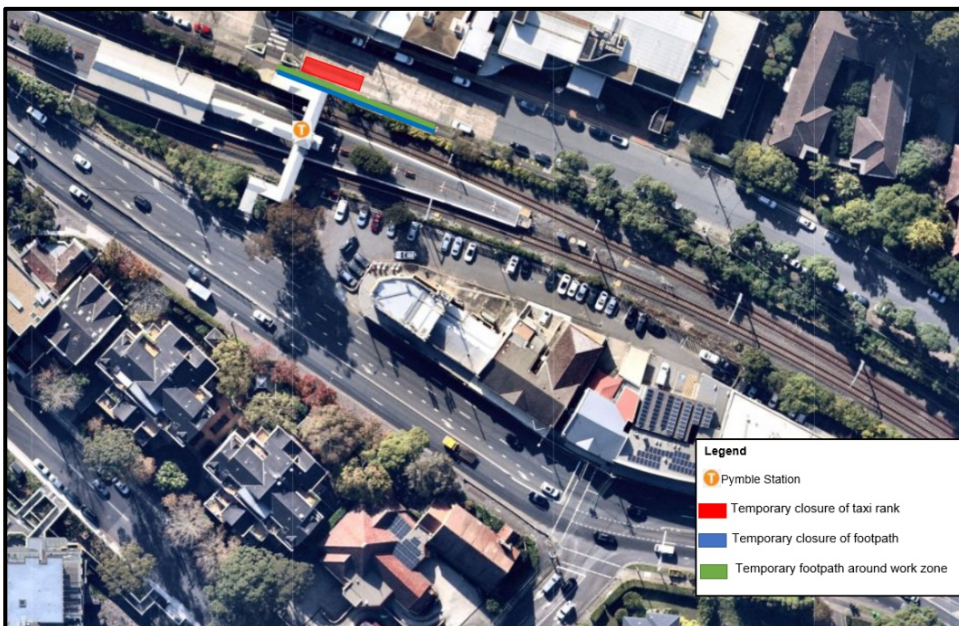
The Wallangarra White Gum Tree adjacent to the station entrance by the Pacific Highway has been inspected by an independent arborist. The assessment of the condition of the tree, has identified parts of the tree have a fungal disease called *Phellinus* sp. that creates an active decay in the wood which can lead to branches falling. We will remove the tree and replant a new tree in the nearby area.

Keep in touch

We will continue to keep the community informed with regular project updates published on the project website transport.nsw.gov.au/pymble. If you would like to be added to the project distribution list or for more information on the Pymble Station Upgrade, please contact projects@transport.nsw.gov.au or call the Project Infoline on **1800 684 490**.

For all urgent enquiries or complaints regarding our construction activities, please call our 24-hour Construction Response Line on **1800 775 465**.

Map of work area



Chinese (Simplified)

这份文件包含你所在地区公共交通工程项目的重要信息。如果你需要传译服务，请致电翻译与传译服务机构，电话131 450，要求他们为你接通交通工程部(Transport for NSW)，电话是 (02) 9200 0200。传译员会为你做翻



This document contains important information about public transport projects in your area. If you require the services of an interpreter, please contact the Translating and Interpreting Service on **131 450** and ask them to call Transport for NSW on **1800 684 490**. The interpreter will then assist you with translation.

For more information call **1800 684 490**, email projects@transport.nsw.gov.au or visit transport.nsw.gov.au/pymble
For urgent enquiries or complaints regarding construction activities, please call 24 hours **1800 775 465**