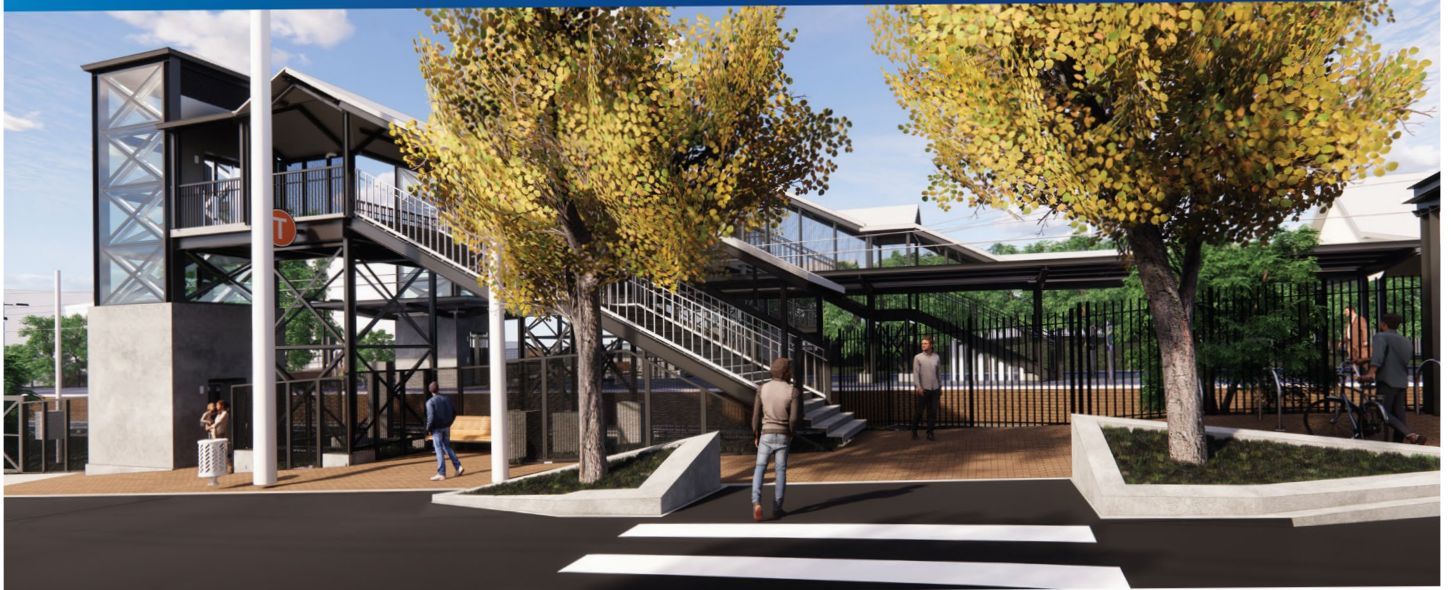


Transport Access Program Pymble Station Upgrade Planning approval received



Artist's impression of the proposed Pymble Station Upgrade, subject to change during detailed design

The NSW Government is improving accessibility at Pymble Station

Planning approval has been received for the upgrade to Pymble Station. The approval follows the public display of the project's Review of Environmental Factors, from 2 December – 16 December 2020. The project team received 35 submissions during the public display period. Each submission was considered by the project team and responded to in a Determination Report. Transport for NSW would like to thank the community for their submissions.

Feedback from the community

The key themes that emerged during the public display period included:

- support for improving accessibility at Pymble Station
- requests that the design be sympathetic to the heritage and character of the station
- requests for a formalised kiss and ride zone on Grandview Street
- improving pedestrian access to and from the Pacific Highway car park.

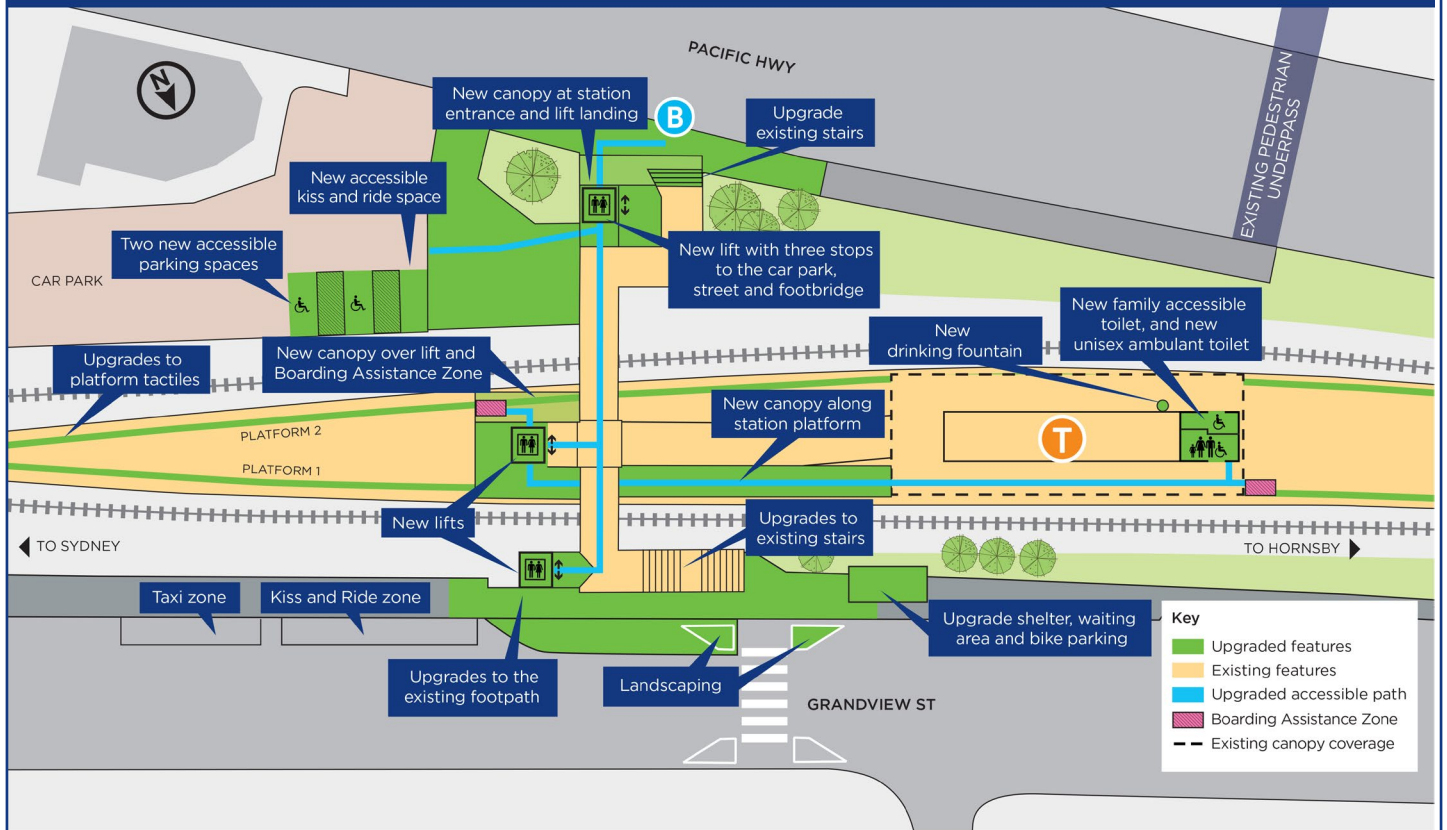
The upgrade will include:

- three new lifts to connect Pacific Highway, Grandview Street and the station platforms to the existing footbridge
- a new forecourt on the Pacific Highway side, connecting the existing footpath and bus stop to the new lift
- improvements to accessible parking spaces near the Pacific Highway lift entrance
- improvements to amenities including a new family accessible toilet and a unisex ambulant toilet
- footpath upgrades on Grandview Street
- new handrails and treads on stairs where required
- additional CCTV and lighting.

Next steps

Construction is expected to commence mid 2021 and take up to 24 months to complete.

Key features of the proposal



Key features of the proposed Pymble Station upgrade, subject to detailed design.

Construction timeframes

Major projects in and around the rail corridor like station upgrades are complex and require careful planning. Preparation work needs to be completed before the new lifts can be installed. This includes service relocation, excavation, piling and platform work and installing new electrical services underneath the tracks.

For the safety of the community and workers, and minimise disruptions to train services, major construction activities are required to be completed during scheduled rail shutdown periods when trains don't run. This means station upgrades generally take longer to build than other construction projects outside the rail corridor.

Design updates

The original design included lift shafts constructed primarily of glass, with steel edges, and a brick base. Following feedback from the community and further consultation with key stakeholders, the design has been refined to remove the brick base, and to include a steel frame and glazed enclosure, which complements the existing footbridge, and celebrates the unique character of the station.

The use of glass in the lift shafts is also beneficial for crime prevention, passive surveillance, and providing natural light to the areas around the lift shaft.

Contact us

If you would like to speak with the project team please call **1800 684 490** or email us at projects@transport.nsw.gov.au

The Determination Report and associated Conditions of Approval are now available on the Transport for NSW website: transport.nsw.gov.au/pymble



This document contains important information about public transport projects in your area. If you require the services of an interpreter, please contact the Translating and Interpreting Service on **131 450** and ask them to call Transport for NSW on **1800 684 490**. The interpreter will then assist you with translation.

For more information call **1800 684 490**
Email projects@transport.nsw.gov.au or visit transport.nsw.gov.au/pymble

