

Redfern Station Upgrade

New Southern Concourse

PROJECT NEWSLETTER

December 2021

It has been nearly one year since major construction began on the Redfern Station Upgrade – New Southern Concourse project. Since then, we have achieved a significant amount of work on the project and transformed the Redfern skyline. We would like to thank the local community for their continued support, understanding and patience as we deliver this important project and wish you a safe and happy holiday season. We are pleased to highlight some of our key milestones below.

Station area and platforms

- A total of 16 bridge beams installed across platforms 1 to 10, connecting one side of the rail corridor to the other
- A total of 364 tonnes of concrete was used to install these beams, which is equal to the weight of more than seven Tangara Trains
- Hearing loops for station announcements have been wired across the new bridge foundation
- Successful relocation of the heritage building on Platform 1

Marian Street

- Installation of all underground services and foundation constructed for the new electrical building that will power the facilities for the new bridge
- Construction and launch of the bridge canopy have commenced and will continue throughout November and December. This canopy will provide cover over the new footbridge

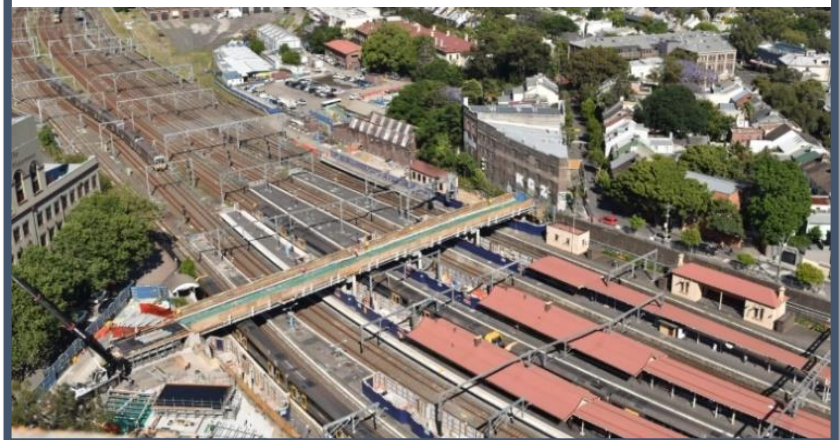
Little Eveleigh Street

- Little Eveleigh Street site establishment and work within and around the 125-127 Little Eveleigh Street building has commenced and will continue
- 66 potholes completed on Little Eveleigh Street and Ivy Street.

This picture taken in January 2021 shows the beginning of construction with a few of the bridge footings and support structures established.



This picture taken in November 2021 shows the new bridge spanning platforms 1 to 10 connecting Marian and Little Eveleigh Street.



Works in early 2022 and construction of the Little Eveleigh Street shared zone

We will close out the year by continuing our construction of the bridge canopy, stairs and lift shafts, with construction of the Little Eveleigh Street shared zone is due to commence in early 2022. We will be providing some more detailed information to residents of Little Eveleigh Street closer to the date including potential impacts, mitigation measures, co-design, and parking and traffic changes.

Heritage building relocation

Significant preparation and planning over a number of months has resulted in the successful relocation of the heritage building on Platform 1. The 70 tonne building was moved a short distance to make space for new stairs and lift shafts for the New Southern Concourse. Heritage is an important part of the project, and we worked with a number of key stakeholders and consultants to ensure the milestone event was seamlessly achieved.

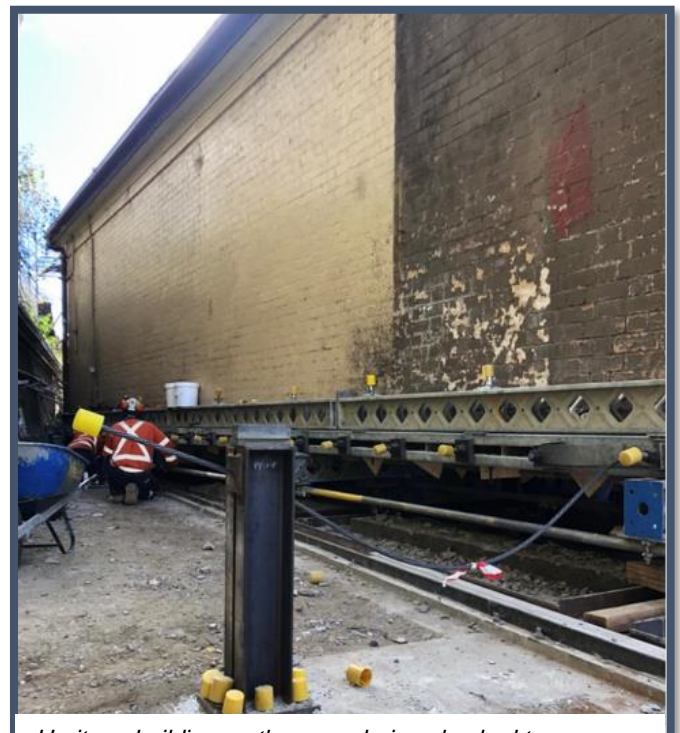
It is believed that the building was built in 1884 and is one of the rare Victorian Station Buildings. It has served a number of purposes over the years including an electrical workshop, ticket office, station office and a railway telegraph office. The conservation of the building is a priority for the project to maintain the integrity of the heritage of Redfern Station alongside its new and necessary infrastructure.

This major achievement for the project required extensive and precise engineering considerations. Several stages needed to be thoroughly investigated including preparation for the move, the move itself, and the reinstatement of the building back to its original state.

The building was strengthened and all outside features, such as windows, were removed and reinstalled. The existing footings were taken out and the bricks attaching the footing of the building were removed one by one. These activities allowed the building to be placed onto a metal pulling frame installed underneath the building. The building was rotated into position and moved approximately 18 meters onto a newly poured concrete foundation. We are continuing to work on the reinstatement of the building in its new location.



Heritage building on top of metal pulling frame after the building had been dismantled from its previous footings brick by brick. This image shows the building being rotated to move into its new position.



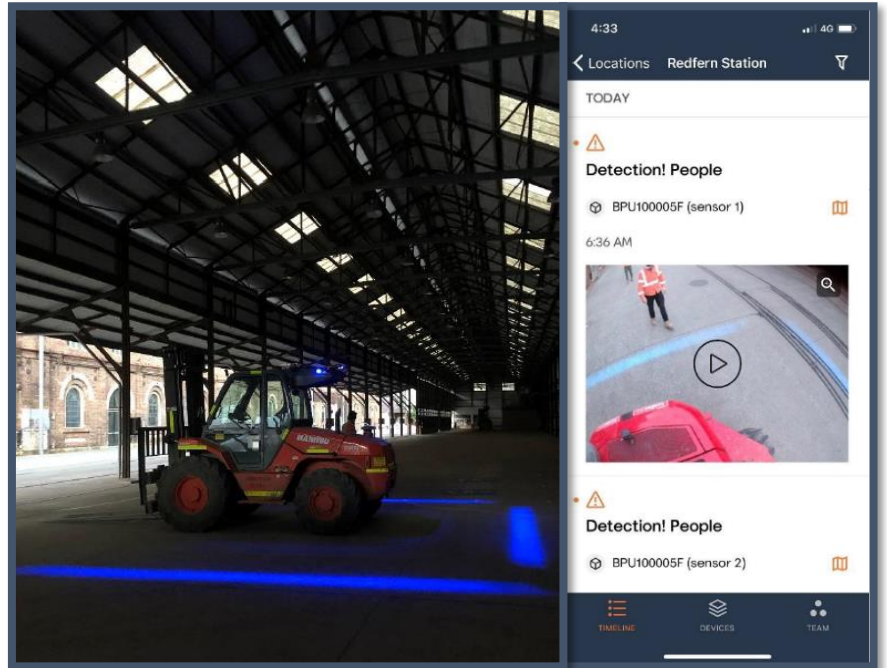
Heritage building on the move being checked to ensure everything was in place. The team played close attention to the heritage building to ensure it was properly conserved so it could be reinstated to its original condition.

Safety spotlight

Our project team continually explores opportunities to implement innovative and efficient technologies and keep our site and our people safe. We also strive to consider new safety ideas and reevaluate and improve current safety practices.

Blindsight is an innovative and relatively new technology that the Redfern Station Upgrade Project Team have recently introduced to help improve the safety of operating fixed and mobile equipment around people. Blindsight has recently been installed on a frequently used forklift (pictured right). It uses artificial intelligence (AI) technology and sensors to alert vehicle operators to people or other objects in their blind spots.

Our project is trialling this technology and is one of the first projects in the world to adopt this safety system. The trial has been positive so far with the technology proving valuable in controlling equipment and people interactions, and successfully assisting people in remaining safe during work activities.



Above: Blindsight technology and sensors shown on the left highlights the blind spots of the vehicle operator. If someone walks into the blue square the driver is alerted as shown in the picture of the app on the right.

Want to stay in touch?

All notifications and newsletters for the Redfern Station Upgrade – New Southern Concourse Project are available online. You can access them through our website <https://www.transport.nsw.gov.au/redfern> or sign up to our email distribution list by emailing projects@transport.nsw.gov.au.

Contact Us

For more information or to subscribe to project updates:

 Project information line: **1800 684 490**

 24/7 construction response line: **1800 775 465**

 projects@transport.nsw.gov.au

 www.transport.nsw.gov.au/redfern

Mail to:

Redfern Station Upgrade – New Southern Concourse
PO Box K659, Haymarket NSW 1240
Reference No: **SSI-10041**



131 450 If you require the services of an interpreter, please contact the Translating and interpreting Service on **131 450** and ask them to contact Transport for NSW on **1800 684 490**.

January 2022 to March 2022 forecast

To minimise disruption to train services and for the safety of the community and workers, weekend work is completed during scheduled trackwork weekends. The table **below** provides an overview of the weekends scheduled for the project over the next three months.

This work may be noisy at times and we will implement measures to reduce potential impacts such as turning off equipment when not in use and where possible using noise blankets. We will also notify residents directly where a direct noise impact is expected to occur closer to the time of impact.

Quarterly Look-ahead		
Upcoming weekend and night work at Redfern Station January – March 2022:		
Upcoming weekend and night work	Scope summary <i>further details provided closer to the time</i>	Construction location
2am Saturday 22 January to 2am Monday 24 January	Installation of concrete stairs, lift shafts, and various bridge components	Across various platforms and at the North Eveleigh and Marian Street site compounds.
2am Saturday 19 February to 2am Monday 21 February	Installation of concrete stairs, lift shafts, and various bridge components Various electrical work activities	
2am Saturday 5 March to 2am Monday 7 March	Installation of concrete stairs, lift shafts, and various bridge components	
2am Saturday 19 March to 2am Monday 21 March	Installation of concrete stairs, lift shafts, and various bridge components	
2am Saturday 26 March to 2am Monday 28 March	Installation of concrete stairs, lift shafts, and various bridge components Platform resurfacing work	
Mid-week night works		
<p>Fit out of the bridge canopy is proposed from 6pm to 6am in early 2022, for two to four nights per week (potentially including weekend nights), subject to approval. Further details about this upcoming proposed work will be provided in early 2022. This work is not expected to be noisy.</p> <p>In addition to the bridge canopy fit out, other activities such as material and equipment removal, deliveries, concrete pouring, and electrical work may occur. Due to unforeseen weather events some of these activities may run into the evening past 6pm.</p> <p>Work will also continue during this period in standard construction hours. We understand working out of standard construction hours may cause disruption, with all efforts made to minimise impacts where possible. We will keep the community informed closer to these dates when the work activities, potential impacts and timing for each weekend are confirmed. If you have any questions or feedback on these dates please contact us at projects@transport.nsw.gov.au or 1800 684 490 by 17 December 2021. You can also contact us 24 hours on 1800 775 465.</p>		