

# Redfern Station Upgrade

## New Southern Concourse

PROJECT NEWSLETTER

September 2021

### Project update

The skyline over Redfern has certainly begun its transformation with the installation of the first two lots of bridge beams which extend across Platforms 4 to 10. Once the final bridge beams go in this month, work on construction of the bridge canopy, stairs and lift shafts will commence within weeks. Work activities relating to the two new entrances on Marian Street and Little Eveleigh Street continue to progress well, in addition to work on the services building for the footbridge within the Marian Street compound.

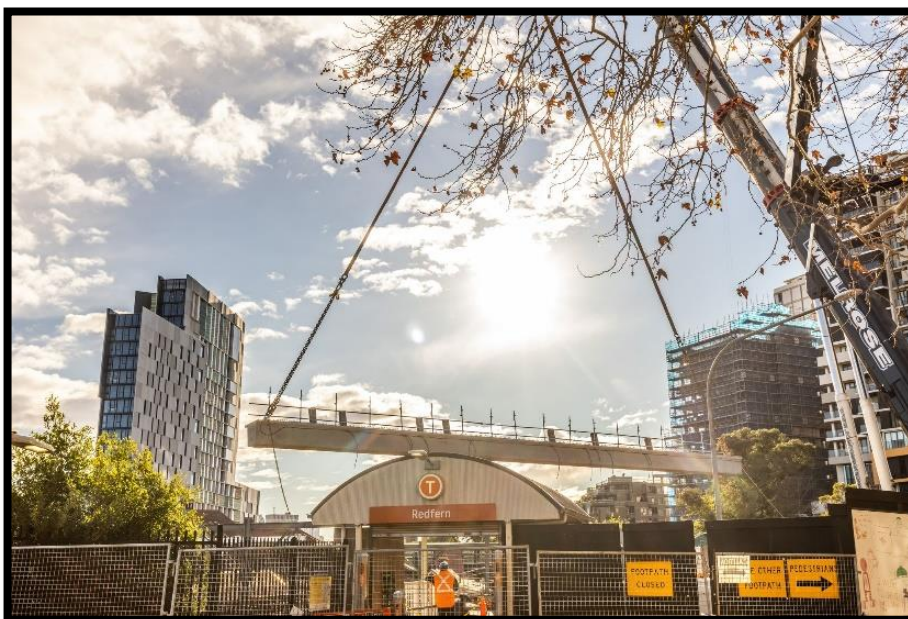
We would like to continue to thank all members of our community for your patience and support as we deliver this infrastructure.

### Bridge beam installation

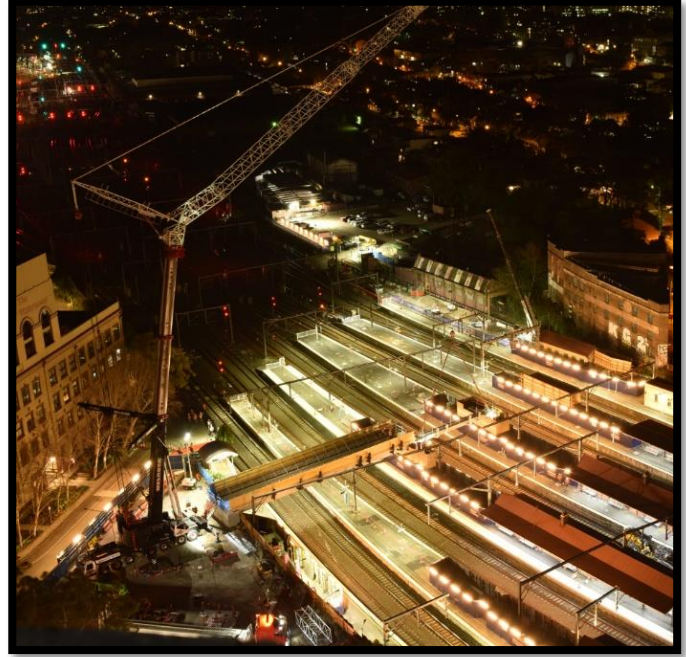
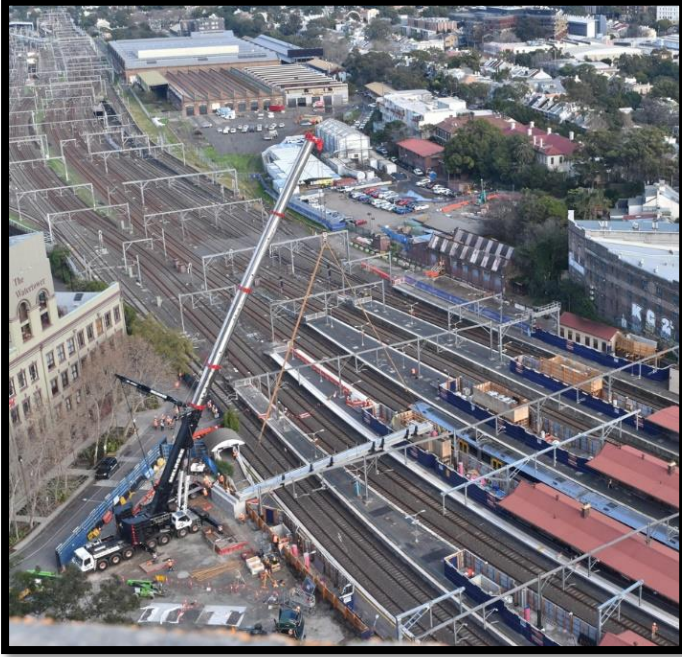
On the weekends of Saturday 17 and Sunday 18 July and Saturday 31 July and Sunday 1 August, we installed the bridge beams along Platforms 4 to 10. Some of these beams were up to 31 metres long and weighed up to 45 tonnes.

Our team completed a significant amount of planning for the safe installation of the bridge beams including managing the safe transportation, delivery and lifting of the beams to our work site. The planning for these critical activities has been in progress for the last nine months and signify a momentous milestone for the project.

The footbridge will connect the two sides of Redfern Station from Marian Street to Little Eveleigh Street, and the remaining beams across Platforms 1 to 4 will be installed on Saturday 11 and Sunday 12 September.



*The first bridge beam being lifted into place making up the New Southern Concourse.*



*An aerial of the day time crane lift of the bridge beams from Platforms 10 to 7 on Saturday 17 July and Sunday 18 July.*

*An aerial of the night time crane lift of the bridge beams from Platforms 7 to 4 on Saturday 31 July and Sunday 1 August.*

## **Right Rubbish, Right Bin Campaign**

Rubbish that is sorted incorrectly contributes to a high rate of waste contamination. This means that, if too many non-recyclable materials are put into the recycling bin, all of the material in the recycling bin could potentially end up in landfill.

To try and combat this problem, the project team have recently installed SMART BIN technology behind the bins at the Gibbons Street entrance to Redfern Station. SMART BINS are an Australian first innovative technology and are also contributing to the ongoing commitment our project has to sustainability. This technology is an intelligent waste management system that uses a camera to recognise different types of waste, and displays the correct waste bin for disposal.



*New SMART BIN technology installed behind the bins at the Gibbons Street entrance to Redfern Station.*

The installation of SMART BIN technology is providing customers with an opportunity to trial this new way of waste disposal and test if it will be an effective way to improve recycling and divert recyclables from being put into landfill.

If you are passing through the Northern Concourse, test out the bins and see if you are disposing of your waste correctly.

## Partnering innovation and sustainability on our project

Our project team is always exploring, testing and implementing innovative and sustainable technologies. A specific focus of ours over the last few months has been considering the impacts of COVID-19 restrictions on a largely 'hands on' industry.

Recently, we switched our site office power source to a biodiesel generator (pictured right). This conversion has led to a reduction in greenhouse gas and carbon emissions, utilisation of solar energy and super silenced technology which makes the generator much quieter than traditional diesel generators.

BuiltView is another innovative technology we have introduced throughout the restrictions as our non-essential workers work from home. BuiltView is a new digital platform that allows site staff to receive progress updates from site using 360 degree videos and image sharing technology. This technology has facilitated continued engagement from the project team and also encourages a flexible approach to the workplace.

These technologies complement other innovations such as SiteHive, which is an environmental compliance management system that monitors noise, vibration and dust levels. Real time information provided by SiteHive ensure that we are operating within our project guidelines for potential noise, vibration and dust impacts. The system provides live environmental data directly from site allowing a solutions-based approach if any work activities need to be reassessed in order to manage and minimise the environmental impacts of the project.



*The newly installed biodiesel generator powering the project's site office.*

### Want to stay in touch?

All notifications and newsletters for the Redfern Station Upgrade – New Southern Concourse Project are available online.

You can access them through our website

<https://www.transport.nsw.gov.au/redfern>

or sign up to our email distribution list by

emailing [projects@transport.nsw.gov.au](mailto:projects@transport.nsw.gov.au).

### Contact Us

For more information or to subscribe to project updates:

 Project information line: **1800 684 490**

 24/7 construction response line: **1800 775 465**

 [projects@transport.nsw.gov.au](mailto:projects@transport.nsw.gov.au)

 [www.transport.nsw.gov.au/redfern](http://www.transport.nsw.gov.au/redfern)

### Mail to:

Redfern Station Upgrade – New Southern Concourse  
PO Box K659, Haymarket NSW 1240

Reference No: **SSI-10041**



If you require the services of an interpreter, please contact the Translating and Interpreting Service on **131 450** and ask them to contact Transport for NSW on **1800 684 490**.

## October 2021 to December 2021 forecast

To minimise disruption to train services and for the safety of the community and workers, weekend work is completed during scheduled trackwork weekends. The table **below** provides an overview of the weekends scheduled for the project over the next three months.

This work may be noisy at times and we will implement measures to reduce potential impacts such as turning off equipment when not in use and where possible using noise blankets. We will also notify residents directly where a direct noise impact is expected to occur closer to the time of impact.

Quarterly Look-ahead		
Upcoming weekend and night work at Redfern Station October – December 2021:		
Upcoming weekend and night work	Scope summary <i>further details provided closer to the time</i>	Construction location
2am Saturday 9 October to 2am Monday 11 October	Removal of overhead wiring structures and platform drainage work	Across various platforms. North Eveleigh and Marian Street site compounds.
2am Saturday 16 October to 2am Monday 18 October	Installation of service routes, concrete stairs and platform drainage work	
2am Saturday 30 October to 2am Monday 1 November	Installation of bridge canopy and associated temporary works	
2am Saturday 6 November to 2am Monday 8 November	Installation of steel beams, concrete stairs, bridge canopy and associated temporary works	
2am Saturday 13 November to 2am Monday 15 November	Installation of steel beams, concrete stairs, bridge canopy and associated temporary works	
2am Saturday 20 November to 2am Monday 22 November	Installation of steel beams, concrete stairs, lift shafts, bridge canopy and associated temporary works	
2am Saturday 27 November to 2am Monday 29 November	Installation of steel beams, concrete stairs, lift shafts, bridge canopy and associated temporary works	
2am Saturday 11 December to 2am Monday 13 December	Installation of steel beams, concrete stairs, lift shafts, bridge canopy and associated temporary works Platform resurfacing work	
2am Saturday 18 December to 2am Monday 20 December	Installation of steel beams, concrete stairs, bridge canopy and associated temporary works	
2am Sunday 26 December to 2am Friday 31 December	Installation of steel beams, concrete stairs, lift shafts, bridge components, bridge canopy and associated temporary works	
<u>Mid-week night works</u>		
Materials and equipment will be periodically removed or delivered to the platforms at night and electrical work may occur up to two nights per week. This work is not expected to be noisy.		
Installation of the bridge canopy and associated temporary works is proposed from 6pm to 6am 31 October to 31 December, for 2-4 nights per week, subject to approval. Further details will be provided to potentially impacted receivers on these works.		
Work will also continue during this period in standard construction hours. We understand working out of standard construction hours may cause disruption, with all efforts made to minimise impacts where possible. We will keep the community informed closer to these dates when the work activities, potential impacts and timing for each weekend are confirmed. If you have any questions or feedback on these dates please contact us at <a href="mailto:projects@transport.nsw.gov.au">projects@transport.nsw.gov.au</a> or <b>1800 684 490</b> by <b>27 September 2021</b> . You can also contact us 24 hours on <b>1800 775 465</b> .		