



Transport Access Program

Roseville Station Upgrade

Temporary closure of Hill Street

June 2021

Transport for NSW is upgrading Roseville Station to make it easier to access, especially for people with a disability or limited mobility, parents/carers with prams, and customers with luggage.

When will Hill Street be closed?

Hill Street will be temporarily closed to traffic from **10pm Friday 4 June to 8pm Sunday 6 June 2021**.

What is happening at Hill Street?

Up to five power poles that are supporting overhead electrical cables between Roseville Avenue and Victoria Street are being replaced with underground cables. The removal of this infrastructure will allow a new lift to be constructed from Hill Street to the Roseville Station footbridge. Two new poles will also be installed.

The overhead wires that will be removed are currently supplying power to trains and train signalling equipment, and can only be safely removed during a Sydney Trains trackwork period when trains are not running.

Why does Hill Street need to be closed between Victoria Street and Roseville Avenue?

For the safety of workers, motorists and pedestrians, the road needs to be closed so the project team can create a safe work zone. This will allow the safe removal of the overhead wiring and the redundant poles.

The work requires the use of large machinery, equipment and heavy vehicles to lift and manoeuvre seven redundant poles and replace with two new poles which are 22 metres in length.

The eastern footpath will remain open and pedestrian access to businesses on Hill Street will be maintained at all times.

What other work is happening over the weekend?

The existing stair treads from Hill Street to the station footbridge will be individually removed to allow sand blasting to occur. Sand blasting helps to remove old paint and clean the surface area so that new paint can stick and stair treads can be reinstated.

Electrical work will also be carried out inside the station building.

The work will take place continuously from 10pm Friday 4 June to 5am Monday 7 June during a Sydney Trains trackwork weekend when trains are not running and the station is closed.

What changes will there be to pedestrian access?

The footbridge and station will be closed from 10pm Friday 4 June to 8pm Sunday 6 June. During this time pedestrians will need to detour via Clanville Road.

The footpath on Hill Street (west) will be closed and pedestrians will need to use the footpath on the eastern side of the street.

Access to businesses on Hill Street will be maintained at all times.

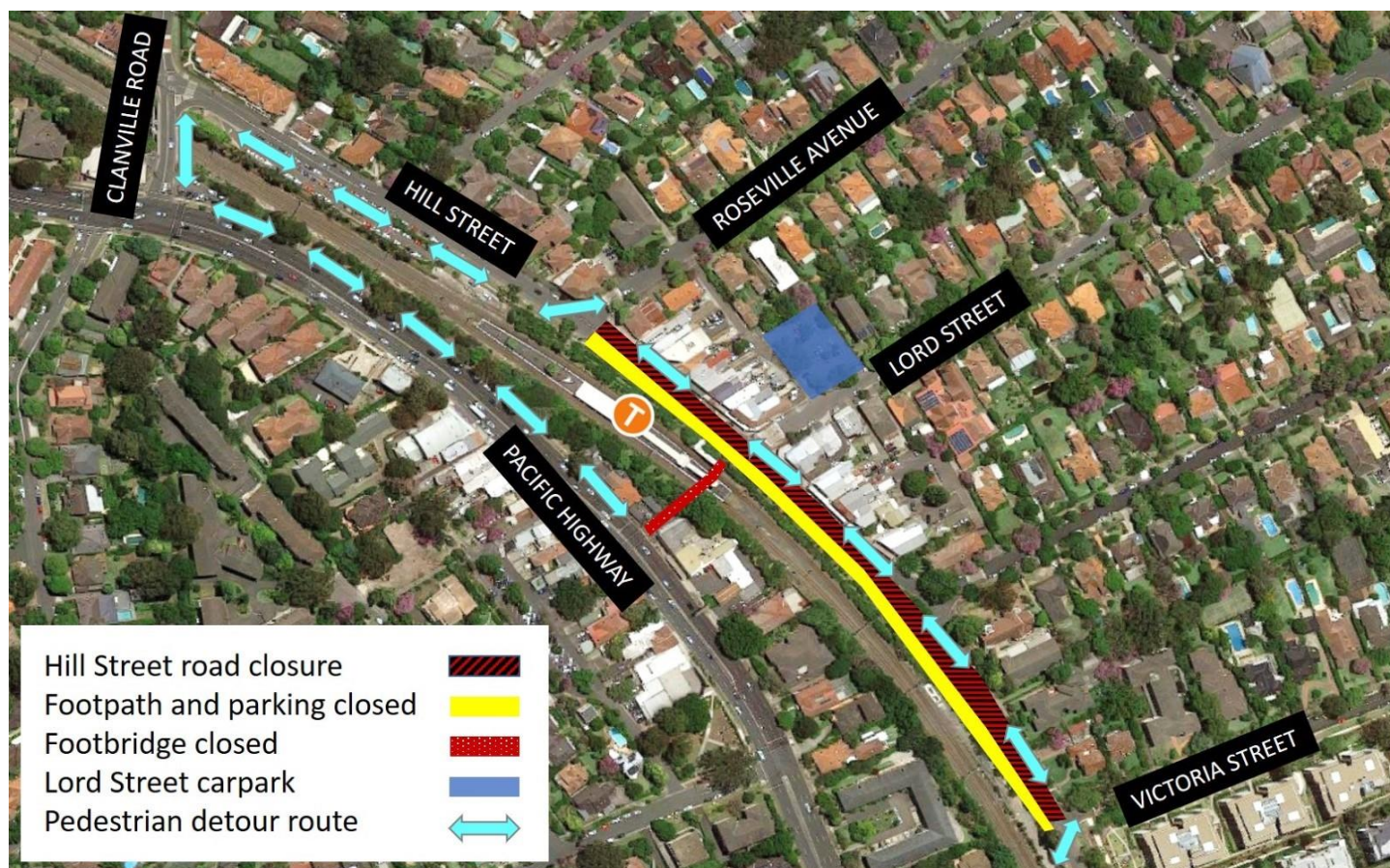
For more information call **1800 684 490**,

Email projects@transport.nsw.gov.au or visit transport.nsw.gov.au/roseville

For urgent enquiries or complaints regarding construction activities, please call 24 hours **1800 775 465**.

Will the pedestrian footbridge at Roseville Station be open?

For the safety of pedestrians and to allow work to be carried out on the stairs, the footbridge connecting Pacific Highway to Hill Street will be temporarily closed during this time. Pedestrians will need to detour via Clanville Road and add approximately 8 minutes to their journey. Please allow extra travel time and see below for proposed detour from Pacific Highway to Hill Street.



Pedestrian access changes from 10pm Friday 4 June to 5am Monday 7 June

Are there changes to buses that stop on Hill Street?

Due to the temporary closure of Hill Street, bus route 558 Lindfield will be diverted and four bus stop locations will be temporarily closed. During this time, customers will need to use bus stops at Archer Street or Gerald Avenue. Alerts on trip planner apps to notify customers in advance are now live.

Bus stop changes will also be communicated to the wider community via geo-targeted social media posts and temporary signage located at all affected bus stops.

Where will rail replacement buses leave from?

There will be no change to rail replacement buses, which will continue to operate from either side of the Pacific Highway as normal during a Sydney Trains trackwork period.



Bus stop closures and diversions from 10pm Friday 4 June to 5am Monday 7 June

Will there be detours for motorists?

Vehicle diversions will be in place from 10pm Friday 4 June to 8pm Sunday 6 June. Residential and emergency vehicle access will be maintained at all times. Traffic controllers will be in place to assist motorists. Signage, including large variable messaging boards, will be installed to communicate the upcoming changes to the community. Traffic control and detour signage will also be implemented at the commencement of the closure.



Map of vehicle detours from 10pm Friday 4 June to 8pm Sunday 6 June

Will parking be available?

There will be a temporary loss of parking on the station side of Hill Street from 5pm Thursday 3 June, from Roseville Avenue to Victoria Street to allow the delivery of materials essential for the weekend work to be completed safely.

Parking on both sides of Hill Street will be unavailable between Roseville Avenue and Victoria Street and parking will be unavailable from 10pm Friday 4 June to 8pm Sunday 6 June.



ALTERNATIVE PARKING OPTIONS

- | | |
|---|--|
| Hill Street closed between Roseville Avenue and Victoria Street | Public car park (2 hour time limit) |
| Pedestrian Access (at all times) | Untimed Parking |
| | Timed Parking (until 12:30pm Saturday) |

Map of alternative parking options from 10pm Friday 4 June to 8pm Sunday 6 June

How has the community been informed about these changes?

The community will be informed about the changes through a range of measures, including:

- Community notification distributed to all properties within 500m of the station, as well as digitally to the project distribution list
- Signage including large, roadside variable messaging boards
- Businesses and directly affected residential properties provided with individual briefings
- Geo-targeted social media posts
- Dedicated project webpage with project information
- Public transport customers will receive trip alerts and temporary signage will be installed to advise information about the temporary bus stop relocations
- Traffic control and signage will be on site to assist pedestrians and motorists

How can I find out more?

We will continue to keep the community informed with regular project notifications and frequent online updates published to the project website www.transport.nsw.gov.au/roseville.

If you would like to be added to the project distribution list, or for more information on the Roseville Station Upgrade, please contact us on **1800 684 490** or email projects@transport.nsw.gov.au.

For all urgent enquiries or complaints regarding construction activities, please call our 24-hour Construction Response Line on **1800 775 465**.