



Transport Access Program

Roseville Station Upgrade

Project update

June 2021

Transport for NSW is upgrading Roseville Station to make it easier to access, especially for people with a disability or limited mobility, parents/carers with prams, and customers with luggage.

Upcoming work

Work will continue in June and includes:

- pouring concrete, forming and reinforcement work for the new lift on the Hill Street side of the station
- continuing refurbishment of the station building, including ventilation, air conditioning, plumbing work and constructing the new family accessible toilet
- constructing new pavement and tree beds, and installing bench seats and bike loops and fencing at the Pacific Highway entrance
- excavating the garden bed, landscaping and paving work along Hill Street
- concrete work on the station platforms.

Equipment to be used includes trucks, scaffolding, concrete truck and pump, tipper truck, excavator with breaker and hand tools.

Weekend work in June 2021

From **6pm on Friday 4 June to 5am on Monday 7 June**, work will take place continuously during a Sydney Trains trackwork weekend, when trains are not running.

Work will take place in the rail corridor, at the station, and on Hill Street, and includes:

- removing, sandblasting and re-painting the stairs on the station footbridge
- removing seven power poles and erecting two new power poles along Hill Street
- installing a new canopy on the lift shaft on the station platform
- electrical work on Hill Street and within the rail corridor
- electrical work inside the station building.

Equipment to be used includes trucks, cranes, elevated work platform, grinder, vacuum trucks, excavators, jack hammer, dump trucks, concrete vehicles, line pump, piling rig, lighting towers and hand tools.

Traffic control and signage will be in place to assist pedestrians and motorists around the work area when required. The work activities will be noisy at times. We apologise for the inconvenience and will minimise the impact by turning off vehicles and equipment when not in use, monitoring noise levels, using non-tonal reversing beepers and acoustic barriers. Lighting towers will be solar powered to further reduce noise.

For more information call **1800 684 490**,

Email projects@transport.nsw.gov.au or visit transport.nsw.gov.au/roseville

For urgent enquiries or complaints regarding construction activities, please call 24 hours **1800 775 465**.

Access changes during weekend work

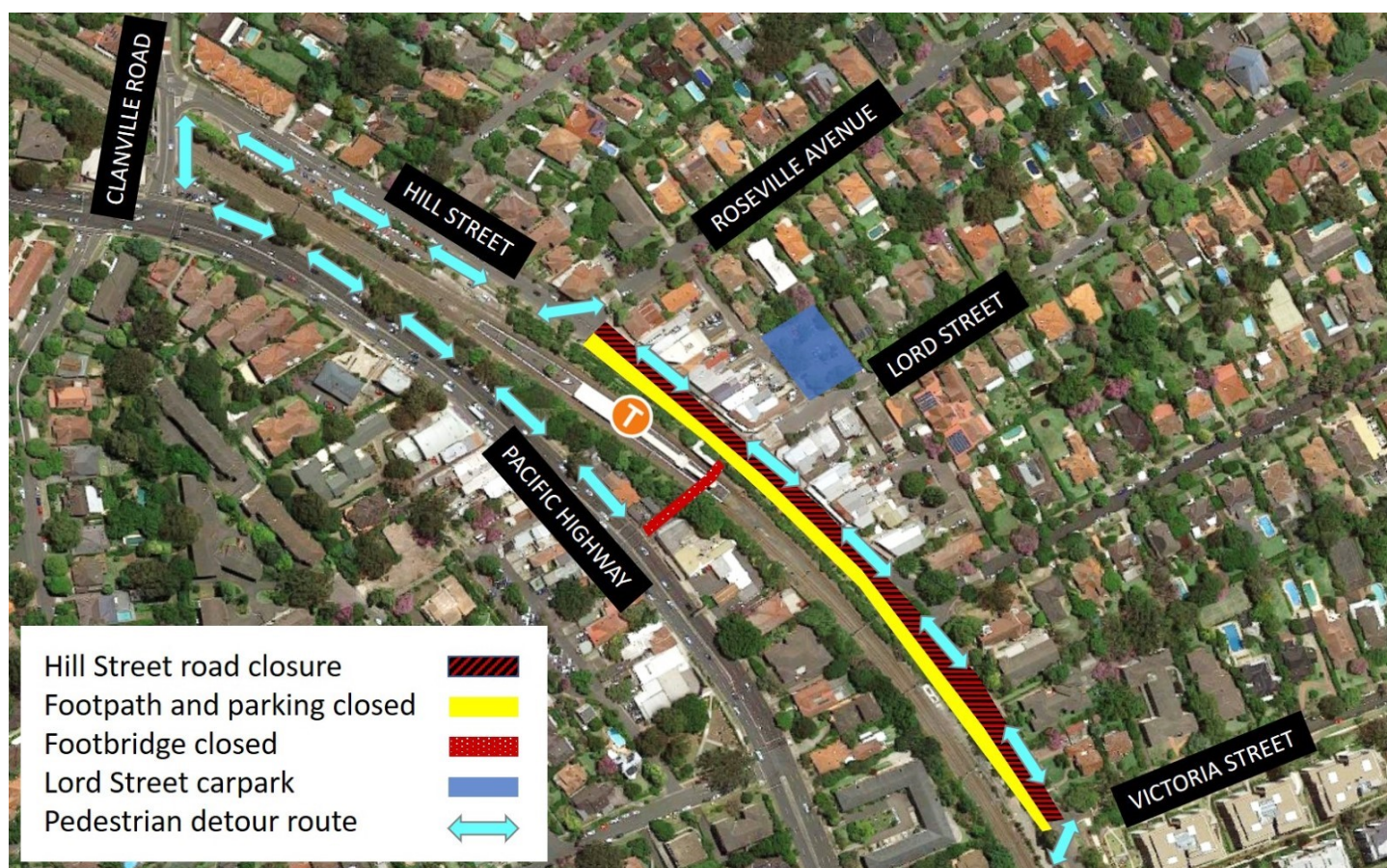
To carry out this work safely, temporary access changes will be in place throughout the weekend. Traffic controllers and signage will be in place to assist motorists and pedestrians.

Road closures and parking changes

- **Hill Street will be closed to traffic between Roseville Avenue and Victoria Street** and parking will be unavailable **from 10pm Friday 4 June to 8pm Sunday 6 June**. A detour will be in place for motorists via Roseville Avenue, Archbold Street and Victoria Street.
- Parking will be unavailable on the station side of Hill Street from 6pm Thursday 3 June to allow deliveries of machinery and equipment.
- **One lane southbound on the Pacific Highway** will be closed during the work. Please follow the signs and drive carefully through the area.
- The Lord Street car park will remain open. Access is available from Roseville Avenue.
- Access will be maintained for emergency vehicles at all times.

Pedestrian access changes

- The footbridge and station will be closed **from 10pm Friday 4 June to 5am Monday 7 June**. A pedestrian detour will be in place via Clanville Road.
- The footpath on the station side of Hill Street will be closed and pedestrians will need to use the footpath on the opposite side of the street. Signage will be in place to direct pedestrians.
- Pedestrian access to businesses on Hill Street will be maintained at all times.



Pedestrian access changes from 10pm Friday 4 June to 5am Monday 7 June

Bus stop closures and diversions

Due to the temporary closure of Hill Street, **bus route 558 Lindfield** will be diverted to avoid the area and four bus stops will be temporarily closed, as shown on the map overleaf. During this time, customers will need to use bus stops at **Archer Street** or **Gerald Avenue**. See map overleaf for the location of temporary bus stops, alternative bus routes and pedestrian detours to access bus stops.

Please visit www.transportnsw.info or call **131 500** for up to date information regarding service updates and replacement buses during this time. Rail Replacement bus stops will be located on the Pacific Highway in the usual location.



Bus stop closures and diversions from 10pm Friday 4 June to 5am Monday 7 June

Ongoing temporary pedestrian and parking changes

The footpath alongside the station side of Hill Street remains closed intermittently between Lord Street and Bancroft Avenue to allow for the safe and efficient construction of the new lift. A temporary pedestrian crossing has been installed near Bancroft Avenue to assist pedestrians to safely cross the road while footpath closures are in place. Closures will be in place until mid-2021.

Two parking spaces on each corner of the temporary pedestrian crossing on Hill Street remain unavailable until mid-2021 for the safety of pedestrians and motorists. Three parking spaces near the Hill Street station entrance remain temporarily closed until mid-2021 to allow for the safe and efficient construction of the new lift. During this time, the taxi zone and kiss and ride zone will be temporarily relocated to the other side of the station entry (opposite Roseville Pharmacy).

Night work in June

Pending approvals, from **10pm to 5am each night on Monday 21, Tuesday 22, Wednesday 23, and Thursday 24 June**, work will take place during a Sydney Trains shutdown, when trains are not running.

Work will take place in the rail corridor and at the station, and includes:

- removing scaffolding from the lift shafts
- installing glazing on the lift shafts

- installing canopy sheeting on the station platform

Equipment to be used includes trucks, cranes, elevated work platform, lighting towers and hand tools.

The pedestrian footbridge will remain open for customers. Traffic control and signage will be in place to assist pedestrians and motorists around the work area when required. The work activities will be noisy at times. We apologise for the inconvenience and will minimise the impact by turning off vehicles and equipment when not in use, monitoring noise levels, using non-tonal reversing beepers and acoustic barriers. Lighting towers will be solar powered to further reduce noise.

Construction hours

Standard construction hours are **7am to 6pm Monday to Friday** and **8am to 1pm on Saturdays**.

Keep in touch

We will continue to keep the community informed with regular project notifications and frequent online updates published to the project website www.transport.nsw.gov.au/roseville.

If you would like to be added to the project distribution list, or for more information on the Roseville Station Upgrade, please contact us on **1800 684 490** or email projects@transport.nsw.gov.au.

For all urgent enquiries or complaints regarding construction activities, please call our 24-hour Construction Response Line on **1800 775 465**.

Vietnamese

Tài liệu này có các thông tin quan trọng về các dự án giao thông công cộng trong khu vực của quý vị. Nếu quý vị cần sự giúp đỡ của thông dịch viên, xin vui lòng liên hệ với Dịch vụ Thông Phiên Dịch ở số điện thoại 131 450 và yêu cầu họ gọi cho Cơ quan Giao thông Tiểu bang NSW ở số điện thoại 1800 684 490. Sau đó thông dịch viên sẽ giúp thông dịch cho quý vị.

Korean

이 문서는 귀하의 해당 지역에 있는 대중교통 프로젝트에 관한 중요한 정보를 담고 있습니다. 통역사 서비스가 필요하시면 통번역서비스에 131 450 으로 연락하셔서 이들에게 NSW 대중교통 (Transport for NSW)에 1800 684 490 으로 연락하도록 요청하십시오. 그러면 통역사가 번역과 함께 귀하를 도와드릴 것입니다.

Simplified Chinese

这份文件包含你所在地区公共交通工程项目的重要信息。如果你需要传译服务，请致电翻译与传译服务机构，电话131 450，要求他们为你接通交通部(Transport for NSW)，电话是 1800 684 490。传译员会为你做翻译。

Traditional Chinese

這份文件包含你所在地區公共交通工程項目的重要信息。如果你需要傳譯服務，請致電翻譯與傳譯服務機構，電話 131 450，要求他們為你接通交通部 (Transport for NSW)，電話是 1800 684 490。傳譯員會為你做翻譯。



This document contains important information about public transport projects in your area. If you require the services of an interpreter, please contact the Translating and Interpreting Service on **131 450** and ask them to call Transport for NSW on **1800 684 490**. The interpreter will then assist you with translation.