

New Intercity Fleet

Stations and Signalling Modifications

Community Notification – Central Station

The NSW Government is delivering a New Intercity Fleet to replace trains carrying customers between Sydney and the Central Coast, Newcastle, the Blue Mountains and the South Coast.

The new trains feature:

- wider seats with arm rests, tray tables and high seat backs
- two-by-two seating for extra room and comfort
- improved accessibility including wheelchair access and accessible toilets
- improved customer information through digital information screens and announcements
- dedicated spaces for luggage, prams, bicycles and wheelchairs
- charging ports for mobile devices
- CCTV and help points
- modern heating and air conditioning

Project overview

Infrastructure modifications and upgrades are needed at various stations across the intercity network to support the introduction of the New Intercity Fleet, and allow for improved technology on the new trains.

Upcoming work

Monday 1 February to Sunday 7 February 2021

We will be working at **Central Station** from **6pm Monday 1 February** to **7am Sunday 7 February 2021**, weather permitting. Activities include excavation work for services investigation and modification, signalling work, and relocation of a train stop next to platform 2.

To ensure the safety of workers and the community, this work will take place overnight, and within a Sydney Trains trackwork period when trains aren't running.

Please contact Transport Info on **131 500** or visit **transportnsw.info** for information about replacement transport services.

Standard construction hours

Throughout February, some work may also occur during standard construction hours of **7am to 6pm Monday to Sunday**.

What you may notice

Equipment to be used includes powered hand tools.

Transport for NSW is committed to minimising disruption to the community. We will take every possible step to reduce noise such as turning off machinery when not in use and locating equipment as far away from residents and businesses as possible.

Revised construction hours due to COVID-19

Under amended laws introduced by the NSW Government to support the construction industry during the COVID-19 pandemic, some construction sites can operate on weekends and public holidays.

In accordance with the *Environmental Planning and Assessment (COVID-19 Development – Infrastructure Construction Work Days) Order 2020*, **standard construction hours** for these works are **7am to 6pm every day, including public holidays**.

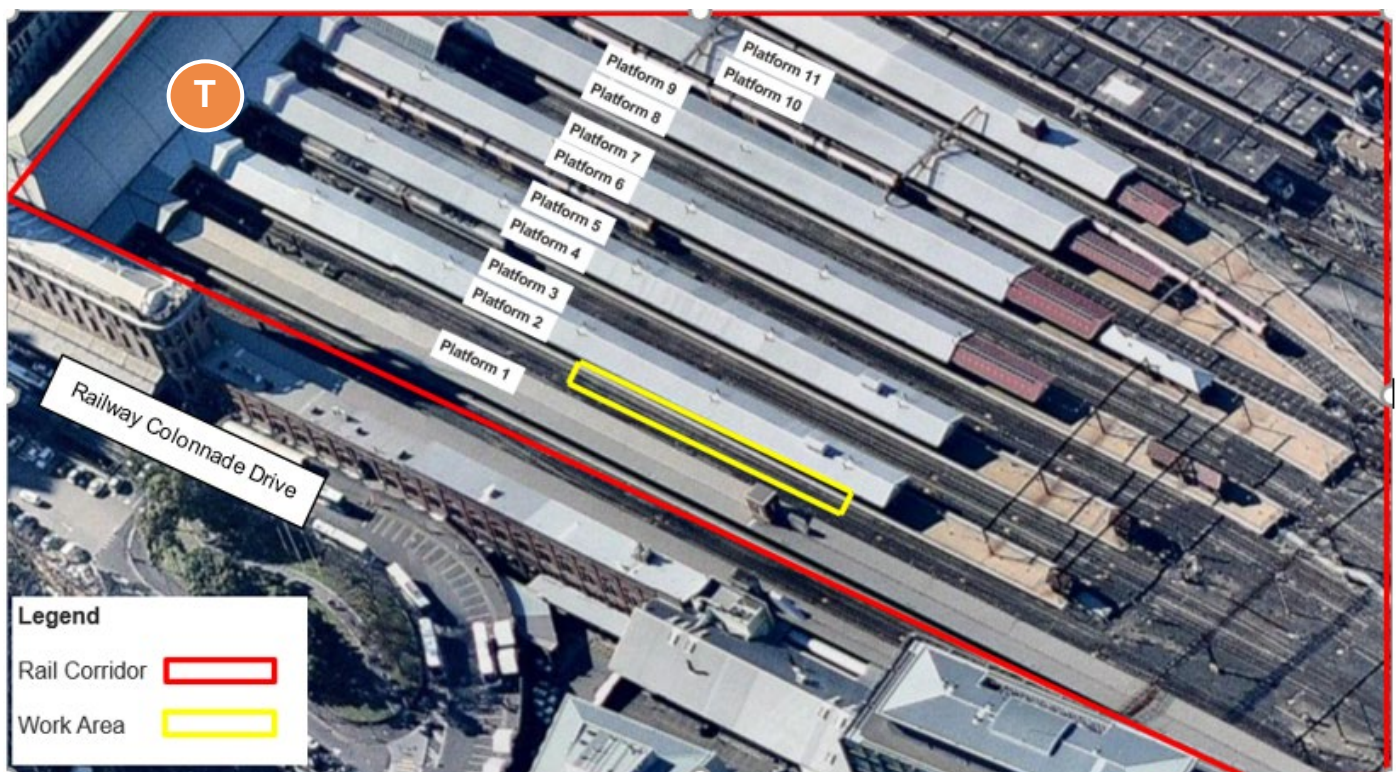
The *Environmental Planning and Assessment (COVID-19 Development – Infrastructure Construction Work Days) Order 2020* will continue until 25 March 2021 and all changes to the Order will be communicated accordingly. It enables workers to abide by social distancing rules while keeping construction projects progressing by allowing building work to be spread across more days of the week.

More information

If you have questions or concerns about this work, or would like more information about the New Intercity Fleet, please contact **1800 684 490**, email **projects@transport.nsw.gov.au** or visit **transport.nsw.gov.au/projects**.

For urgent enquiries or complaints about our construction activities, please contact our 24-hour construction response line on **1800 775 465**.

Map of work area



This document contains information about public transport projects in your area. If you require the services of an interpreter, please contact the Translating and Interpreting Service on **131 450** and ask them to call the Transport Projects Division on **(02) 9200 0200**. The interpreter will then assist you with translation.