

# Transport Access Program St Peters Station Upgrade Have your say



*Artist's impression of the proposed St Peters Station Upgrade, subject to detailed design*

## The NSW Government is improving accessibility at St Peters Station

Planning is currently underway to improve accessibility at the station. The community is invited to provide feedback on the Review of Environmental Factors (REF) from **Friday 12 March 2021 to Friday 26 March 2021**. Community feedback will help us understand what is important to customers and the community.

### Key features of the proposed upgrade include:

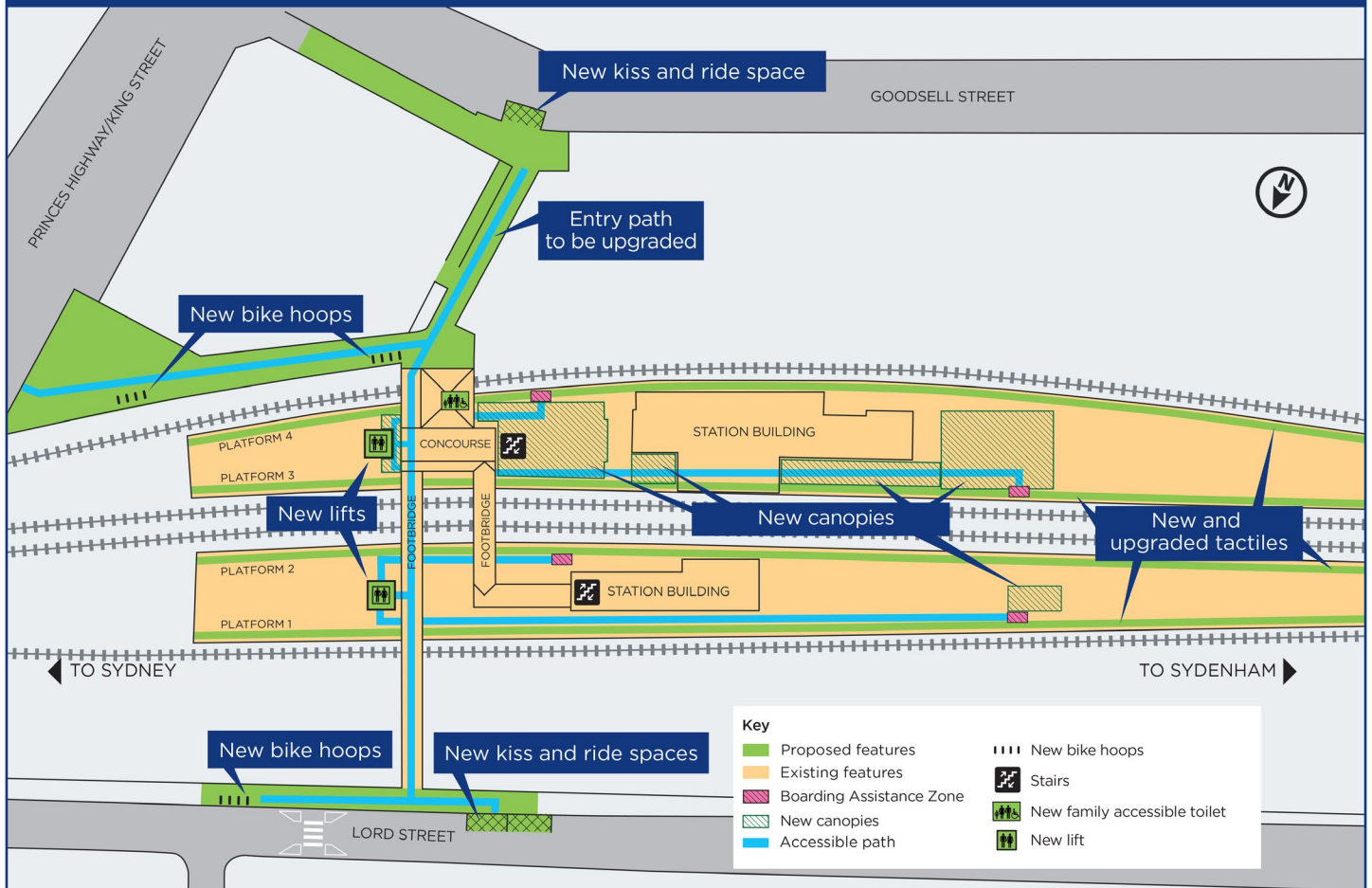
- Two new lifts to provide access to the station platforms
- New canopies at the station platforms, to provide better weather protection
- A new family accessible toilet
- Upgrades to pedestrian pathways throughout the station precinct
- New kiss and ride spaces
- New and upgraded platform tactiles, to help customers with visual impairment
- New bicycle hoops
- Improvements to CCTV, lighting and wayfinding signage.

Subject to planning approval, construction is expected to commence in late 2021 and take up to 18 months to complete.

For more information call 1800 684 490

Email [projects@transport.nsw.gov.au](mailto:projects@transport.nsw.gov.au) or visit [transport.nsw.gov.au/stpeters](https://transport.nsw.gov.au/stpeters)

## Proposed Key Features of the St Peters Station Upgrade



Key features of the proposal, subject to detailed design

### Have your say

The Review of Environmental Factors (REF) is on public display until **Friday 26 March 2021**, and the community feedback is invited during this time. To view the REF, please scan the QR code or visit [transport.nsw.gov.au/stpeters](https://transport.nsw.gov.au/stpeters)

Feedback can be submitted by:

- Emailing [projects@transport.nsw.gov.au](mailto:projects@transport.nsw.gov.au)
- Completing the feedback form at [yoursay.transport.nsw.gov.au/st-peters-station-upgrade](https://yoursay.transport.nsw.gov.au/st-peters-station-upgrade)



#### • Mailing

##### Transport Access Program

##### St Peters Station Upgrade

Associate Director Environmental Impact Assessment  
Transport for NSW  
PO Box K659 Haymarket NSW 1240

Your feedback will help Transport for NSW understand what is important to customers and the community.

### Transport Access Program

This project is being delivered as part of the Transport Access Program, a NSW Government initiative to provide a better experience for public transport customers by delivering accessible, modern, secure and integrated transport infrastructure. As part of this program, the St Peters Station upgrade would aim to provide a station precinct that is accessible to those with a disability, limited mobility, parents/carers with prams and customers with luggage.

## Next steps

Transport for NSW develops initial concept design options for the project, including identification and consideration of environments constraints, risks and opportunities.



**We are  
here**

Transport for NSW prepares a Review of Environmental Factors (REF) for public display and invites submissions.



Transport for NSW assess and responds to feedback and prepares a submission report/determination report with proposed conditions to minimise environmental impacts.



Transport for NSW determines the Proposal.  
*Conditions of Approval made available on Transport for NSW website.*



Construction commences subject to compliance with conditions.

### COVID-19 social distancing measures

Under normal circumstances Transport for NSW would hold community information sessions at the station.

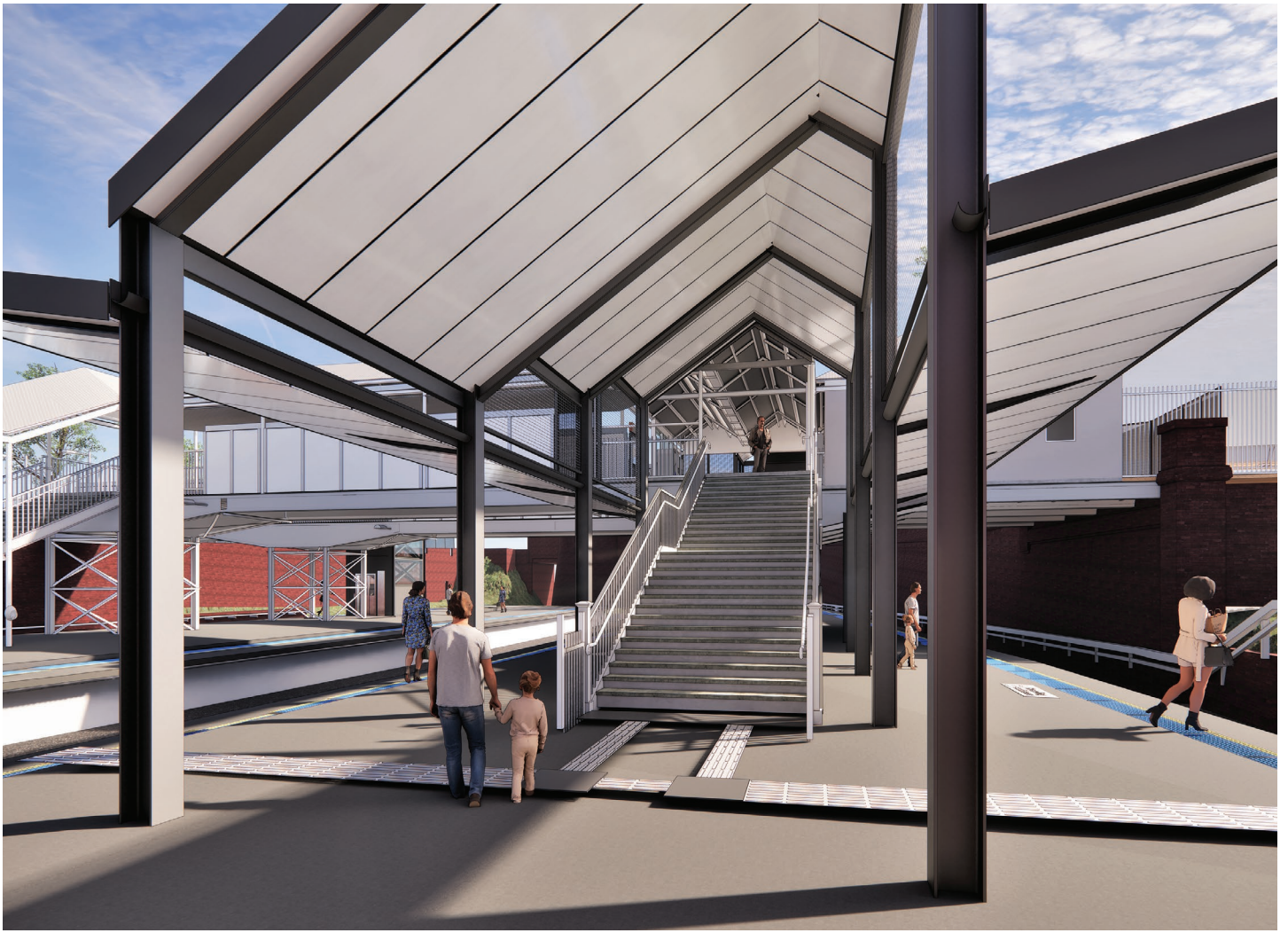
Due to COVID-19 social distancing measures we are available by phone and email and look forward to hearing your questions and feedback that way.

If you have any questions, please call the Project Infoline on **1800 684 490** or email [projects@transport.nsw.gov.au](mailto:projects@transport.nsw.gov.au)

### Review of Environmental Factors

The Review of Environmental Factors (REF) is a planning document outlining the proposed work, potential impacts and mitigation measures.

The document includes comprehensive assessments on the existing environment and potential impacts of the project on the following areas including traffic and transport, biodiversity, heritage, noise and vibration and visual impacts.



*Artist impression of the proposed St Peters Station Upgrade, subject to detailed design*



This document contains important information about public transport projects in your area. If you require the services of an interpreter, please contact the Translating and Interpreting Service on **131 450** and ask them to call Transport for NSW on **1800 684 490**. The interpreter will then assist you with translation.

### Chinese

這份文件包含你所在地區公共交通工程項目的重要信息。如果你需要傳譯服務，請致電翻譯與傳譯服務機構，電話 131 450，要求他們為你接通交通工程部(Transport for NSW)，電話是 1800 684 490。傳譯員會為你做翻譯。

### Vietnamese

Tài liệu này có các thông tin quan trọng về các dự án giao thông công cộng trong khu vực của quý vị. Nếu quý vị cần sự giúp đỡ của thông dịch viên, xin vui lòng liên hệ với Dịch vụ Thông Phiên Dịch ở số điện thoại 131 450 và yêu cầu họ gọi cho Cơ quan Giao thông Tiểu bang NSW ở số điện thoại 1800 684 490. Sau đó thông dịch viên sẽ giúp thông dịch cho quý vị.

For more information call **1800 684 490**  
Email [projects@transport.nsw.gov.au](mailto:projects@transport.nsw.gov.au) or visit [transport.nsw.gov.au/stpeters](http://transport.nsw.gov.au/stpeters)

