

# Transport Access Program St Peters Station Upgrade Planning approval received

## Planning approval has been granted for the St Peters Station Upgrade

Detailed design is now underway, with major construction expected to commence later this year.

St Peters customers are set to benefit with an upgraded station that is accessible to all, following planning approval. Transport for NSW would like to thank the community for their feedback. We received 79 submissions from the community during the public display of the Review of Environmental Factors (REF) between 12 March and 26 March 2021.

All submissions received were considered as part of the planning process and have been addressed in the Determination Report.

### Key features of the proposed upgrade include:

- Two new lifts to provide access to station platforms
- New facilities, including a new family accessible toilet, new bicycle hoops and new and upgraded platform tactiles to help customers with visual impairment
- New Kiss and Ride spaces
- New canopies at the station platforms, to provide better weather protection
- Improvements to CCTV, lighting and way finding signage, and upgrades to pedestrian pathways throughout the station precinct

### What we heard

Feedback received during the public display period showed that the community supported improving accessibility at St Peters Station.

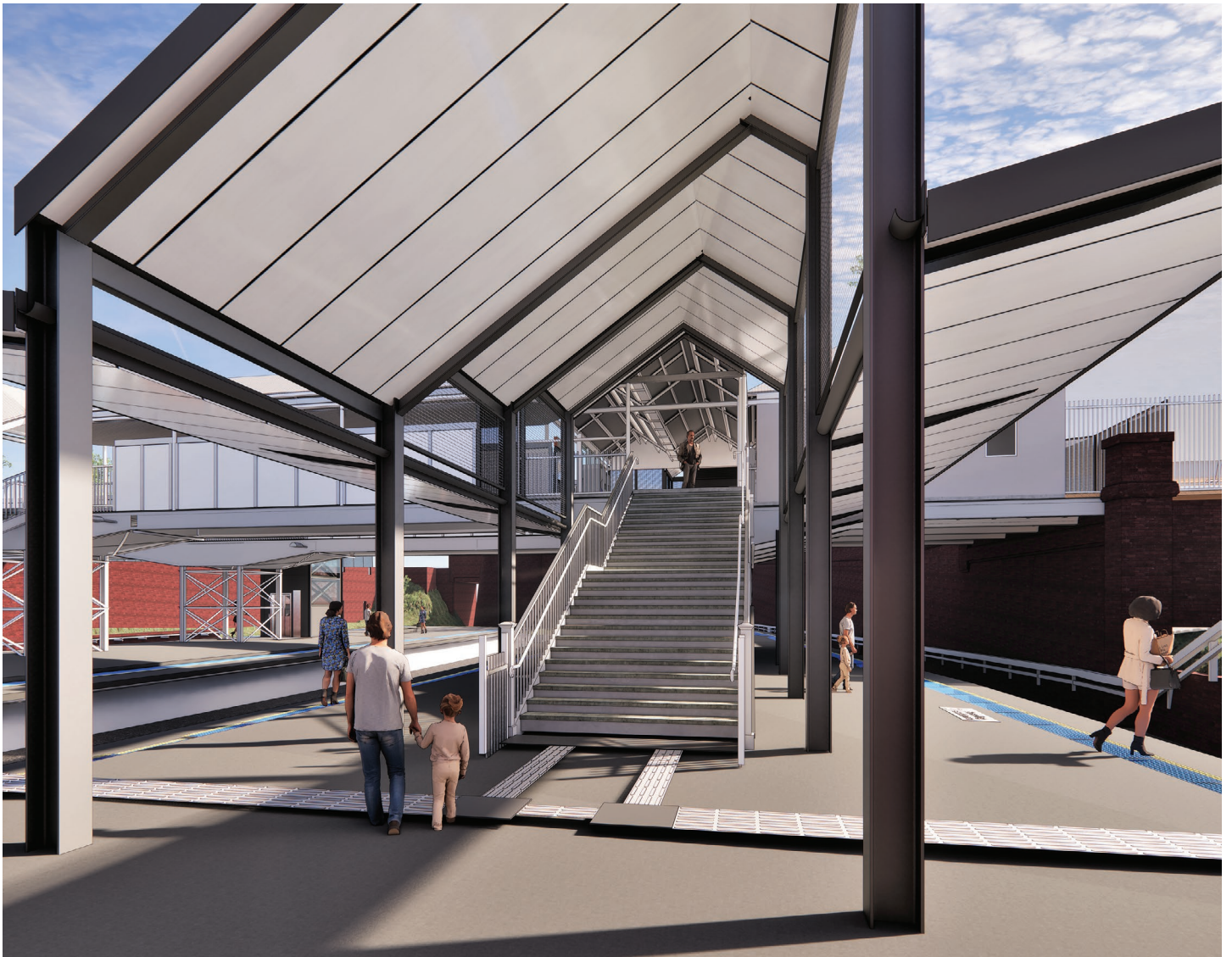
Other key themes that were identified in the feedback include the importance of heritage and cultural values in design principles, request more connectivity at and around St Peters Station, additional canopies and more landscaping in the surrounding areas. These themes have been responded to in the Determination Report, and would be taken into consideration during detailed design.



*Artist's impression of the proposed St Peters Station Upgrade, subject to detailed design*

### Next Steps

Detailed design is now underway, with major construction expected to commence mid-2021. We will keep the community up to date as more information about the project becomes available.



*Artist's impression of the proposed St Peters Station Upgrade, subject to detailed design*

## Transport Access Program

St Peters Station Upgrade is being delivered as part of the Transport Access Program, a NSW Government initiative to provide a better experience for public transport customers by delivering accessible, modern, secure and integrated transport infrastructure across the state. As part of the program, the St Peters Station Upgrade will provide a station that is accessible to those with a disability, limited mobility, parents/carers with prams and customers with luggage.

### Like to know more

To view the Determination Report and associated Conditions of Approval and stay up to date with the project, visit [transport.nsw.gov.au/stpeters](https://transport.nsw.gov.au/stpeters) or scan the QR code



### Contact us

If you would like to speak with the project team please call **1800 684 490** or email us at [projects@transport.nsw.gov.au](mailto:projects@transport.nsw.gov.au)



This document contains important information about public transport projects in your area. If you require the services of an interpreter, please contact the Translating and Interpreting Service on **131 450** and ask them to call Transport for NSW on **1800 684 490**. The interpreter will then assist you with translation.

For more information call **1800 684 490**

Email [projects@transport.nsw.gov.au](mailto:projects@transport.nsw.gov.au) or visit [transport.nsw.gov.au/stpeters](https://transport.nsw.gov.au/stpeters)

