



September 2021

Transport Access Program

Thornleigh Station Upgrade

Out of Hours Work

Saturday 2 October to Wednesday 6 October

October out of hours work

Our four night, five day out of hours work will commence from;

- **1 am on Saturday 2 October and end at 6pm on Monday 4 October and**
- **re-commence from 7am on Tuesday 5 October and end at 5am on Wednesday 6 October.**

Our work will include excavating and piling foundations within the rail corridor. During this period, we will be installing temporary timber hoarding on the platforms and removing additional vegetation.

The work may be noisy at times and every effort has been made to carry out our high noise activities by 10pm each evening.

We apologise for any inconvenience this may cause.

Covid-19 Safe Practice

This work is in line with the current Public Health Orders and a COVID-19 Safe plan is in place, including masks and QR codes.

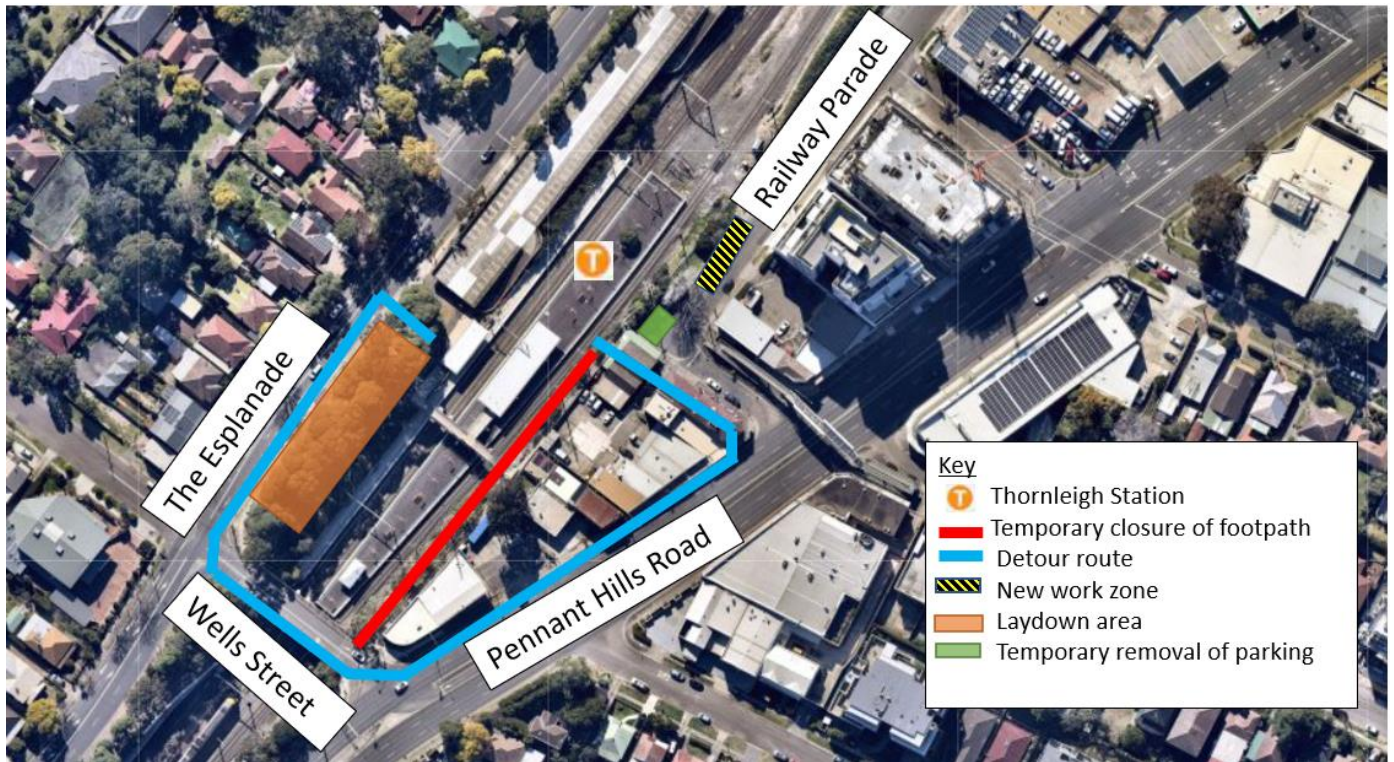
How will this work effect you?

Equipment that will be used throughout this stage of the work includes; excavators, piling machinery, vaccum trucks, road saws, tipper trucks, concrete trucks and pumps, dump trucks, chainsaws, chippers, lighting towers, various power tools.

Where possible, measures will be implemented to reduce noise and dust associated with this work, including adding shade cloth mesh to fencing, using noise blankets, turning off vehicles and equipment when not in use and using non-tonal reversing beepers.

Studying for the HSC?

Is there someone in your household studying for the HSC? Please contact us if you have any questions or concerns



Contact Us

For more information or to subscribe to project updates:



Project information line: **1800 684 490**



24/7 construction response line: **1800 775 465**



projects@transport.nsw.gov.au



www.transport.nsw.gov.au/Thornleigh



If you require the services of an interpreter, please contact the Translating and Interpreting Service on **131 450** and ask them to contact Transport for NSW on **1800 684 490**.