



# Transport Access Program

## Thornleigh Station Upgrade

### COMMUNITY NOTIFICATION

AUGUST 2021

The Thornleigh Station Upgrade is part of the Transport Access Program, a NSW Government initiative to provide a station that is accessible to people with a disability, limited mobility, parents/carers with prams and customers with luggage.

#### Pause on construction

In line with recent restrictions introduced by the NSW Government on 17 July 2021 to help keep our communities safe construction activities on Thornleigh Station Upgrade were paused until Friday 30 July. We have made arrangements for our work activities to safely recommence from 2 August 2021. Should these restriction change based on advice by the NSW Government, which may impact the timing of our work, the community will be notified.

**We encourage you to subscribe to our project email distribution for the latest information, by calling us on 1800 684 490 or emailing [projects@transport.nsw.gov.au](mailto:projects@transport.nsw.gov.au)**

The safety and wellbeing of our workplace and the wider community is our highest priority. You may see some of our workers on site as they prepare the sites for work to recommence. Please be assured our people and worksites follow NSW Health's COVID-19 requirements and will continue to do so.

#### Upcoming work

Throughout August, from Monday 2 August to Tuesday 31 August (weekdays only), we will be working within and around Thornleigh Station to undertake the following activities. These activities will be carried out between standard construction hours of 7am and 6pm:

- Site preparation work including installing hoarding around our work zones
- Investigating underground services and surveying work
- Installing tree protection measures
- Concrete cutting of pile locations
- Excavating and piling work in preparation for the new lifts
- Installing new safety measures along the footpath between Wells Street and the station footbridge
- Vegetation trimming.

#### What to expect

Plant and machinery will access the site via the rail access gate on Railway Parade and Phyllis Avenue, Thornleigh. A laydown area will be in place at the end of platforms 1 and 2 for plant and materials.

Throughout the month of August, there will be some staged temporary footpath closures in place to allow for work to be carried out. Traffic control and signage will be in place to provide directions to pedestrians and cyclists around the work site. Access to and from the station will be maintained – please allow extra travel time during this work.

**For pedestrian diversions and timing, please see map overleaf for further details.**

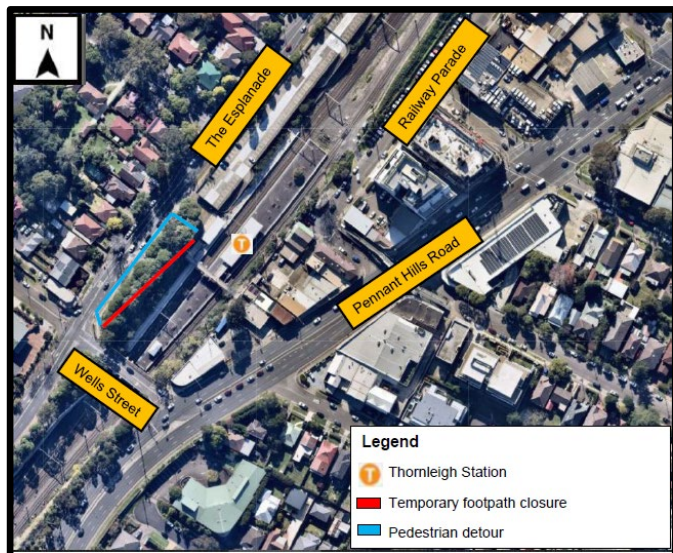
For more information call **1800 684 490**

Email [projects@transport.nsw.gov.au](mailto:projects@transport.nsw.gov.au) or visit [transport.nsw.gov.au/thornleigh](https://transport.nsw.gov.au/thornleigh)

For urgent enquiries or complaints regarding construction activities, please call 24 hours **1800 775 465**

### Stage 1: The Esplanade temporary footpath closure – 2 August to end August 2021

The footpath adjacent to Platform 3 between Wells Street and the station kiosk will be temporarily closed from 7am Monday 2 August to approximately end of August 2021. This is to allow for piling and excavation work to take place. Tree protection measures will continue to be in place while this work is carried out. **Access to the station remains open during this time.**



Map of Stage 1

### Stage 2: Benowie Walkway temporary footpath closure – 9 August to end August 2021

A temporary **full footpath closure** will be in place on the east side of the station between Railway Parade and Wells Street throughout August. This is to allow for piling activities for the new lift to be carried out. **Access to and from the station will be via The Esplanade only.**



Map of Stage 2

For more information call **1800 684 490**

Email [projects@transport.nsw.gov.au](mailto:projects@transport.nsw.gov.au) or visit [transport.nsw.gov.au/thornleigh](https://transport.nsw.gov.au/thornleigh)

For urgent enquiries or complaints regarding construction activities, please call 24 hours **1800 775 465**

### Stage 3: Benowie Walkway partial temporary footpath closure – September to April 2022

A long-term temporary footpath closure between Railway Parade and the station footbridge will be closed to approximately April 2022 allow for the excavation and piling of the new lift to take place.

During this period, access to and from Thornleigh Station will be along Pennant Hills Road and via the footpath from Wells Street. Please allow extra time to access the station from Railway Parade.



Map of Stage 3

### Construction Equipment

Equipment that will be used includes a piling rig, excavators, concrete trucks, concrete pump, a vacuum truck, concrete saw, hi-rail crane trucks, trucks, bobcat, lighting towers, chain saw, and various hand and powered hand tools.

Where possible, measures will be implemented to reduce noise associated with this work, including turning off vehicles and equipment when not in use and using non-tonal reversing beepers.

We apologise for any inconvenience and thank you for your patience during this important work.

### Keep in touch

We will continue to keep you informed with regular project notifications and online updates published to the project website [transport.nsw.gov.au/thornleigh](https://transport.nsw.gov.au/thornleigh)

If you would like to be added to the project distribution list or for more information on the Thornleigh Station Upgrade, please contact us on **1800 684 490** or email [projects@transport.nsw.gov.au](mailto:projects@transport.nsw.gov.au).

For all urgent enquiries or complaints regarding construction activities, please call our 24-hour Construction Response Line on **1800 775 465**.



This document contains important information about public transport projects in your area. If you require the services of an interpreter, please contact the Translating and Interpreting Service on **131 450** and ask them to call Transport for NSW on **(02) 9200 0200**. The interpreter will then assist you with translation.

For more information call **1800 684 490**

Email [projects@transport.nsw.gov.au](mailto:projects@transport.nsw.gov.au) or visit [transport.nsw.gov.au/thornleigh](https://transport.nsw.gov.au/thornleigh)

For urgent enquiries or complaints regarding construction activities, please call 24 hours **1800 775 465**