



Transport Access Program

Thornleigh Station Upgrade

COMMUNITY NOTIFICATION

MARCH 2021

The Thornleigh Station Upgrade is part of the Transport Access Program, a NSW Government initiative to provide a station that is accessible to people with a disability, limited mobility, parents/carers with prams and customers with luggage.

Survey and site investigations

To help inform the concept design for the proposed Thornleigh Station Upgrade, survey and site investigations are required to take place at station. The investigations will be undertaken from:

- **7am until 6pm Monday 22 March to Wednesday 24 March**
- **8pm Tuesday 23 March to 2am Wednesday 24 March 2021**

Plant and machinery will access the site via the rail access gate on Railway Parade, Thornleigh.

Temporary footpath closure – Thornleigh Station

From 8pm Tuesday 23 March to 2am Wednesday 24 March a temporary footpath closure will be in place between Railway Parade and the station footbridge while site investigations are carried out (please refer to map overleaf).

During these hours, access to and from Thornleigh Station will be via Pennant Hills Road and the walkway on Wells Street or The Esplanade. Please allow extra travel time to access the station from Railway Parade. Traffic control and detour signs will be in place to provide directions to pedestrians around the work site.

Construction Equipment

Equipment used will include an excavator, auger, small drilling rig, surveying equipment, a delivery truck, a vacuum truck, road saw, and powered hand tools.

Where possible, measures will be implemented to reduce noise associated with this work, including turning off vehicles and equipment when not in use and using non-tonal reversing beepers.

We apologise for any inconvenience and thank you for your patience during this important work.

Keep in touch

We will continue to keep you informed with regular project notifications and online updates published to the project website transport.nsw.gov.au/thornleigh

For more information call **1800 684 490**

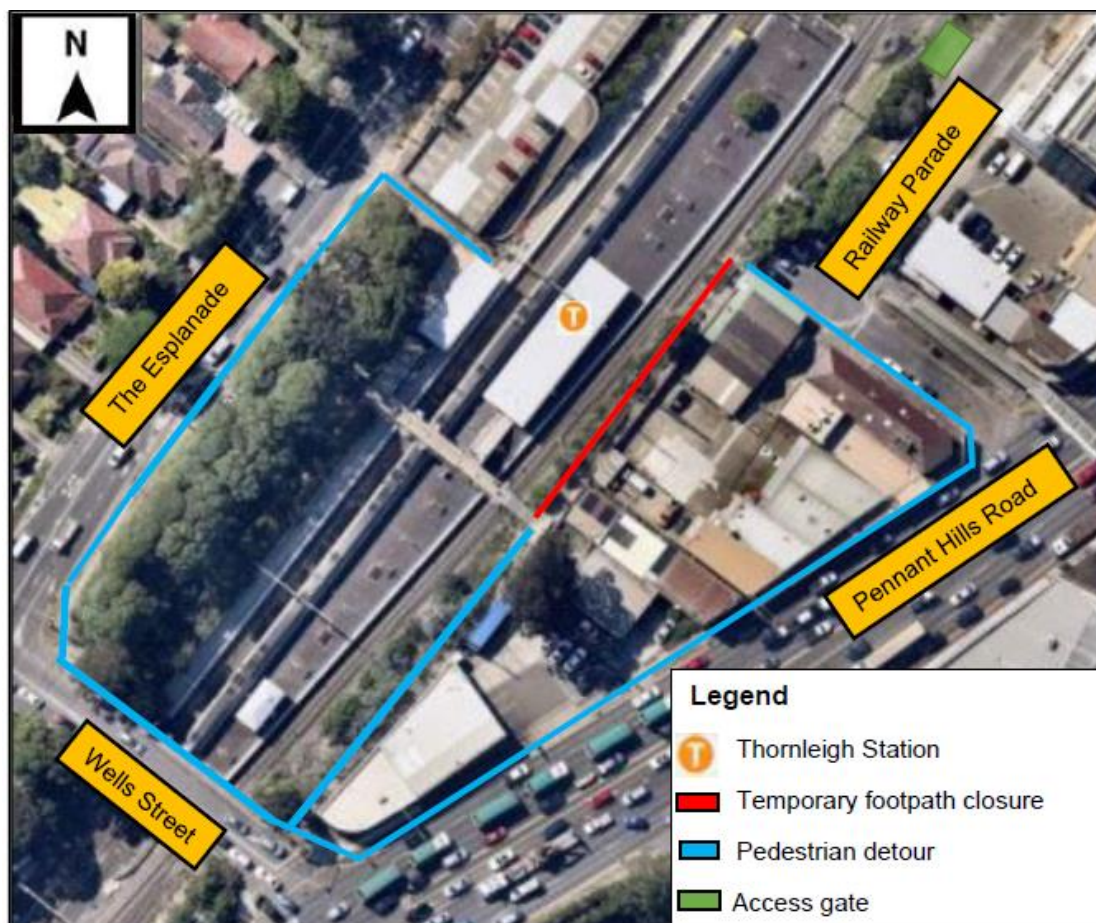
Email projects@transport.nsw.gov.au or visit transport.nsw.gov.au/thornleigh

For urgent enquiries or complaints regarding construction activities, please call 24 hours **1800 775 465**

If you would like to be added to the project distribution list or for more information on the Thornleigh Station Upgrade, please contact us on **1800 684 490** or email projects@transport.nsw.gov.au.

For all urgent enquiries or complaints regarding construction activities, please call our 24-hour Construction Response Line on **1800 775 465**.

Map of work area



This document contains important information about public transport projects in your area. If you require the services of an interpreter, please contact the Translating and Interpreting Service on **131 450** and ask them to call Transport for NSW on **(02) 9200 0200**. The interpreter will then assist you with translation.

Chinese (Simplified)

这份文件包含你所在地区公共交通工程项目的重要信息。如果你需要传译服务，请致电翻译与传译服务机构，电话131 450，要求他们为你接通交通工程部(Transport for NSW)，电话是 (02) 9200 0200。传译员会为你做翻译。

For more information call **1800 684 490**

Email projects@transport.nsw.gov.au or visit transport.nsw.gov.au/thornleigh

For urgent enquiries or complaints regarding construction activities, please call 24 hours **1800 775 465**