

Transport Access Program

Lisarow Station Upgrade

Project update

May 2021



Construction on the Lisarow Station Upgrade is progressing well with the lift shaft piling completed and investigation and underground services relocation activities underway during April.

Upcoming work

Work will continue in May and includes:

- utility investigations and site surveying work
- construction of the concrete lift bases
- installation of concrete and steel lift shaft components
- piling for the Boarding Assistance Zone canopy
- construction of new Pacific Highway Station entrance.

Equipment to be used includes surveying equipment, small drilling rigs, vacuum trucks, mini loaders, excavators, cranes, light vehicles and hand tools.

Weekend work – 1 to 2, 8 to 9 and 15 to 16 May 2021

Weekend work will take place from **7pm Saturday to 5am Sunday** during the first, second and third weekend of May. Construction activities will include the installation of tactile on station platforms, repositioning of concrete barriers and installation of a new temporary station access ramp.

Equipment to be used includes cranes, trucks and light vehicles, portable drilling machine and hand tools.

Weekend work - 29 to 30 May 2021

Weekend work will take place from **5am Saturday 29 May to 10pm Sunday 30 May 2021**. Construction activities will include lift installation work and delivery of plant and equipment from the Pacific Highway.

Equipment to be used includes elevated working platforms, cranes, semi-trailers, scaffolding, pumps and hand tools.

Wherever possible, measures to reduce noise will be implemented including turning equipment off when not in use, positioning equipment as far away from residences as possible, monitoring noise, using non-tonal reversing beepers and stopping work for respite periods.

Temporary access changes and bus stop relocation

From **Monday 3 May 2021** the following access changes will be in place on the Pacific Highway side of the station entrance:

- the existing access to Lisarow Station from the Pacific Highway **will be temporarily closed** for up to 3 months. A new temporary ramp will be installed to access Platform 1 during this time.
- the bus stop will be relocated up to 80 metres toward the local shopping centre.



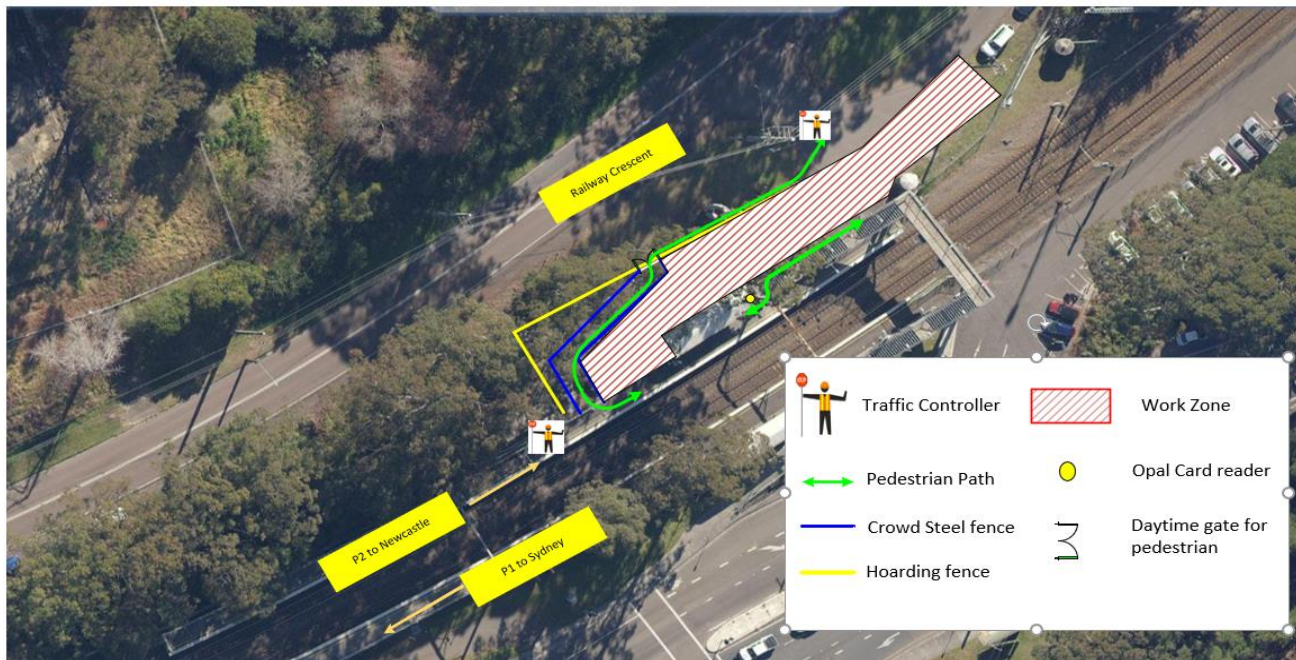
Map of the Pacific Highway access changes at Lisarow Station

For more information call **1800 684 490**.

Email projects@transport.nsw.gov.au or visit transport.nsw.gov.au/lisarow

For urgent enquiries or complaints regarding construction activities, please call 24 hours **1800 775 465**

From **Monday 17 May to Friday 21 May 2021** a temporary access ramp from Railway Crescent will be installed at the station. Traffic control and signage will be in place to assist pedestrians accessing the station.



Map of the Railway Crescent access changes at Lisarow Station

Temporary parking impacts

The Pacific Highway commuter car park **will be temporarily closed from 5am Saturday 29 May to 10pm Sunday 30 May 2021.**

Please allow extra travel time and follow the directions of traffic controllers and signage in place.

Construction hours

Standard construction hours are now **7am to 6pm every day**. This is to facilitate social distancing on construction sites and support the health and wellbeing of workers.

For the safety of staff, customers and the community, some work will be completed outside standard construction hours. We will notify nearby residents and businesses in advance if we need to work outside these times.

Keeping the community informed

Transport for NSW is committed to keeping the community informed throughout the delivery of the project. You can stay informed via regular updates to the project website transport.nsw.gov.au/lisarow.

For further information on the project or to receive project updates via email, please call the Project Infoline on **1800 684 490** or email projects@transport.nsw.gov.au. For all urgent enquiries or complaints regarding construction activities, please call our 24-hour Construction Response Line on **1800 775 465**.



This document contains important information about public transport projects in your area. If you require the services of an interpreter, please contact the Translating and Interpreting Service on **131 450** and ask them to call Transport for NSW on **1800 684 490**. The interpreter will then assist you with translation.