

Transport Access Program

Lisarow Station Upgrade

Project update

October 2021



Upcoming work

Construction activities in October include:

- construction of the new ramp for the Pacific Highway station entrance
- resurfacing and drainage work to the Pacific Highway carpark
- resurfacing and drainage work to the Railway Crescent carpark
- resurfacing to the Platform 1 waiting area
- electrical and communication works
- constructing the lift cars
- line marking and service installation work
- upgrades to the balustrade and handrails on the pedestrian footbridge.

Equipment to be used includes surveying equipment, small drilling rigs, vacuum trucks, excavators, cranes, light vehicles and hand tools.

For more information call 1800 684 490.

Email projects@transport.nsw.gov.au or visit www.transport.nsw.gov.au/lisarow

For urgent enquiries or complaints regarding construction activities, please call 24 hours 1800 775 465

Temporary access changes and bus stop relocation

The following access changes are in place on the **Pacific Highway** side of the station entrance:

- the existing access to Lisarow Station from the Pacific Highway **is temporarily closed** until mid October 2021. A new temporary ramp has been installed to access Platform 1 during this time.
- the bus stop has been relocated along the newly opened section of the Pacific Highway near The Ridgeway intersection
- vehicle entrance to the Pacific Highway Commuter Car Park is temporarily relocated around 20 metres north of the current entrance.
- the existing entrance to the commuter car park for pedestrians is temporarily closed. Access to the car park is via a temporary walkway along the Pacific Highway.
- In early October the Railway Crescent Platform 2 access will change during car park regrading work.

Please see map overleaf for station layout during these times. Traffic controllers and signage will be in place to assist customers accessing Lisarow Station.

Temporary parking impacts

Up to six parking spaces will be removed in the Pacific Highway Commuter Car Park. This is to create a new entrance to the car park as the existing entrance will be closed for an accessibility upgrade.

Please allow extra travel time and follow the directions of traffic controllers and signage in place.

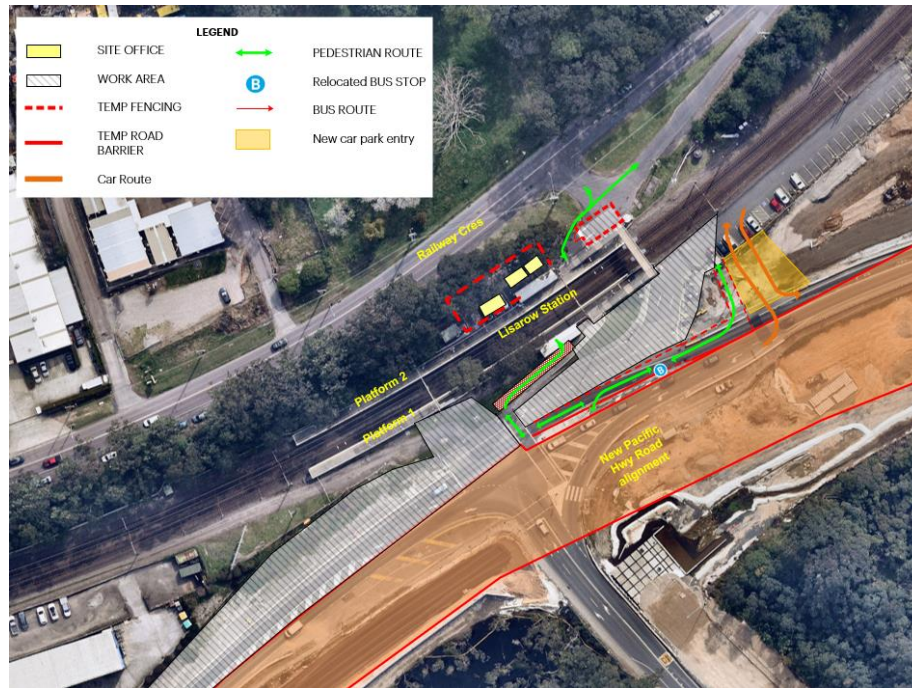
Construction hours

Construction for the Lisarow Station upgrade is now in its final stages and expected to be completed by the end of October. The majority of construction work is expected to be complete in late October.

Standard construction hours are now between **7am and 6pm every day**. This is to facilitate social distancing on construction sites and support the health and wellbeing of workers. For the safety of staff, customers and the community, some work will be completed outside standard construction hours. We will notify nearby residents and businesses in advance if we need to work outside these times.

Our crews will comply with all NSW Health COVID regulations while they carry out these works, with traffic control on site for driver and pedestrian safety. We encourage you to subscribe to our project email distribution for the latest information, by calling us on 1800 684 490 or emailing projects@transport.nsw.gov.au.

Map of access changes at Lisarow Station



Keeping the community informed

Transport for NSW is committed to keeping the community informed throughout the delivery of the project. You can stay informed via regular updates to the project website www.transport.nsw.gov.au/lisarow.

For further information on the project or to receive project updates via email, please call the Project Infoline on **1800 684 490** or email projects@transport.nsw.gov.au. For all urgent enquiries or complaints regarding construction activities, please call our 24-hour Construction Response Line on **1800 775 465**.



This document contains important information about public transport projects in your area. If you require the services of an interpreter, please contact the Translating and Interpreting Service on **131 450** and ask them to call Transport for NSW on **1800 684 490**. The interpreter will then assist you with translation.

For more information call **1800 684 490**.
Email projects@transport.nsw.gov.au or visit www.transport.nsw.gov.au/lisarow
For urgent enquiries or complaints regarding construction activities, please call 24 hours **1800 775 465**