

Transport Access Program

Lisarow Station Upgrade

Project update

April 2021



Construction on the Lisarow Station Upgrade is progressing well with investigation and underground services relocation activities underway during March.

Upcoming work

Work will continue in April and includes:

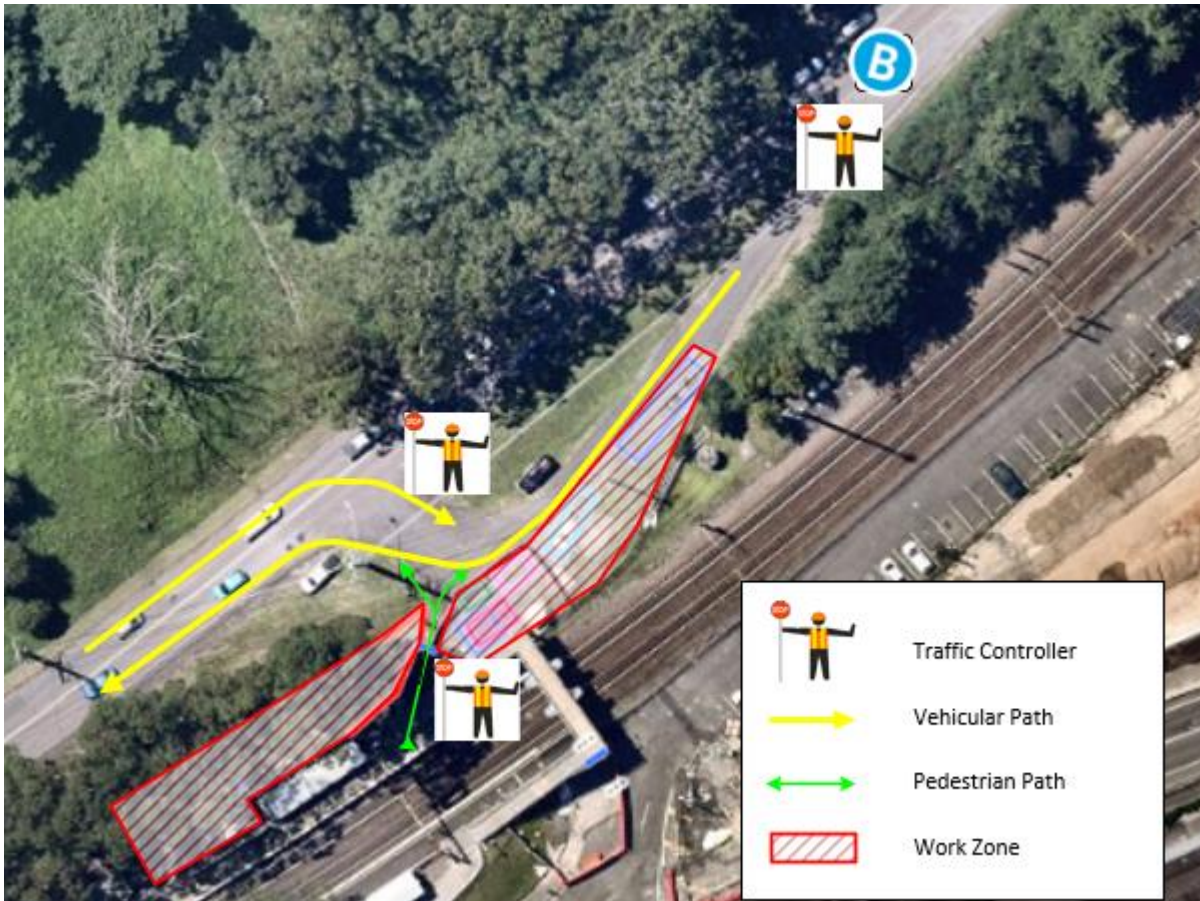
- utility investigations and site surveying work
- relocation of underground and aerial services
- piling for the lift shafts and construction of the concrete lift bases
- installation of concrete and steel lift shaft components
- piling for the Boarding Assistance Zone canopy.

Equipment to be used includes surveying equipment, small drilling rigs, vacuum trucks, mini loaders, excavators, cranes, light vehicles and hand tools.

Temporary access changes – 1 April to 16 April

From **Thursday 1 April to Friday 16 April 2021** traffic control will be in place to assist pedestrians accessing to the station from Railway Crescent during the installation of lift components. This is to ensure the safety of customers and workers during this time. Please see the map below.

Map of access changes



Construction hours

Standard construction hours are **7am to 6pm Monday to Friday** and **8am to 1pm on Saturdays**.

For the safety of staff, customers and the community, some work will be completed outside standard construction hours. We will notify nearby residents and businesses in advance if we need to work outside these times.

Keeping the community informed

Transport for NSW is committed to keeping the community informed throughout the delivery of the project. You can stay informed via regular updates to the project website transport.nsw.gov.au/lisarow.

For further information on the project or to receive project updates via email, please call the Project Infoline on **1800 684 490** or email projects@transport.nsw.gov.au. For all urgent enquiries or complaints regarding construction activities, please call our 24-hour Construction Response Line on **1800 775 465**.

For more information call **1800 684 490**.

Email projects@transport.nsw.gov.au or visit transport.nsw.gov.au/lisarow

For urgent enquiries or complaints regarding construction activities, please call 24 hours **1800 775 465**



This document contains important information about public transport projects in your area. If you require the services of an interpreter, please contact the Translating and Interpreting Service on **131 450** and ask them to call Transport for NSW on **1800 684 490**. The interpreter will then assist you with translation.

Chinese (Traditional):

這份文件包含你所在地區公共交通工程項目的重要信息。如果你需要傳譯服務，請致電翻譯與傳譯服務機構，電話131 450，要求他們為你接通交通工程部(Transport for NSW)，電話是 1800 684 490。傳譯員會為你做翻譯。

Italian:

Il presente documento contiene importanti informazioni sulle iniziative nel campo del trasporto pubblico nella vostra zona. Se desiderate i servizi di un interprete, contattate il Servizio traduzioni e interpreti al numero 131 450 indicando di voler parlare con Transport for NSW al numero 1800 684 490. L'interprete vi aiuterà a condurre la conversazione telefonica.

Spanish:

El presente documento contiene información importante sobre proyectos de transporte público en su área. Si requiere los servicios de un intérprete, llame al Translating and Interpreting Service al 131 450 y pídale que llamen a Transport for NSW, teléfono: 1800 684 490. Luego el intérprete le ayudará con la traducción.

Filipino:

Ang dokumentong ito ay naglalaman ng mahalagang impormasyon tungkol sa mga proyektong transportasyon na pampubliko sa inyong lugar. Kung kailangan ninyo ng serbisyo ng tagapagpaliwanag, makipag-ugnayan po sa Serbisyo ng Pagsasalin at Pagpapaliwanag sa 131 450 at hilingan silang tawagan ang Transportasyon para sa NSW sa 1800 684 490. Tutulungan kayo ng tagapagpaliwanag sa pagsasalin.