



Transport Access Program

Narara Station Upgrade

Project update

April 2021

Construction on the Narara Station upgrade is progressing well with construction of the lift pits and lift shaft installation underway during March.

Upcoming work

Work will continue in April and includes:

- utility investigations and site surveying work
- installation of hoarding around the lift shaft locations
- lift shaft construction and installation work including installation of concrete and steel lift shaft components
- construction of the new pedestrian ramp from Narara Valley Drive to the station entrance, including piling, earthworks and concrete work
- regrading and asphaltting of the Goonak Parade station entrance
- installation of tactiles, hearing loops on the station platforms
- construction of a new accessible ramp to Platform 1
- delivery of equipment and operational machinery
- relocation and installation of services.

Equipment to be used includes surveying equipment, vacuum trucks, elevated working platforms, excavators, cranes, semi-trailers, piling rig, scaffolding, light vehicles and hand tools.

Temporary changes to commuter car parking

During April, **up to 12 car parking spaces in the Narara Valley Drive Commuter Car Park and up to 14 car parking spaces Goonak Parade Commuter Car Park will be temporarily unavailable** during lift shaft, ramp and car park construction work. The southern end of the Narara Valley Drive Car Park will be temporarily closed.

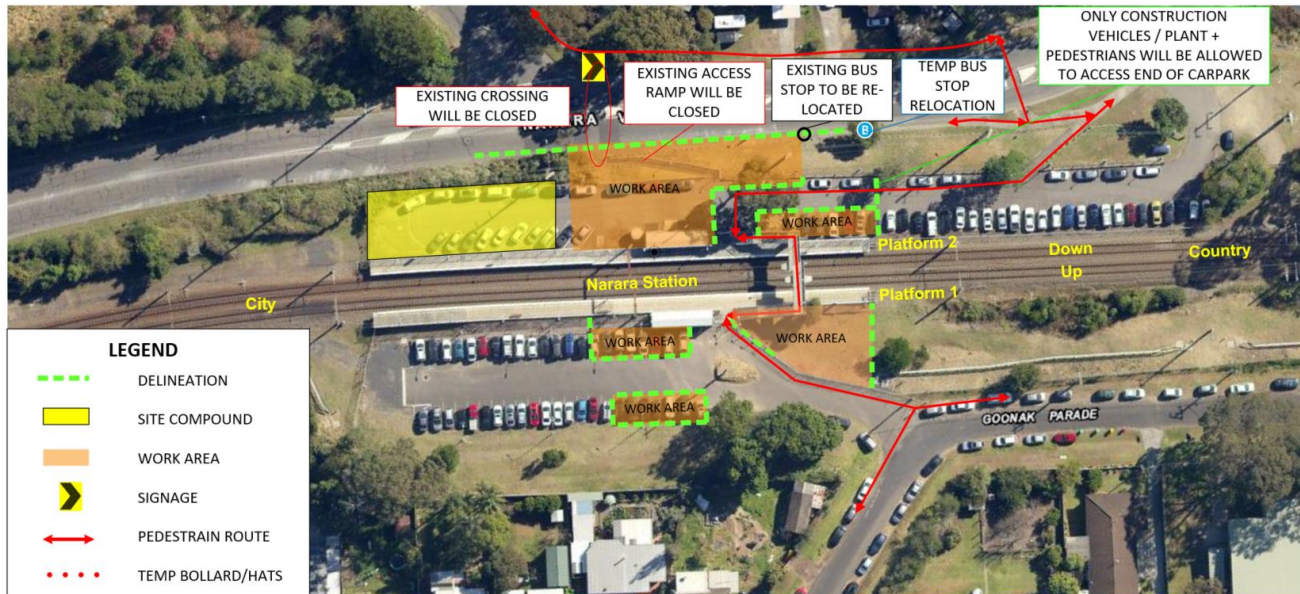
Pedestrian detours will be in place to maintain access to the station during this time. This is to ensure the safety of customers and workers while lift, ramp and car park construction activities are underway. Traffic control and signage will be in place to assist road users and pedestrians. Please see the map below for more information. See map below for access and pedestrian detours.

Ramp Access and temporary bus stop relocation

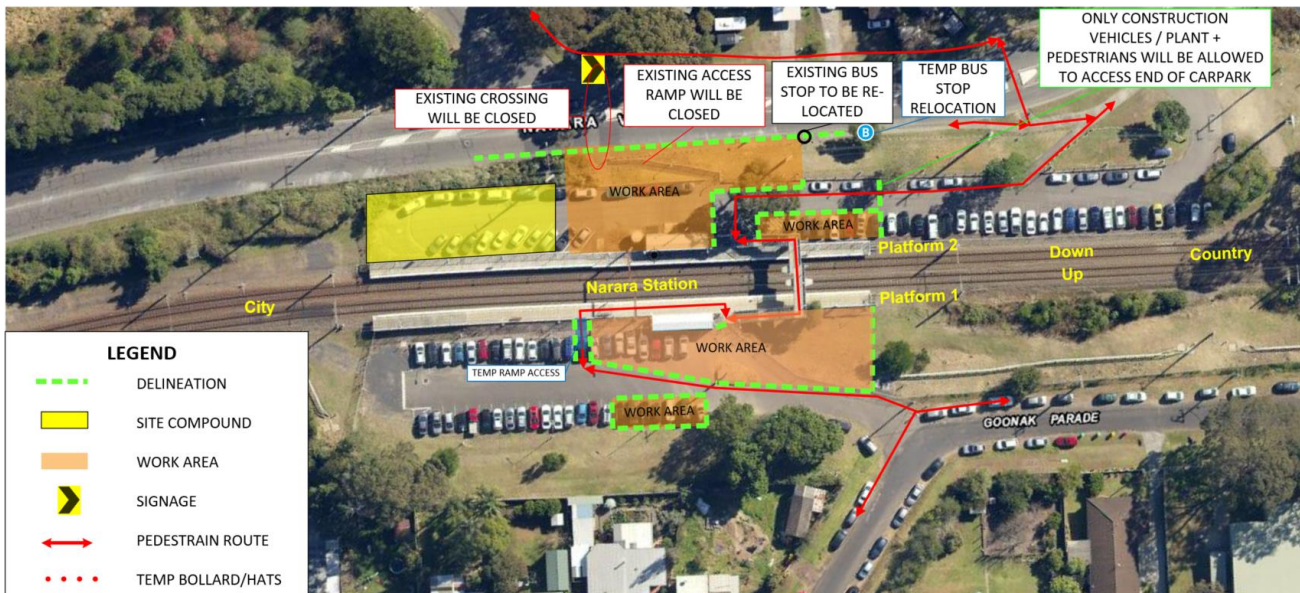
From Monday 12 April 2021, the Southern access ramp located along Narara Valley Drive will be closed during piling, earthworks and construction of the new pedestrian ramp.

From Thursday 22 April 2021, the road crossing and footpath adjacent to this ramp will be closed. Signage and barriers will be in place to assist road users and pedestrians during this time.

The bus stop located along Narara Valley Drive will be relocated approximately 20 metres North of its current position during earthworks and construction of the new pedestrian ramp. Signage will be in place to assist road users and pedestrians during this time.



Map of work locations, access changes and detours from Tuesday 1 April until early May 2021.



Map of work locations, access changes and detours from Friday 16 April to until early May 2021.

Construction hours

Standard construction hours are **7am to 6pm Monday to Friday** and **8am to 1pm on Saturdays**. We will notify nearby residents and businesses in advance if work needs to be completed outside these times.

For the safety of staff, customers and the community, some work will be completed outside standard construction hours. We will notify nearby residents and businesses in advance if we need to work outside these times.

Keep in touch

Transport for NSW is committed to keeping the community informed throughout the delivery of the project. You can stay informed via the project website transport.nsw.gov.au/narara. We will also keep the community informed via newsletters, advertisements and signage.

For further information on the project or to receive project updates via email, please call the Project Infoline on **1800 684 490** or email projects@transport.nsw.gov.au.

For all urgent enquiries or complaints regarding construction activities, please call our 24-hour Construction Response Line on **1800 775 465**.

Chinese (Traditional):

這份文件包含你所在地區公共交通工程項目的重要信息。如果你需要傳譯服務，請致電翻譯與傳譯服務機構，電話131 450，要求他們為你接交通工程處(Transport for NSW)，電話是 1800 684 490。傳譯員會為你做翻譯。

Italian:

Il presente documento contiene importanti informazioni sulle iniziative nel campo del trasporto pubblico nella vostra zona. Se desiderate i servizi di un interprete, contattate il Servizio traduzioni e interpreti al numero 131 450 indicando di voler parlare con Transport for NSW al numero 1800 684 490. L'interprete vi aiuterà a condurre la conversazione telefonica.

Spanish:

El presente documento contiene información importante sobre proyectos de transporte público en su área. Si requiere los servicios de un intérprete, llame al Translating and Interpreting Service al 131 450 y pídale que llamen a Transport for NSW, teléfono: 1800 684 490. Luego el intérprete le ayudará con la traducción.

Filipino:

Ang dokumentong ito ay naglalaman ng mahalagang impormasyon tungkol sa mga proyektong transportasyon na pampubliko sa inyong lugar. Kung kailangan ninyo ng serbisyo ng tagapagpaliwanag, makipag-ugnayan po sa Serbisyo ng Pagsasalin at Pagpapaliwanag sa 131 450 at hilingan silang tawagan ang Transportasyon para sa NSW sa 1800 684 490. Tutulungan kayo ng tagapagpaliwanag sa pagsasalin.



This document contains important information about public transport projects in your area. If you require the services of an interpreter, please contact the Translating and Interpreting Service on **131 450** and ask them to call Transport for NSW on **1800 684 490**. The interpreter will then assist you with translation.