



Wahroonga Station Upgrade

FAQ

Impacts to the Redleaf Avenue bridge, September – November 2021

What is happening to the Redleaf Avenue bridge?

Following the first stage of bridge refurbishment work from April to June 2021, the second stage of refurbishment work is scheduled to occur on the Redleaf Avenue bridge from September to November.

Reconstruction of the bridge deck is being completed concurrently with the Wahroonga Station Upgrade, and includes drainage, waterproofing, laying of new asphalt and line marking. Additional work includes the installation of traffic barriers and anti-throw protection screens, as well as the replacement of the Sydney Water main and relocation of utility assets into the bridge deck

A single lane closure must be in place to ensure the safety of workers, vehicles and pedestrians.

When is it happening?

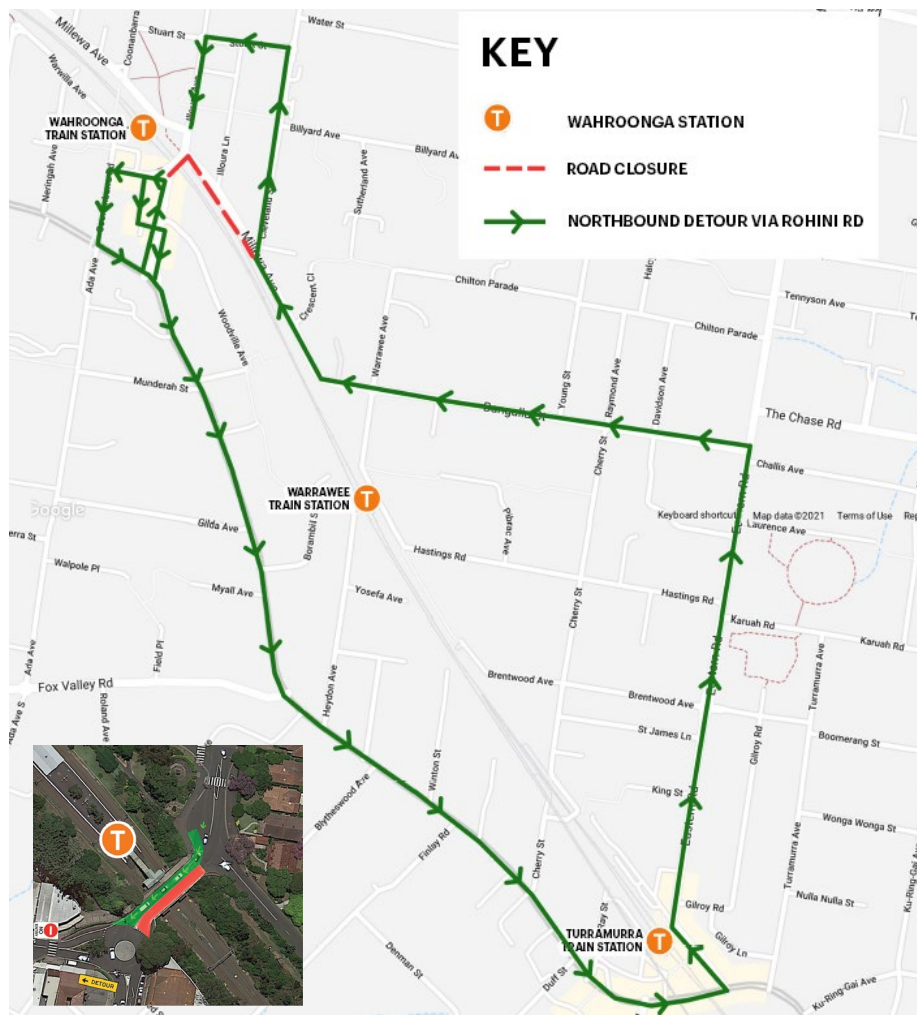
The timing of work and associated traffic impacts is as follows

- **7am Saturday 4 – 5pm Sunday 26 September** – single-lane closure with northbound traffic detour
- **5pm Sunday 26 September – 7am Monday 18 October** – road open to traffic in both directions
- **7am Monday 18 – 5pm Sunday 21 November** – single-lane closure (Sat 6 + Sunday 7 November, full closure during weekend work) with a single lane traffic detour to complete the next stage of construction on Redleaf Avenue bridge. The detour selected for this period will consider the outcomes of the three week trial and any changes to traffic volumes.

Should the work change based on advice by the NSW Government, which may impact the timing of our work, the community will be notified.

Northbound traffic detour

The single lane closure will be in place to ensure the safety of workers, vehicles and pedestrians. Vehicles have two options of detours for northbound motorists via Rohini Street and Eastern Road as per the below map. Access will be maintained for southbound traffic.



Will there be any full bridge closures?

A full closure will be in place from **Saturday 6 November to Sunday 7 November** with northbound and southbound detours in place.

Traffic detour selection and alternatives considered

Modelling and reports on previous arrangements have been undertaken by independent Traffic Engineers to ensure detours selected are reduced in length wherever possible.

From April to June 2021, during the first stage of the bridge refurbishment, a single-lane traffic detour was implemented for traffic traveling southbound, meaning traffic could not enter the village from the park.

We listened to community feedback about this arrangement, and implemented a trial period of stop/slow (contraflow) traffic arrangement, which meant traffic could travel in both directions over the bridge. While this arrangement increased access to the village, impacts extended to the wider road network, and resulted in significant traffic queueing on the Pacific Highway and elsewhere on the road network, as well as safety concerns with motorists.

Due to significantly lower traffic volumes being experienced on the Pacific Highway, a northbound traffic detour will be trialled for a three-week period, which means traffic can enter Wahroonga Village from the park side. This will be in place from **7am Saturday 4 September to 5pm Sunday 26 September**.

What will traffic arrangements be during future traffic single lane closures?

The Redleaf Avenue bridge will be open to traffic traveling in both directions from 5pm Sunday 26 September and 7am Monday 18 October.

Further lane closures will be in place from **7am Monday 18 October to 5pm Sunday 21 November** to complete the next stage of construction on Redleaf Avenue bridge. We will provide further details of the closure in future community notifications, which will consider the outcomes of the three week trial and any changes to traffic volumes.

Once these periods of work are complete, there will be no further impacts to the road network as part of this project. We thank you for your ongoing patience while we undertake this important work.

What changes will there be to pedestrian access from September to November?

There may be some periods where pedestrian access is changed.

Where pedestrian access over the Redleaf Avenue bridge is not available, the detour will be via the Heritage bridge. Pedestrians who are unable to use the detour will be assisted by traffic control staff to safely cross the road bridge.

The community will be notified prior to any pedestrian changes including detours via project notification and signage.

Will businesses be open in Wahroonga Village during this work? Will access change?

There won't be any impact to accessing shops during this work. Vehicle access is available via the detour, otherwise we encourage customers to park and walk into the village to save some time.

I don't want to take the vehicle detour. Where can I park to access the local businesses?

There is plenty of parking available on the eastern side of Wahroonga Station. Customers are encouraged to park, walk and shop in the village. Parking is readily available nearby, as per the map available on page 5.

Will parking be impacted because of the work?

No parking spaces will be impacted as a result of this work.

How has the community been informed about these changes?

The community will be informed about the changes through a range of measures, including:

- Advance notification of upcoming traffic changes in monthly notifications from August to November
- Details within the September monthly notification, which is distributed to all properties within 1000m of the station, as well as digitally to the project distribution list
- Specific notifications to key stakeholder groups including schools and transport providers
- Signage in Wahroonga Village in advance of the changes including large detour and changed traffic signage, and roadside variable messaging boards

- Businesses and directly affected residential properties will be doorknocked (pending current covid advice) to raise awareness of the closure and detour routes
- Geo-targeted social media posts
- Dedicated project webpage with project information
- Newspaper advertisements in the North Shore Times
- Traffic control and signage will be on site at the Redleaf Avenue bridge to assist pedestrians and motorists during construction.

Is this work definitely happening? What about Covid restrictions?

We are making arrangements for this work as detailed in the project notification.

Should the NSW Government make any further announcements and restrictions change our ability to complete the work, our work schedule may change. We encourage you to subscribe to our project email distribution for the latest information, by calling us on 1800 684 490 or emailing projects@transport.nsw.gov.au.

What other Transport for NSW projects are taking place nearby Wahroonga Station?

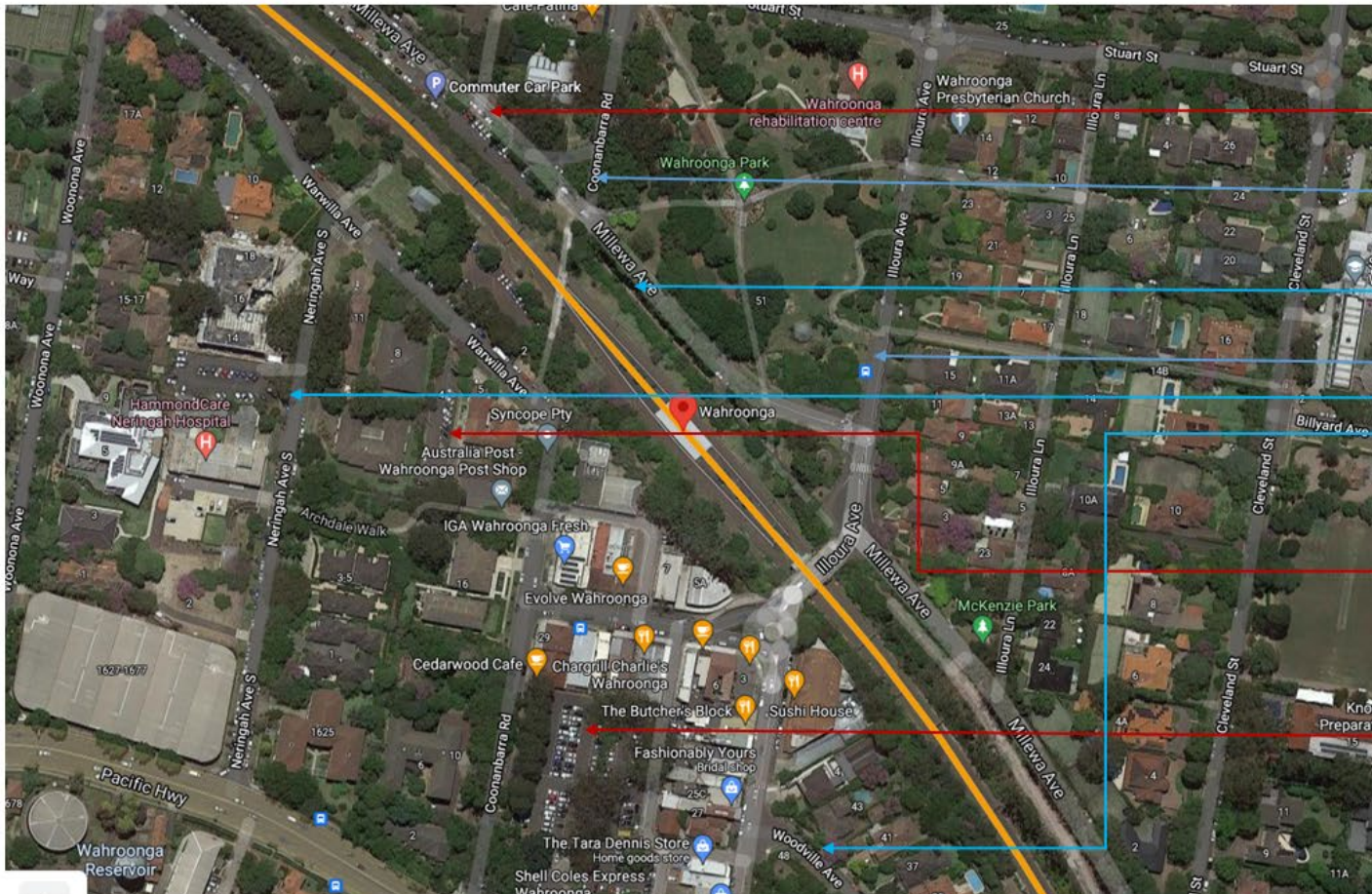
Adjacent to the Wahroonga Station Upgrade, is the Pacific Highway upgrade between Turramurra and Wahroonga Pinch Point Project. In September 2021, work will continue to upgrade intersections along the Pacific Highway between Turramurra and Wahroonga. For more information, please visit www.rms.nsw.gov.au/projects/pacific-hwy-turramurra-wahroonga.

How can I find out more?

We will continue to keep the community informed with regular project notifications and frequent online updates published to the project website www.transport.nsw.gov.au/wahroonga

If you would like to be added to the project distribution list, or for more information on the Wahroonga Station Upgrade, please contact us on **1800 684 490** or email projects@transport.nsw.gov.au.

For all urgent enquiries or complaints regarding construction activities, please call our 24-hour Construction Response Line on **1800 775 465**.



- **CCP: 24 Millewa Avenue, Wahroonga**
- **Monitoring times: RailCorp Commuter Car park**
- **Spaces: 52**

Alternative Street parking at:

Woodville Avenue: 2 hour parking (Monday and Friday 8:30 pm to 6pm / Saturday 8:30am to 12:30pm)

Neringah Avenue: 2 Hour parking Mon to Fri 8 am to 5 pm

Millewa Ave: 2 hour parking (Monday and Friday 8:30 pm to 6pm / Saturday 8:30am to 12:30pm)

Illoura Avenue: 3 hour parking (Monday and Friday 8:30 pm to 6pm / Saturday 8:30am to 12:30pm)

Coonanbarra Rd: School zone, parking available but limited

- **CCP: 5 Warwilla Avenue, Wahroonga**
- **Monitoring times: RailCorp Commuter Car park**
- **Spaces: 47**

9 Coonanbarra Road, Wahroonga (Garage)

Monitoring times: Corner Railway/ Free 2 hours

Monday to Sunday 8:30am to 6 pm / free outside these hours

Spaces: 179