

Transport Access Program

Wahroonga Station Upgrade

Project update

July 2021



Artist's impression of the Wahroonga Station Upgrade, subject to detailed design

Transport for NSW is upgrading Wahroonga Station to make it easier for everyone to access, including people with a disability or limited mobility, parents/carers with prams, and customers with luggage.

Upcoming work

Work will continue in July and includes:

- lift shaft construction, construction of the new footbridge and lift canopy
- continued refurbishment of the station toilets (one unisex toilet will remain open)
- service investigation work and relocation of services and utilities including in the garden bed and future pedestrian ramp location
- vegetation and tree clearing and trimming in the rail corridor and the garden bed and future pedestrian ramp location
- potholing work
- installation of temporary structures including hoardings and completion of precast barriers
- construction of the new pedestrian ramp including concrete placement and piling work
- Boarding Assistance Zone canopy construction work.

Equipment to be used includes tipper trucks, concrete pumps and concrete trucks, vacuum trucks, piling rigs, cranes, small excavators, saw cutters, rollers, surveying equipment and hand tools.

For more information call **1800 684 490**,

Email projects@transport.nsw.gov.au or visit www.transport.nsw.gov.au/wahroonga

For urgent enquiries or complaints regarding construction activities, please call 24 hours **1800 775 465**

Weekend work in July – Saturday 3, Sunday 4 and Monday 5 July

Work will take place from **2am Saturday 3 July to 2am Monday 5 July** and will include:

- installation of temporary station access
- installation of transformer in the railway garden bed
- platform extension works
- Boarding Assistance Zone canopy construction work
- continued construction of concourse canopy
- excavation work on the platform.

During the work, access to Wahroonga Station will be temporarily closed. Buses will replace trains during this time. Please visit www.transportnsw.info or call **131 500** for up to date information regarding service updates and replacement buses during this time.

Equipment to be used includes tipper trucks, concrete pumps and concrete trucks, two multi cranes, elevated work platforms, vacuum trucks, excavators, light vehicles surveying equipment and hand tools.

Traffic changes

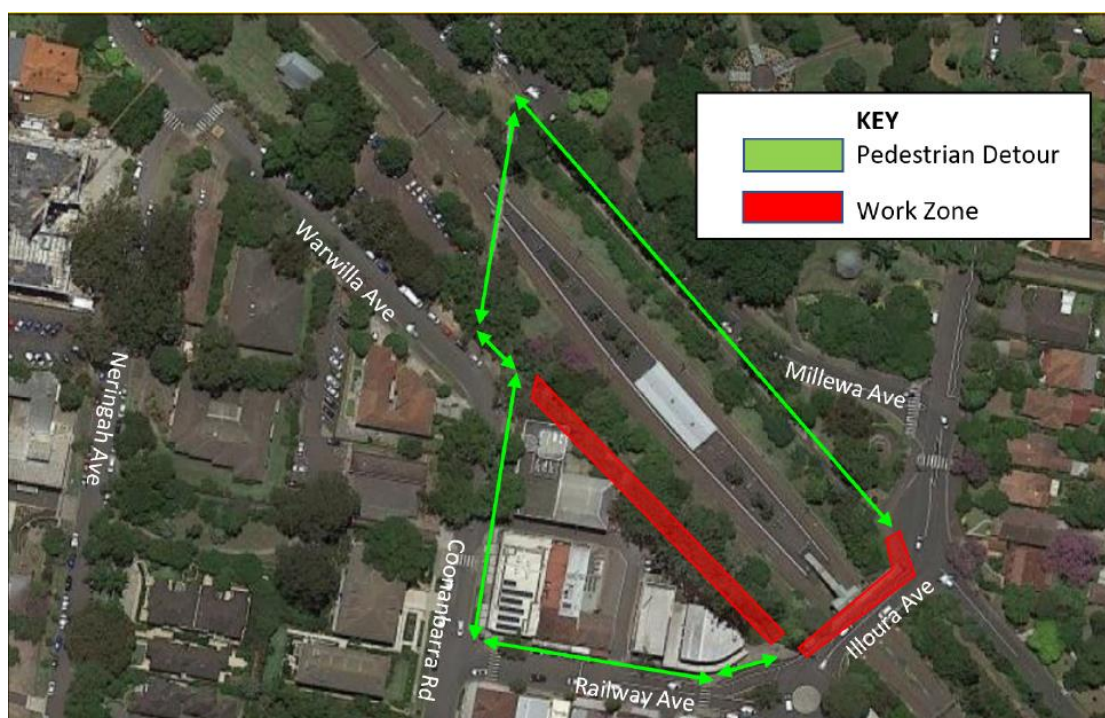
From **Saturday 3 July to Sunday 4 July**, a single lane closure will be in place at the Redleaf Avenue bridge. The bridge will remain open to traffic traveling in both directions with a stop/slow traffic arrangement in place, meaning traffic can enter and leave the village via the Redleaf Avenue bridge.

Further traffic changes on Redleaf Avenue Bridge will be required in the coming months. The next single-lane detour is scheduled to take place from September to November 2021. Further details of this work will be provided in the coming months.

Pedestrian access changes

Pedestrian access to Wahroonga station coming from Illoura Avenue and crossing the Redleaf Avenue bridge will be temporarily closed **from 2am Saturday 3 July to 2am Monday 5 July**.

A pedestrian detour will be in place via the heritage bridge at the northern end of Wahroonga Station. Pedestrians that cannot use the detour will be assisted by traffic control.



Map of pedestrian access changes occurring 2am Saturday 3 July to 2am Monday 5 July.

For more information call **1800 684 490**,

Email projects@transport.nsw.gov.au or visit www.transport.nsw.gov.au/wahroonga

For urgent enquiries or complaints regarding construction activities, please call our 24 hour Construction Response Line on **1800 775 465**

Throughout July there will be some minor changes to the pedestrian access on Redleaf Avenue bridge. Access over Redleaf Avenue bridge and to Wahroonga station will always be maintained, please follow the directional signage in place.

Temporary changes to station toilets

The existing male toilet in the station building has been temporarily closed while it is upgraded to a unisex ambulant toilet. The existing female toilet has been converted to a temporary unisex toilet. Signage is in place to help with these temporary changes.

Thank you

The project team have recently had two successful weekends of work (5-6 and 12-14 June), having completed their planned activities safely and on time.

Work which was achieved included installation of the new footbridge and station entry concourse, the steel lift shaft, canopy and anti-throw screens. Platform work included construction of footings for the boarding assistance zone, and excavation into the platform for the power supply upgrade.

The full closure of the Redleaf Avenue bridge to pedestrians and vehicles was necessary to enable the work to safely occur, as 250t and 300t cranes were in place to perform heavy lifts.

The project recognises that this work is impactful on the local community, and would like to thank everyone for their patience while we undertake this important work.

We are making great progress on the project, and are on target for early 2022 completion.



Cranes parked on Redleaf Avenue bridge, 12-14 June 2021

Construction hours

Standard construction hours are **7am to 6pm Monday to Friday and 8am to 1pm on Saturdays**.

For the safety of staff, customers and the community, some work will be completed outside standard construction hours. We will notify nearby residents and businesses in advance if we need to work outside these times.

Keep in touch

We will continue to keep the community informed with project updates. Further information is available on the project website www.transport.nsw.gov.au/wahroonga. If you would like to be added to the project distribution list, please contact us on **1800 684 490** or email projects@transport.nsw.gov.au

For all urgent enquiries or complaints regarding construction activities, please call our 24-hour Construction Response Line on 1800 775 465.

Nearby Transport for NSW projects

Adjacent to the Wahroonga Station Upgrade, is the Pacific Highway upgrade between Turramurra and Wahroonga Pinch Point Project. In July 2021, work will continue to upgrade intersections along the Pacific Highway between Turramurra and Wahroonga. For more information, please visit www.rms.nsw.gov.au/projects/pacific-hwy-turramurra-wahroonga.



This document contains important information about public transport projects in your area. If you require the services of an interpreter, please contact the Translating and Interpreting Service on **131 450** and ask them to call Transport for NSW on **1800 684 490**. The interpreter will then assist you with translation.

For more information call **1800 684 490**,

Email projects@transport.nsw.gov.au or visit www.transport.nsw.gov.au/wahroonga

For urgent enquiries or complaints regarding construction activities, please call our 24 hour Construction Response Line on **1800 775 465**