



Transport Access Program

Wahroonga Station Upgrade

Project update

August 2021

Transport for NSW is upgrading Wahroonga Station to make it easier for everyone to access, including people with a disability or limited mobility, parents/carers with prams, and customers with luggage.

Pause on construction

In line with recent restrictions introduced by the NSW Government on 17 July 2021 to help keep our communities safe, construction activities on Wahroonga Station Upgrade are paused until Friday 30 July. We are making arrangements for our work activities to safely recommence from 31 July 2021, as detailed in this notification. Should these restrictions change based on advice by the NSW Government, which may impact the timing of our work, the community will be notified. We encourage you to subscribe to our project email distribution for the latest information, by calling us on 1800 684 490 or emailing projects@transport.nsw.gov.au.

The safety and wellbeing of our workforce and the wider community is our highest priority. You may see some of our workers on site as they prepare the sites for work to recommence. Please be assured our people and worksites follow NSW Health's COVID-19 requirements and will continue to do so.

Upcoming work

Work will continue in August and includes:

- lift shaft construction, construction of the new footbridge and lift canopy
- continued refurbishment of the station toilets (one unisex toilet will remain open)
- services investigation, relocation of services and utilities and vegetation clearing at the location of the future pedestrian ramp and in the rail corridor (near the corner of Railway Avenue and Redleaf Avenue)
- construction of the new pedestrian ramp including concrete placement and piling work
- potholing investigative work
- installation of temporary structures including hoardings and completion of precast concrete barriers
- Boarding Assistance Zone canopy installation work.

Equipment to be used includes tipper trucks, concrete pumps and concrete trucks, vacuum trucks, piling rigs, cranes, small excavators, saw cutters, rollers, surveying equipment and hand tools.

Night work in August – Monday 2, Wednesday 4 and Thursday 5 August

Work will take place from 7pm to 7am on Monday 2 August, Wednesday 4 August and Thursday 5 August and will include:

- delivery of materials to the site
- concrete pour for platform extension work
- installing scaffold around the lift shaft
- Boarding Assistance Zone canopy construction work

During the work, access to Wahroonga Station will be temporarily closed. Buses will replace trains during this time. Please visit www.transportnsw.info or call **131 500** for up to date information regarding service updates and replacement buses during this time.

Equipment to be used includes tipper trucks, concrete pumps and concrete trucks, excavators, light vehicles surveying equipment and hand tools.

Traffic changes

During August, temporary traffic changes may be in place when required at the Redleaf Avenue bridge. A single lane closure will be in place temporarily while work is taking place. The bridge will remain open to traffic traveling in both directions with a stop/slow traffic arrangement in place, meaning traffic can enter and leave the village via the Redleaf Avenue bridge. Please follow the directions of traffic control and allow extra travel time.

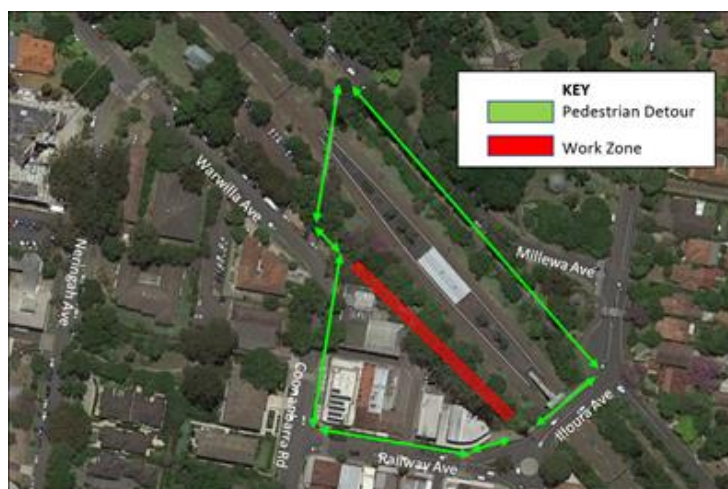
Further traffic changes on Redleaf Avenue Bridge will be required in the coming months. The next single-lane detour is scheduled to take place from September to November 2021. Further details of this work will be provided in the coming months.

Pedestrian access changes

From Friday 6 August until Tuesday 31 August the pedestrian footpath along the platform corridor between Illoura Avenue and the Heritage footbridge (on the village side) will be temporarily closed.

Pedestrian access on Redleaf Avenue, Redleaf Avenue bridge and the heritage bridge will be maintained. Please follow the directional signage in place.

Access to Wahroonga station will be maintained when trains are running.



Pedestrian changes during August

Temporary changes to station toilets

The existing male toilet in the station building has been temporarily closed while it is upgraded to a unisex ambulant toilet. The existing female toilet has been converted to a temporary unisex toilet. Signage is in place to help with these temporary changes.

Construction hours

Standard construction hours are **7am to 6pm Monday to Friday, and 8am to 1pm Saturdays**.

This work schedule may be subject to change due to NSW public health orders.

Keep in touch

We will continue to keep the community informed with project updates. Further information is available on the project website www.transport.nsw.gov.au/wahroonga. If you would like to be added to the project distribution list, please contact us on **1800 684 490** or email projects@transport.nsw.gov.au

For all urgent enquiries or complaints regarding construction activities, please call our 24-hour Construction Response Line on **1800 775 465**.



This document contains important information about public transport projects in your area. If you require the services of an interpreter, please contact the Translating and Interpreting Service on **131 450** and ask them to call Transport for NSW on **1800 684 490**. The interpreter will then assist you with translation.

For more information call **1800 684 490**,

Email projects@transport.nsw.gov.au or visit www.transport.nsw.gov.au/wahroonga

For urgent enquiries or complaints regarding construction activities, please call our 24 hour Construction Response Line on **1800 775 465**