



# Transport Access Program

## Wahroonga Station Upgrade

### Project update

September 2021

Transport for NSW is upgrading Wahroonga Station to make it easier for everyone to access, including people with a disability or limited mobility, parents/carers with prams, and customers with luggage.

### Upcoming work

Work will continue in September. This work is in line with the current Public Health Orders and a COVID-19 Safe plan is in place, including masks and QR codes.

Work includes:

- construction of the lift shaft, new footbridge and lift canopy
- continued refurbishment of the station toilets (one unisex toilet will remain open)
- underground service investigation, relocation of services and utilities
- vegetation clearing within the rail corridor
- construction of the new pedestrian ramp including concrete placement and piling work
- installation of temporary structures including hoardings and completion of precast concrete barriers
- upgrading electrical network
- Boarding Assistance Zone canopy installation work.

Equipment to be used includes tipper trucks, concrete pumps and concrete trucks, vacuum trucks, piling rigs, cranes, small excavators, saw cutters, rollers, surveying equipment and hand tools.



*Image: Wahroonga Station mid-August, entry with new canopies, anti-throw screens and glazing in place, and temporary pedestrian walkway.*

# Redleaf Avenue bridge, temporary changes in September

The northbound lane of the Redleaf Avenue bridge will be temporarily closed from **7am Saturday 4 September to 5pm Sunday 26 September** to enable the upgrade of the bridge deck.

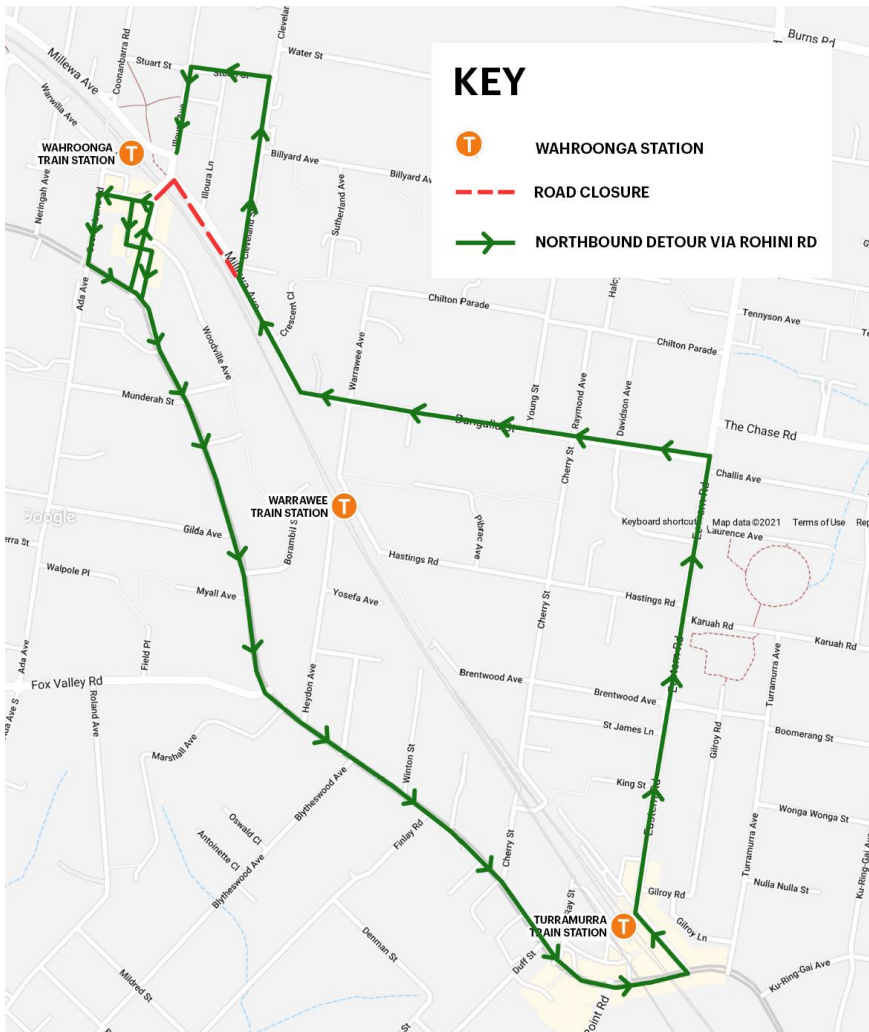
In response to community feedback from previous detour arrangements, and taking into account the low traffic volumes being experienced on the Pacific Highway, due to significantly lower traffic movements,

we have been able to implement this northbound traffic detour so local traffic can enter Wahroonga Village from the park side. This detour will be trialled for three week period.

Reconstruction of the bridge deck is being completed concurrently with the Wahroonga Station Upgrade, and includes drainage, waterproofing, laying of new asphalt and line marking. Additional work includes the installation of traffic barriers and anti-throw protection screens, as well as the replacement of the Sydney Water main and relocation of utility assets into the bridge deck

A single lane closure must be in place to ensure the safety of workers, vehicles and pedestrians.

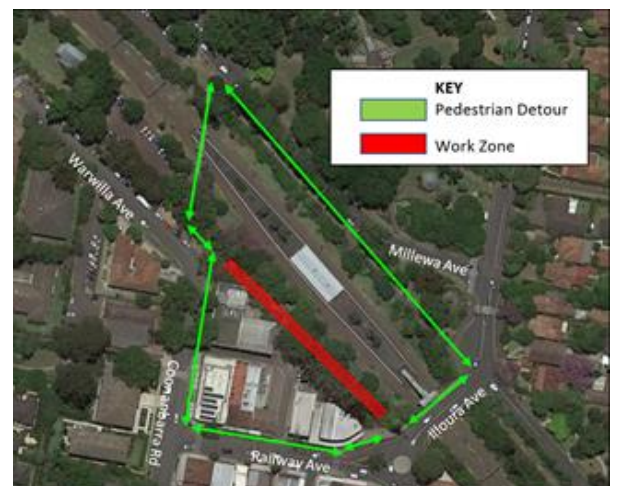
**Detours will be in place for northbound motorists** via Rohini Street and Eastern Road. Access will be maintained for southbound traffic.



Map of traffic detour from 7am Saturday 4 September to 5pm Sunday 26 September

## Pedestrian access changes

During September, the pedestrian footpath along the platform corridor between Illoura Avenue and the Heritage footbridge (on the village side) will continue to be closed. Pedestrian access on Redleaf Avenue, Redleaf Avenue bridge and the heritage bridge will be maintained. Please follow the directional signage in place. **Customer access to Wahroonga station will be maintained** when trains are running.



## Alternative traffic arrangements we have explored

From April to June 2021, during the first stage of the bridge refurbishment, a single-lane traffic detour was implemented for traffic traveling southbound, meaning traffic could not enter the village from the park.

We listened to community feedback about this arrangement, and implemented a trial period of stop/slow (contraflow) traffic arrangement, which meant traffic could travel in both directions over the bridge. While this arrangement increased access to the village, impacts extended to the wider road network, and resulted in significant traffic queueing on the Pacific Highway and elsewhere on the road network, as well as safety concerns with motorists.

Due to significantly lower traffic volumes being experienced on the Pacific Highway, a northbound traffic detour will be trialled for a three-week period, which means traffic can enter Wahroonga Village from the park side. This will be in place from **7am Saturday 4 September to 5pm Sunday 26 September**.

## Future traffic impacts

The Redleaf Avenue bridge will be open to traffic traveling in both directions from **5pm Sunday 26 September and 7am Monday 18 October**.

Further lane closures will be in place from **7am Monday 18 October to 5pm Sunday 21 November** to complete the next stage of construction on Redleaf Avenue bridge. We will provide further details of the closure in future community notifications, which will consider the outcomes of the three week trial and any changes to traffic volumes.

Once these periods of work are complete, there will be no further impacts to the road network as part of this project. We thank you for your ongoing patience while we undertake this important work.

## Weekend work in September

Work will be carried out from **2am Saturday 18 September to 2am Monday 20 September** and will include:

- installation of a canopy at the Boarding Assistance Zone
- structural steel installation
- arch remediation
- preparation for platform resurfacing
- installing scaffold around the lift shaft
- delivery of materials
- energising the new electrical transformer.

Equipment to be used includes tipper trucks, concrete pumps and concrete trucks, small cranes, excavators, light vehicles surveying equipment and hand tools.

The single-lane traffic detour will remain place during the weekend work.

During this work, access to Wahroonga Station will be closed and Buses will replace trains. Please visit [www.transportnsw.info](http://www.transportnsw.info) or call **131 500** for up-to-date information regarding service updates and replacement buses.

## Are you studying for the Higher School Certificate?

If a member of your household is studying for the Higher School Certificate (HSC), please contact us as soon as possible. We will make every effort to limit disruption to HSC students during the exam period.

## Temporary changes to station toilets

The existing male toilet in the station building has been temporarily closed while it is upgraded to a unisex ambulant toilet. The existing female toilet has been converted to a temporary unisex toilet. Signage is in place to help with these temporary changes.

## Construction hours

Standard construction hours are **7am to 6pm every day, including Sundays and public holidays**. This is to facilitate social distancing on construction sites and support the health and wellbeing of workers.

*This work schedule may be subject to change due to NSW Public Health Orders.*

## Keep in touch

We will continue to keep the community informed with project updates. Further information is available on the project website [www.transport.nsw.gov.au/wahroonga](http://www.transport.nsw.gov.au/wahroonga). If you would like to be added to the project distribution list, please contact us on **1800 684 490** or email [projects@transport.nsw.gov.au](mailto:projects@transport.nsw.gov.au)

For all urgent enquiries or complaints regarding construction activities, please call our 24-hour Construction Response Line on **1800 775 465**.

## Nearby Transport for NSW projects

Adjacent to the Wahroonga Station Upgrade, is the Pacific Highway upgrade between Turramurra and Wahroonga Pinch Point Project. In September 2021, there will be intermittent changed traffic conditions on the Pacific Highway between Fox Valley Road and Gilda Avenue. During nightshifts only, there will be a contraflow in place so new pipes and cables can be installed under the Pacific Highway. Residential access will be maintained at all times. Please follow the direction of traffic controllers.

For more information: 1800 897 841 (24hrs) or [projects@wardcivil.com.au](mailto:projects@wardcivil.com.au)