

# Transport Access Program

## Wahroonga Station Upgrade

Project update

May 2021



Transport for NSW is upgrading Wahroonga Station to make it easier for everyone to access, including people with a disability or limited mobility, parents/carers with prams, and customers with luggage.

## Upcoming work

Work will continue in May and includes:

- lift shaft construction and footbridge piling work
- continued refurbishment of the station toilets (one unisex toilet will remain open)
- reconstruction of the road deck and installation of new road barriers on the northbound lane over Redleaf Avenue bridge
- relocation of services and utilities
- vegetation clearing and trimming in the rail corridor
- installation of temporary structures including hoardings
- Boarding Assistance Zone canopy foundation work.

Equipment to be used includes tipper trucks, concrete pumps and concrete trucks, vacuum trucks, small excavators, saw cutters, rollers, paving machines, surveying equipment and hand tools.

For more information call **1800 684 490**,

Email [projects@transport.nsw.gov.au](mailto:projects@transport.nsw.gov.au) or visit [www.transport.nsw.gov.au/wahroonga](http://www.transport.nsw.gov.au/wahroonga)

For urgent enquiries or complaints regarding construction activities, please call 24 hours **1800 775 465**

## Traffic changes Saturday 10 April – mid June 2021

The southbound lane on Redleaf Avenue bridge will be temporarily closed from 8am Saturday 10 April to mid-June 2021 to allow work to be carried out safely. Detours will be in place for southbound motorists via Ingram Road or Rohini Street. Access will be maintained for northbound traffic.



Map of traffic detour to mid-June 2021.

## Weekend work – Saturday 1 and Sunday 2 May

Weekend work will take place from 6am Saturday 1 to 6pm Sunday 2 May 2021.

Work will include:

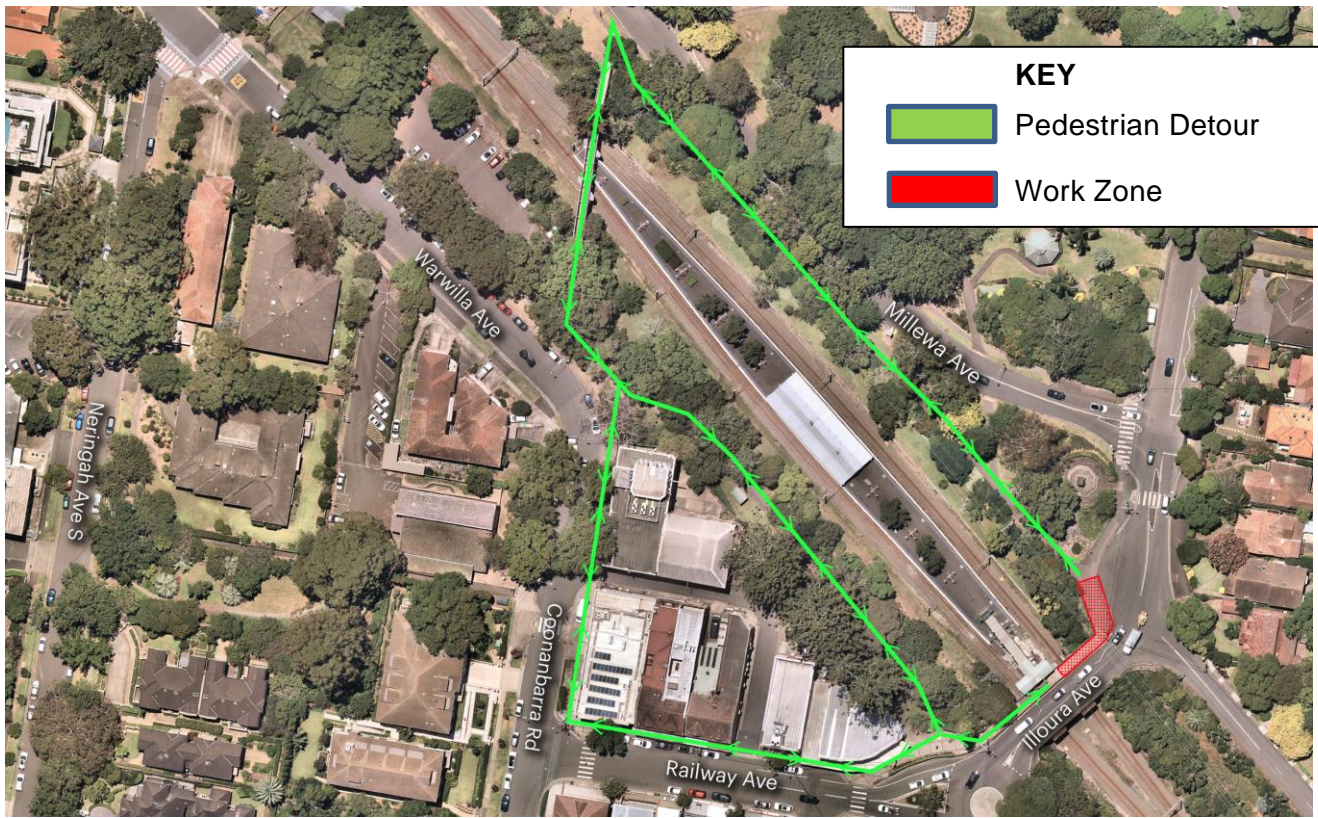
- piling work for the northern pile on the footbridge
- steel installation and concrete placement for the pile
- removal of excavated material.

Equipment to be used includes tipper trucks, a piling rig, concrete pumps and concrete trucks, vacuum trucks, small excavators, light vehicles surveying equipment and hand tools.

Pedestrian access to the station coming from Illoura Avenue and crossing the Redleaf Avenue bridge will be temporarily closed from 6am Saturday 1 May until 6pm Sunday 2 May.

A pedestrian detour will be in place via the heritage bridge at the northern end of Wahroonga Station. **Access to the Station entry will be maintained from the southern end of the Redleaf Avenue bridge via the shopping village.** Pedestrians that cannot use the detour will be assisted by traffic control. See map below for pedestrian detours.





*Map of pedestrian access changes occurring on Saturday 1 and Sunday 2 May 2021*

## Night work – 5 to 6 May, 12 to 13 May and 24 to 25 May

Night work will take place from 6pm and 7am on the following dates in May 2021

- **Wednesday 5 to Thursday 6 May**
- **Wednesday 12 to Thursday 13 May**
- **Monday 24 to Tuesday 25 May.**

Work will include:

- concrete placement for bridge support and new lift shaft walls
- concrete and preparation work for the new concrete pavement at Redleaf Avenue.

Equipment to be used includes tipper trucks, small excavators, water truck, small crane concrete pumps and concrete trucks, surveying equipment and hand tools.

During the work access to Wahroonga station will be maintained, with traffic control in place to assist pedestrians.

## Temporary changes to station toilets

The existing male toilet in the station building has been temporarily closed while it is upgraded to a unisex ambulant toilet. The existing female toilet has been converted to a temporary unisex toilet. Signage is in place to help with these temporary changes.

## Construction hours

Standard construction hours are **7am to 6pm Monday to Friday and 8am to 1pm on Saturdays.**

For the safety of staff, customers and the community, some work will be completed outside standard construction hours. We will notify nearby residents and businesses in advance if we need to work outside these times.

## Keep in touch

We will continue to keep the community informed with project updates. Further information is available on the project website [www.transport.nsw.gov.au/wahroonga](http://www.transport.nsw.gov.au/wahroonga). If you would like to be added to the project distribution list, please contact us on **1800 684 490** or email [projects@transport.nsw.gov.au](mailto:projects@transport.nsw.gov.au)

For all urgent enquiries or complaints regarding construction activities, please call our 24-hour Construction Response Line on 1800 775 465.

## Nearby Transport for NSW projects

Adjacent to the Wahroonga Station Upgrade, is the **Pacific Highway upgrade between Turramurra and Wahroonga Pinch Point Project**. In **May 2021**, work will continue to upgrade intersections along the Pacific Highway between Turramurra and Wahroonga. For more information, please visit [www.rms.nsw.gov.au/projects/pacific-hwy-turramurra-wahroonga](http://www.rms.nsw.gov.au/projects/pacific-hwy-turramurra-wahroonga).



This document contains important information about public transport projects in your area. If you require the services of an interpreter, please contact the Translating and Interpreting Service on **131 450** and ask them to call Transport for NSW on **1800 684 490**. The interpreter will then assist you with translation.