



# Transport Access Program

## Wahroonga Station Upgrade

Project update

June 2021



*Artist's impression of the Wahroonga Station Upgrade, subject to detailed design*

Transport for NSW is upgrading Wahroonga Station to make it easier for everyone to access, including people with a disability or limited mobility, parents/carers with prams, and customers with luggage.

## Upcoming work

Work will continue in June and includes:

- lift shaft construction, installation of new footbridge and lift canopy
- continued refurbishment of the station toilets (one unisex toilet will remain open)
- road deck construction and installation of new road barriers on the northbound lane over Redleaf Avenue bridge
- service investigation work and relocation of services and utilities including in the garden bed
- vegetation and tree clearing and trimming in the rail corridor and the garden bed
- potholing work
- installation of temporary structures including hoardings
- Boarding Assistance Zone canopy foundation work.

Equipment to be used includes tipper trucks, concrete pumps and concrete trucks, vacuum trucks, cranes, small excavators, saw cutters, rollers, paving machines, surveying equipment and hand tools.

For more information call **1800 684 490**,

Email [projects@transport.nsw.gov.au](mailto:projects@transport.nsw.gov.au) or visit [www.transport.nsw.gov.au/wahroonga](http://www.transport.nsw.gov.au/wahroonga)

For urgent enquiries or complaints regarding construction activities, please call 24 hours **1800 775 465**

## Traffic changes – Saturday 29 May to Friday 4 June

From **Saturday 29 May to Friday 4 June**, the Redleaf Avenue bridge will be **open to traffic traveling in both directions** with a stop/slow traffic arrangement in place, meaning traffic can enter and leave the village via the Redleaf Avenue bridge.

This traffic arrangement is being trialled in response to customer and stakeholder feedback which we heard regarding traffic flow through the Wahroonga village. The success of this trial will guide the traffic arrangement during the next single-lane detour which scheduled to take place from September to November 2021.

## Weekend work in June

Work will take place **from 9pm Friday 4 June to 5am Monday 7 June** and will include:

- demolition of the footbridge and existing station access
- installation of temporary station access
- Boarding Assistance Zone canopy foundation work
- temporary line marking
- excavation work on the platform.

Work will take place **from 9pm Friday 11 June to 5am Tuesday 15 June** and will include:

- installation of new footbridge and new station access
- installation of new steel lift shaft, canopy and temporary throw screens
- concrete placement work
- excavation work on the platform.

Equipment to be used includes tipper trucks, concrete pumps and concrete trucks, two 250 tonne cranes, elevated work platforms, vacuum trucks, excavators, light vehicles surveying equipment and hand tools.

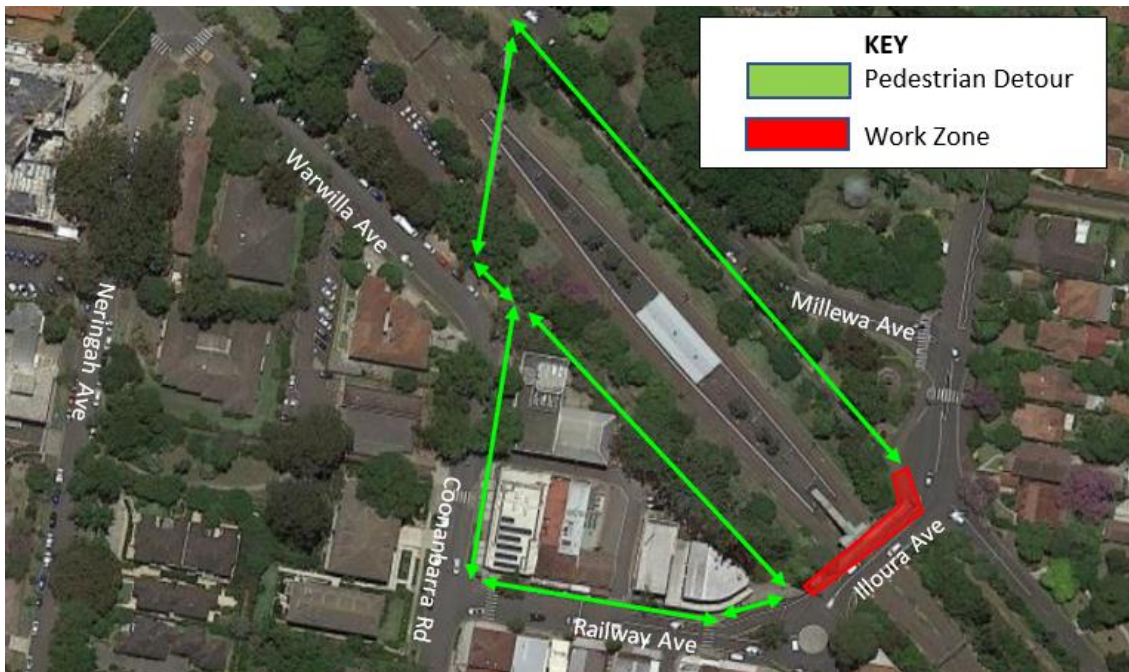
## Access changes during weekend work

To carry out this work safely, temporary access changes will be in place throughout the weekend. Traffic controllers and signage will be in place to assist motorists and pedestrians.

### Pedestrian access changes

Pedestrian access to Wahroonga station coming from Illoura Avenue and crossing the Redleaf Avenue bridge will be temporarily closed **from 9pm Friday 4 June to 5am Monday 7 June and 9pm Friday 11 June until 5am Tuesday 15 June**.

A pedestrian detour will be in place via the heritage bridge at the northern end of Wahroonga Station. Pedestrians that cannot use the detour will be assisted by traffic control. Buses will replace trains from Wahroonga Station during this time. Please visit [www.transportnsw.info](http://www.transportnsw.info) or call 131 500 for up to date information regarding service updates and replacement buses during this time.



**KEY**

- Pedestrian Detour
- Work Zone

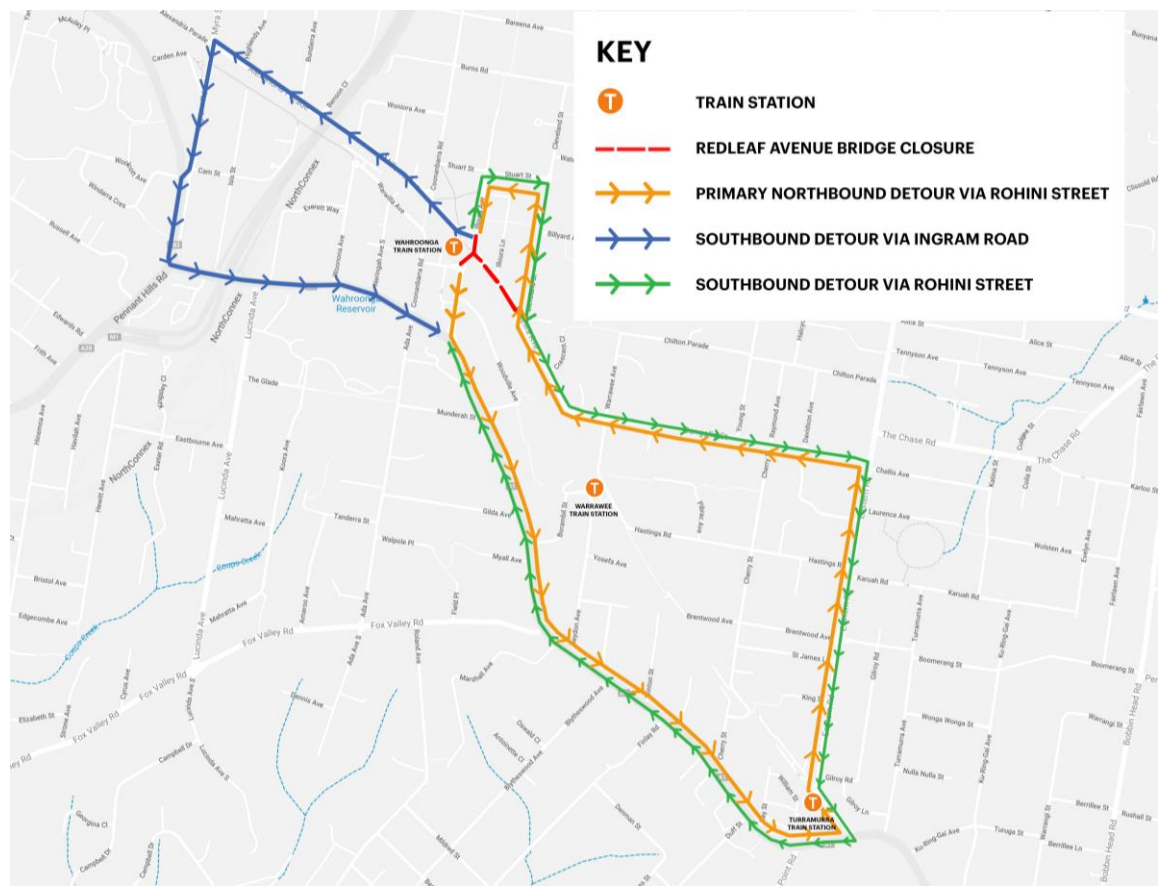
*Map of pedestrian access changes occurring 9pm Friday 4 June to 5am Monday 7 June and 9pm Friday 11 June until 5am Tuesday 15 June.*

**Traffic changes**

**Redleaf Avenue bridge will be temporarily closed from 9pm Friday 4 June to 5am Monday 7 June and from 9pm Friday 11 June to 5am Tuesday 15 June to enable major work for the Wahroonga Station Upgrade.**

Detours during these times will be in place for southbound motorists via Ingram Road or Rohini Street and for northbound motorists via Rohini Street.

The bridge will reopen to two-way traffic between the work weekends, and then will **reopen to two-way traffic from 5am on Tuesday 15 June.**



**KEY**

- TRAIN STATION
- REDLEAF AVENUE BRIDGE CLOSURE
- PRIMARY NORTHBOUND DETOUR VIA ROHINI STREET
- SOUTHBOUND DETOUR VIA INGRAM ROAD
- SOUTHBOUND DETOUR VIA ROHINI STREET

*Map of traffic detour from 9pm Friday 4 June to 5am Monday 7 June and 9pm Friday 11 June until 5am Tuesday 15 June.*

## Midweek night work in June

Night work will take place **from 6pm Tuesday 1 June until 7am Wednesday 2 June 2021**. Work during these times will include:

- utility relocation and investigation work
- concrete pour for bridge support.

Night work will also take place **from 6pm and 7am on Monday 21, Wednesday 23 and Thursday 24 June 2021**. Work during these times will include:

- installation of permanent anti-throw screens
- footbridge concrete pours
- removal of temporary structures on the station platform.

Equipment to be used includes tipper trucks, small excavators, saw cutters, water truck, cranes, concrete trucks and pumps, surveying equipment and hand tools.

During the work, access to Wahroonga Station will be temporarily closed. Buses will replace trains during this time. Please visit [www.transportnsw.info](http://www.transportnsw.info) or call **131 500** for up to date information regarding service updates and replacement buses during this time.

## Temporary changes to station toilets

The existing male toilet in the station building has been temporarily closed while it is upgraded to a unisex ambulant toilet. The existing female toilet has been converted to a temporary unisex toilet. Signage is in place to help with these temporary changes.

## Construction hours

Standard construction hours are **7am to 6pm Monday to Friday and 8am to 1pm on Saturdays**.

For the safety of staff, customers and the community, some work will be completed outside standard construction hours. We will notify nearby residents and businesses in advance if we need to work outside these times.

## Keep in touch

We will continue to keep the community informed with project updates. Further information is available on the project website [www.transport.nsw.gov.au/wahroonga](http://www.transport.nsw.gov.au/wahroonga). If you would like to be added to the project distribution list, please contact us on **1800 684 490** or email [projects@transport.nsw.gov.au](mailto:projects@transport.nsw.gov.au)

For all urgent enquiries or complaints regarding construction activities, please call our 24-hour Construction Response Line on 1800 775 465.

## Nearby Transport for NSW projects

Adjacent to the Wahroonga Station Upgrade, is the Pacific Highway upgrade between Turramurra and Wahroonga Pinch Point Project. In June 2021, work will continue to upgrade intersections along the Pacific Highway between Turramurra and Wahroonga. For more information, please visit [www.rms.nsw.gov.au/projects/pacific-hwy-turramurra-wahroonga](http://www.rms.nsw.gov.au/projects/pacific-hwy-turramurra-wahroonga).



This document contains important information about public transport projects in your area. If you require the services of an interpreter, please contact the Translating and Interpreting Service on **131 450** and ask them to call Transport for NSW on **1800 684 490**. The interpreter will then assist you with translation.

For more information call **1800 684 490**,

Email [projects@transport.nsw.gov.au](mailto:projects@transport.nsw.gov.au) or visit [www.transport.nsw.gov.au/wahroonga](http://www.transport.nsw.gov.au/wahroonga)

For urgent enquiries or complaints regarding construction activities, please call our 24 hour Construction Response Line on **1800 775 465**