



# Transport Access Program

## Wollstonecraft Station Upgrade

### Project update

**August 2021**

Transport for NSW is upgrading Wollstonecraft Station to make it easier for everyone to access, including people with a disability or limited mobility, parents/carers with prams, and customers with luggage.

### Pause on construction

In line with recent restrictions introduced by the NSW Government on 17 July 2021 to help keep our communities safe, construction activities on Wollstonecraft Station Upgrade are paused until Friday 30 July 2021.

We are making arrangements for our work activities to safely recommence from 31 July 2021, as detailed in this notification. Should these restrictions change based on advice by the NSW Government, which may impact the timing of our work, the community will be notified. We encourage you to subscribe to our project email distribution for the latest information, by calling us on 1800 684 490 or emailing [projects@transport.nsw.gov.au](mailto:projects@transport.nsw.gov.au).

### Upcoming work

Work will continue in August and includes:

- bridge and lift landing work on the eastern entrance to Platform 1
- bridge work on the western entrance to Platform 2
- minor work on Shirley Road and the Shirley Road overbridge
- toilet refurbishment (one unisex toilet will remain open)
- delivering materials and removing spoil.

Equipment to be used includes trucks, excavators, jackhammers, grinders, cranes, rattle guns, plumbing tools, scaffolding, concrete trucks, pump trucks, dump trucks and hand tools.

### Night work in August 2021

From **6pm to 7am** on **Monday 2, Tuesday 3, Wednesday 4, and Thursday 5 August 2021**, work will take place during a Sydney Trains shutdown, when trains are not running.

Work will take place in the rail corridor, on the station platforms, and on Shirley Road, and includes:

- installation of anti-throw screens on new ramps off the Shirley Road overbridge
- installation of canopies and downpipes on the platform
- minor work to the new concrete on both platforms.

For more information call **1800 684 490**,

Email [projects@transport.nsw.gov.au](mailto:projects@transport.nsw.gov.au) or visit [transport.nsw.gov.au/wollstonecraft](https://transport.nsw.gov.au/wollstonecraft)

For urgent enquiries or complaints regarding construction activities, please call 24 hours **1800 775 465**.

Equipment to be used includes trucks, lighting towers, and powered hand tools. Traffic control and signage will be in place to assist pedestrians and motorists around the work area when required. The work activities will be noisy at times. We apologise for the inconvenience and will minimise the impact by turning off vehicles and equipment when not in use, using non-tonal reversing beepers and acoustic barriers, and monitoring noise levels to ensure adherence with approvals. Lighting towers will be solar powered to further reduce noise.

## Access changes during night work

There will be temporary changes to traffic, parking and pedestrian movements around the station while night work is carried out.

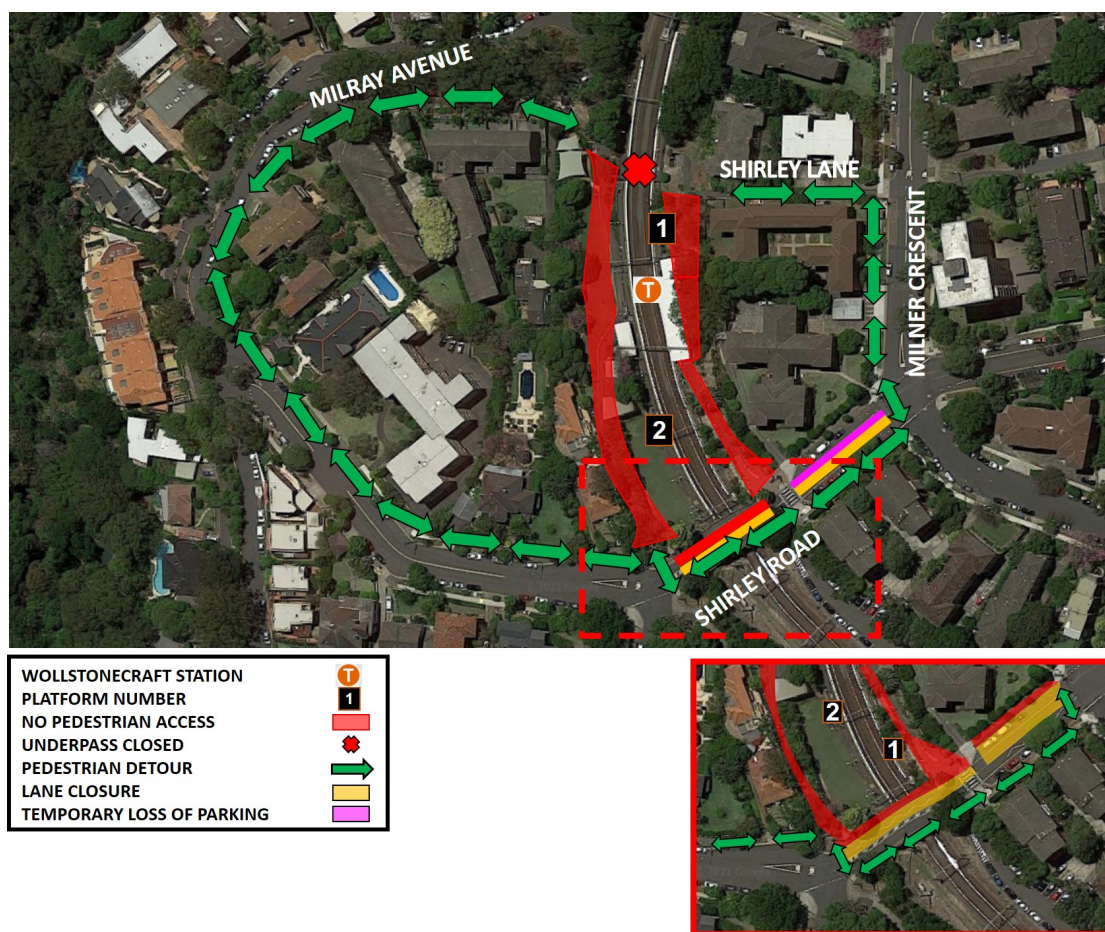
The **traffic changes** will include:

- one traffic lane will be closed on the Shirley Road overbridge. Traffic control will be in place to assist motorists, as stop/slow traffic arrangements may be intermittently in place.
- three parking spaces on Shirley Road will be temporarily closed to allow for delivery of materials.

The **pedestrian changes** will include:

- closure of all station access paths and the pedestrian underpass from **10pm to 5am each night on Monday 2, Tuesday 3, Wednesday 4, and Thursday 5 August 2021**. A pedestrian detour will be in place via Shirley Road, Milray Avenue, and Milner Crescent. Signage and traffic control will be in place to direct pedestrians. A map showing these changes is provided below.

Please allow extra travel time and follow the instructions of traffic control staff and signage while this work is carried out. Please see the map below outlining these impacts and detours. Please contact 131 500 for the latest information regarding train replacement services.



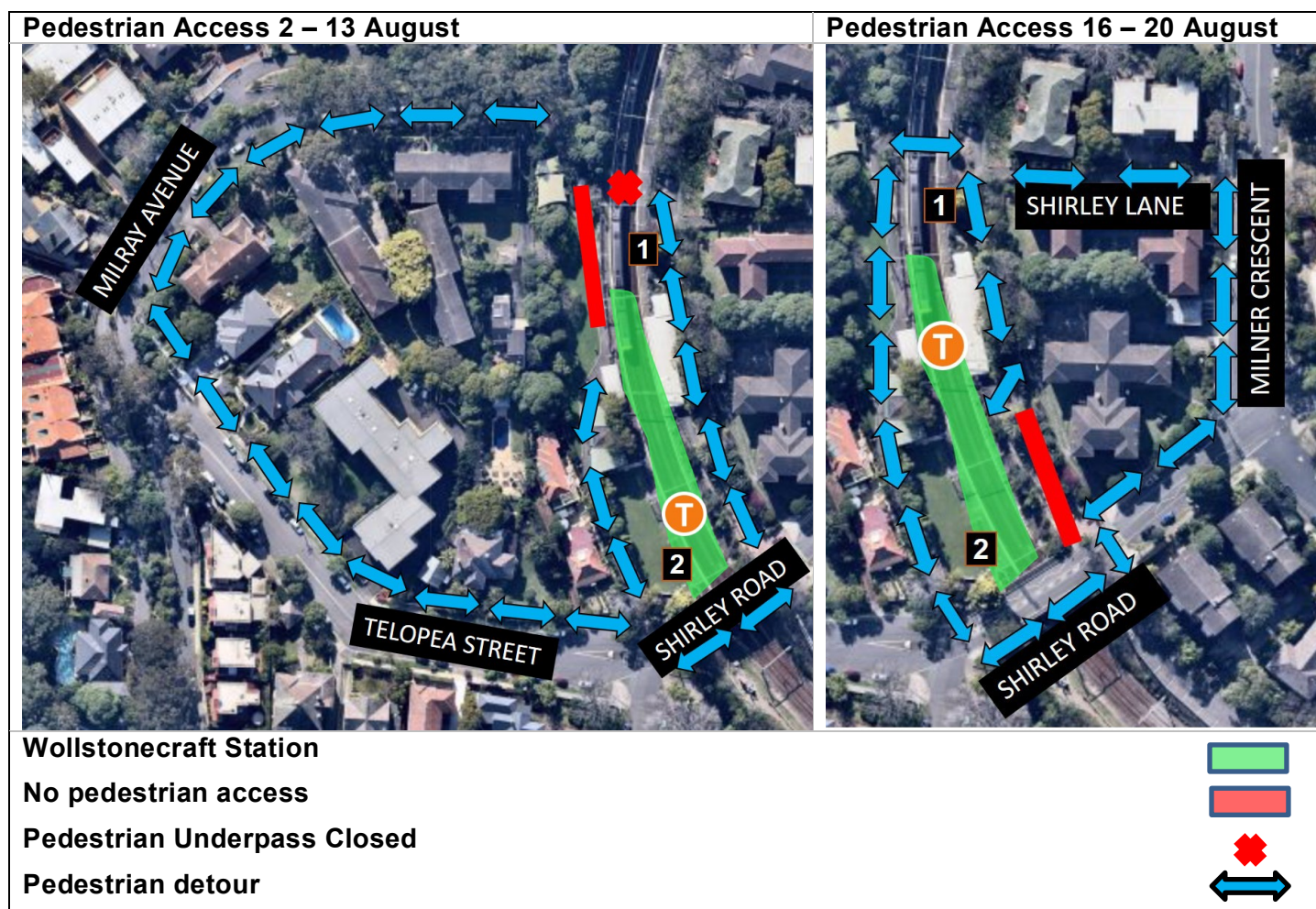


## Temporary pedestrian access changes during August 2021

From **5am Monday 2 August to 6pm Friday 13 August**, the entrance to Platform 2 from Milray Avenue will be temporarily closed. This will include the pedestrian underpass. Access to businesses on Platform 2 will be maintained. Access to Platform 2 and the businesses will be available via Shirley Road.

From **5am Monday 16 August to 6pm Friday 20 August**, the entrance to Platform 1 from Shirley Road will be temporarily closed. Access to businesses on Platform 1 will be maintained. Access to Platform 1 and the business will be available via Shirley Lane or via the underpass via the other station entry.

Customers will be required to follow pedestrian detour routes. Traffic control and signage will be in place to assist pedestrians while these changes are in place.



## Temporary closure of Platform 2 waiting room

Work to re-tile and re-level the Platform 2 waiting room will occur between Monday 2 August and Friday 6 August. During this period, the waiting room will be closed to customers. We apologise for any inconvenience.

## Temporary changes to the station toilets

Work is underway to refurbish the existing toilets at Wollstonecraft Station to provide one family accessible toilet and two ambulant toilets. While work is carried out to enable the refurbishments, one toilet will be closed and one toilet will be converted to a unisex toilet for all customers to use. Signage is in place to direct customers to the unisex toilet.

## Construction hours

Standard construction hours are **7am to 6pm Monday to Friday** and **8am to 1pm on Saturdays**.

For the safety of staff, rail customers and the community, some work will be completed outside standard construction hours. Nearby residents and businesses will be notified before any work outside these hours takes place.

## Keep in touch

We will continue to keep the community informed with regular project notifications and updates on the project website [www.transport.nsw.gov.au/wollstonecraft](http://www.transport.nsw.gov.au/wollstonecraft).

If you would like to be added to the project distribution list, or for more information on the Wollstonecraft Station Upgrade, please contact us on **1800 684 490** or email [projects@transport.nsw.gov.au](mailto:projects@transport.nsw.gov.au).

For urgent enquiries or complaints regarding construction activities, please call our 24 -hour Construction Response Line on **1800 775 465**.



This document contains important information about public transport projects in your area. If you require the services of an interpreter, please contact the Translating and Interpreting Service on **131 450** and ask them to call Transport for NSW on **(02) 9200 0200**. The interpreter will then assist you with translation.