



Transport Access Program

Wollstonecraft Station Upgrade

Project update

June 2021



Artist's impression of Wollstonecraft Station Upgrade, subject to detailed design.

Transport for NSW is upgrading Wollstonecraft Station to make it easier for everyone to access, including people with a disability or limited mobility, parents/carers with prams, and customers with luggage.

Upcoming work

Work will continue in June and includes:

- electrical upgrades on Platform 1
- regrading and resurfacing both platforms
- delivering materials and removing spoil
- bridge and lift landing work on the eastern entrance to Platform 1
- temporary closure of the northern entrance to Platform 1, the underpass and Shirley Lane for drainage work (shop access will be maintained at all times outside of weekend possessions)
- toilet refurbishment (one unisex toilet will remain open)
- delivery of structural steel and reinforcement.

For more information call **1800 684 490**,

Email projects@transport.nsw.gov.au or visit transport.nsw.gov.au/wollstonecraft

For urgent enquiries or complaints regarding construction activities, please call 24 hours **1800 775 465**.

Equipment to be used includes excavators, trucks, demolition saws, grinders, hydraulic hammers, cranes, rattle guns, plumbing tools, scaffolding, demolition tools, pallet jacks, concrete trucks, pump trucks, dump trucks and hand tools.

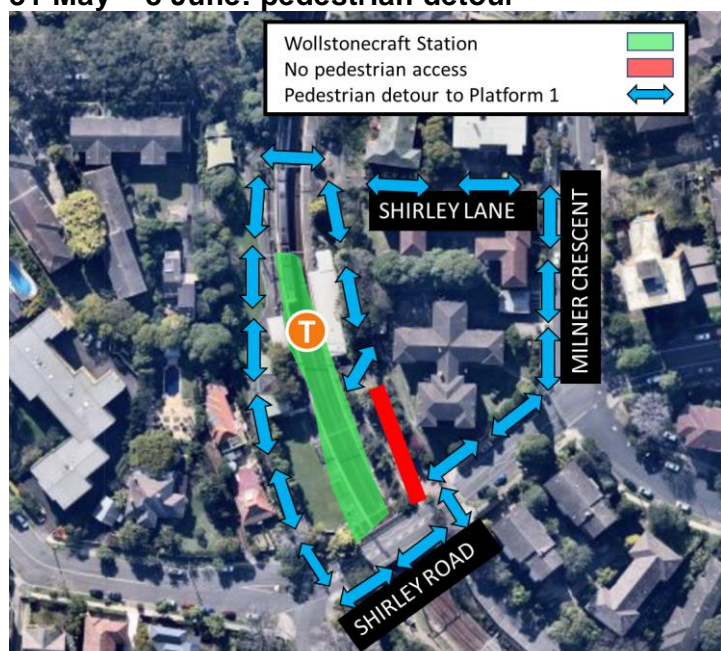
Temporary pedestrian access changes during June 2021

From **10pm Friday 31 May to 5am Tuesday 8 June**, the entrance to Platform 1 from Shirley Road will be temporarily closed. This closure will enable the safe installation of scaffolding around the lift on Platform 1, as well as excavation and installation of new drainage.

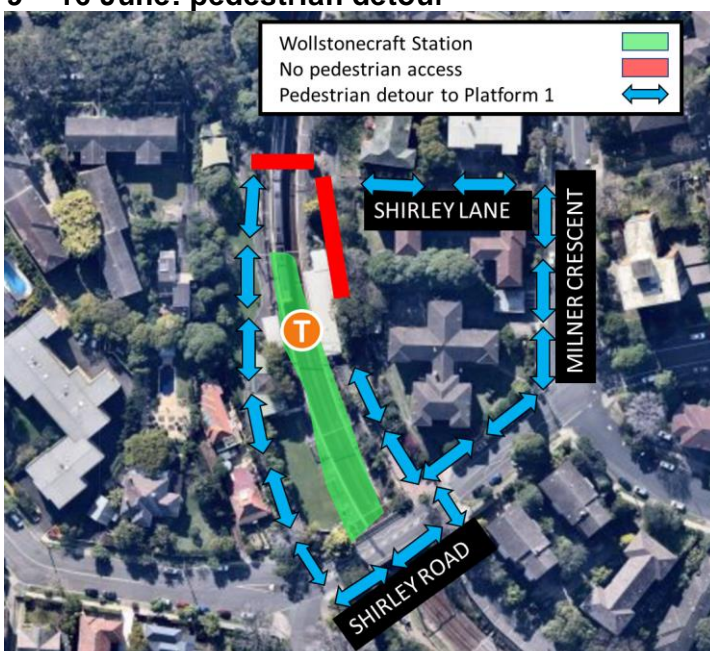
From **10pm Wednesday 9 June to 5pm Wednesday 16 June**, the entrance to Platform 1 from Shirley Lane and to the pedestrian underpass will be temporarily closed. This closure will enable ongoing excavation and installation of new drainage.

To access the station platforms, customers and pedestrians will be required to follow the detour route shown in the map below. Traffic control and signage will be in place to assist pedestrians while these changes are in place. **Access to the station shops will be maintained at all times.**

31 May – 8 June: pedestrian detour



9 – 16 June: pedestrian detour



Weekend work in June

For the safety of our workers, pedestrians and motorists, work will take place from **10pm Friday 4 June to 5am Monday 7 June 2021**.

Some of this work will take place in the rail corridor and needs to be carried out during a scheduled Sydney Trains track work period when trains aren't running.

Work will include:

- regrading and resurfacing work on Platforms 1 and 2
- drainage work around the lift shaft on Platform 1
- delivery of structural steel for the and Platform 2 canopy

Equipment to be used includes excavators, elevated work platform, cranes, demolition and wall saws, concrete trucks and pumps, dump trucks, demolition hammers, rollers, lighting towers, concrete vibrators, rock breakers and hand tools.

This work will be noisy at times. Wherever possible, measures to reduce noise will be implemented including scheduling noisy work during daytime hours, turning off vehicles and equipment when not in use, monitoring noise, using non-tonal reversing beepers and acoustic barriers.

We apologise for the inconvenience and thank you for your patience during this important work.

Please visit www.transportnsw.info or call **131 500** for up to date information regarding service updates and replacement buses during this time.

Access changes during weekend work

There will be temporary changes to traffic, parking and pedestrian movements around the station while weekend work is carried out.

The **traffic changes** will include:

- From **10pm Friday 4 June to 12am Monday 7 June**, the bus stop on Milner Crescent near Shirley Lane will be relocated 20m south towards Shirley Road.
- A concrete truck will be parked on Milner Crescent in front of Shirley Lane. Traffic control will be in place to assist motorists. Pedestrian access for residents along Milner Crescent will be maintained.

The **pedestrian changes** will include:

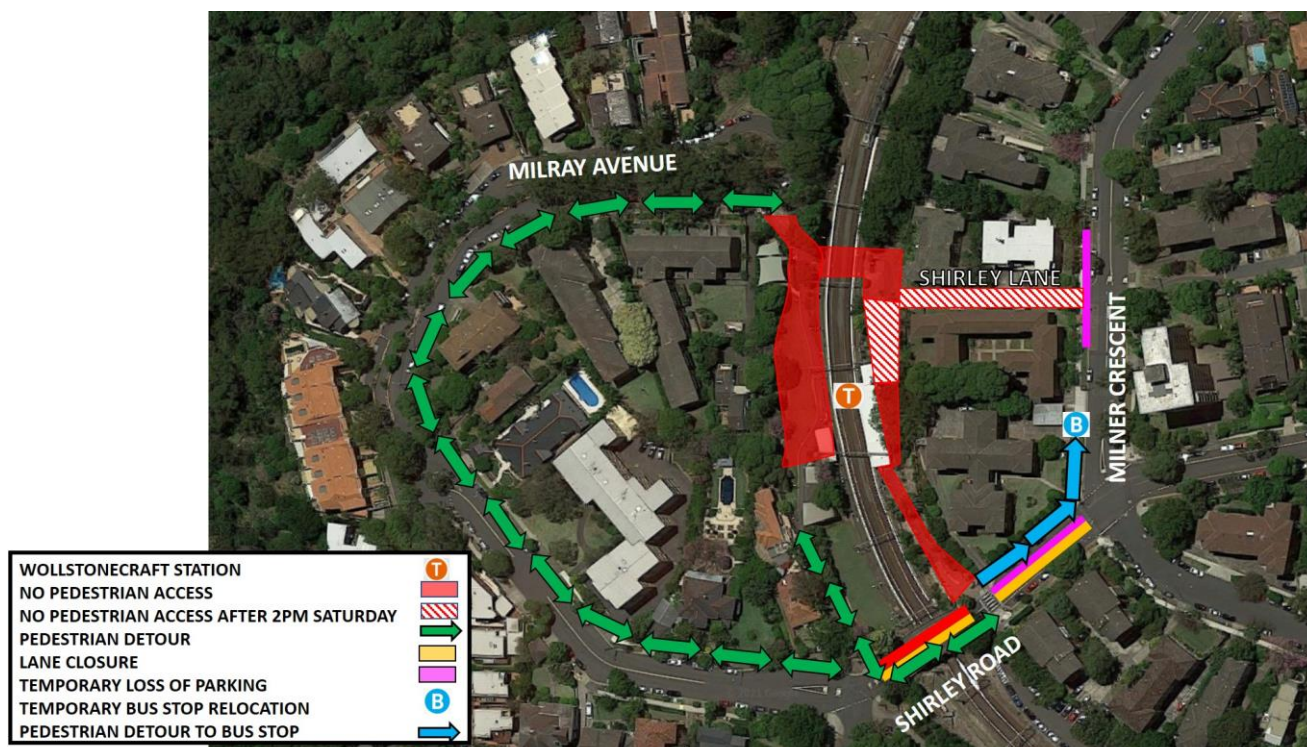
- Pedestrian access to the station will be closed from the underpass and from Shirley Lane at Milner Crescent. Shirley Lane will be closed, however safe access for residents will be maintained at all times.

The **parking changes** will include:

- Two parking spaces on Milner Crescent will be temporarily closed to allow for a temporary bus stop.

Please allow extra travel time and follow the instructions of traffic control staff and signage while this work is carried out. Please see the maps overleaf outlining these impacts and detours.

Location Map



Temporary changes to the station toilets

Work is in progress to refurbish the existing toilets at Wollstonecraft Station to provide one family accessible toilet and two ambulant toilets.

While work is carried out to enable the refurbishments, one toilet will be closed and one toilet will be converted to a unisex toilet for all customers to use. Signage is in place to direct customers to the unisex toilet.

Landscaping Update

To allow for the installation of a new electrical cabinet near the Shirley Road entrance to Platform 1, a Cabbage Leaf Palm was temporarily removed with the aim of replanting it in the same area once the construction is complete. Unfortunately, and despite the best efforts of the project team and our arborists, it is unlikely that the Cabbage Leaf Palm will be able to be transplanted into a new location.

Construction hours

Standard construction hours are **7am to 6pm Monday to Friday** and **8am to 1pm on Saturdays**.

For the safety of staff, rail customers and the community, some work will be completed outside standard construction hours. Nearby residents and businesses will be notified before any work outside these hours takes place.

Keep in touch

We will continue to keep the community informed with regular project notifications and updates on the project website www.transport.nsw.gov.au/wollstonecraft.

If you would like to be added to the project distribution list, or for more information on the Wollstonecraft Station Upgrade, please contact us on **1800 684 490** or email projects@transport.nsw.gov.au.

For urgent enquiries or complaints regarding construction activities, please call our 24 -hour Construction Response Line on **1800 775 465**.

Traditional Chinese

這份文件包含你所在地區公共交通工程項目的重要信息。如果你需要傳譯服務，請致電翻譯與傳譯服務機構，電話 131 450，要求他們為你接通交通部(Transport for NSW)，電話是 1800 684 490。傳譯員會為你做翻譯。

Japanese

本文書には貴方のお住まいの地域の公共交通機関プロジェクトに関する重要なお知らせが含まれています。通訳サービスが必要な場合は、翻訳・通訳サービス (Translating and Interpreting Service) 131 450 までお電話いただき、NSW 交通局 (Transport for NSW) 1800 684 490 宛にお電話するようお願いください。通訳者が通訳のお手伝いをいたします。

Spanish

El presente documento contiene información importante sobre proyectos de transporte público en su área. Si requiere los servicios de un intérprete, llame al Translating and Interpreting Service al 131 450 y pídale que llamen a **Transport for NSW**, teléfono: 1800 684 490. Luego el intérprete le ayudará con la traducción.



This document contains important information about public transport projects in your area. If you require the services of an interpreter, please contact the Translating and Interpreting Service on **131 450** and ask them to call Transport for NSW on **(02) 9200 0200**. The interpreter will then assist you with translation.