



# Transport Access Program

## Wollstonecraft Station Upgrade

Project update

July 2021



*Updated artist's impression of Wollstonecraft Station Upgrade*

### Design update

Transport for NSW has worked to design a station upgrade which responds to the DSAPT (Disability Standards for Accessible Public Transport) accessibility requirements, whilst maintaining the village feel.

The design has been refined to integrate more sympathetically with the existing streetscape. Changes to the design include detailing of lift canopies and reduction of shaft height, reduction to anti-throw screen heights, increased landscaping and material palettes to reduce overall visual impacts to the precinct.

There are some unavoidable visual impacts such as the lift shafts and anti-throw screens which are designed the way they are for safety reasons, however an effort has been made to reduce the visual impact of these as much as possible.

For more information call **1800 684 490**,

Email [projects@transport.nsw.gov.au](mailto:projects@transport.nsw.gov.au) or visit [transport.nsw.gov.au/wollstonecraft](https://transport.nsw.gov.au/wollstonecraft)

For urgent enquiries or complaints regarding construction activities, please call 24 hours **1800 775 465**.

## Upcoming work

Work will continue in July and includes:

- electrical upgrades on Platform 1
- regrading and resurfacing both platforms
- delivering materials and removing spoil
- bridge and lift landing work on the eastern entrance to Platform 1
- temporary closure of the northern entrance to Platform 1, the underpass and Shirley Lane for drainage work (shop access will be maintained at all times outside of weekend possessions)
- toilet refurbishment (one unisex toilet will remain open)

Equipment to be used includes excavators, trucks, demolition saws, grinders, hydraulic hammers, cranes, rattle guns, plumbing tools, scaffolding, demolition tools, pallet jacks, concrete trucks, pump trucks, dump trucks and hand tools.

## Temporary pedestrian access changes during June/July 2021

From **5am Monday 28 June to 6pm Friday 16 July**, the entrance to Platform 1 from Shirley Road will be temporarily closed. Access to businesses on Platform 1 will be maintained. Access to Platform 1 will be available via Shirley Lane or via the underpass via the other station entry.

From **5am Monday 19 July to 6pm Friday 23 July**, the entrance to Platform 2 from Shirley Road will be temporarily closed. Access to businesses on Platform 2 will be maintained. Access to Platform 2 will be available via the Milray Avenue or the underpass via the other station entry.

From **5am Monday 26 July to 6pm Friday 6 August**, the entrance to Platform 2 from Milray Avenue will be temporarily closed. Access to businesses on Platform 2 will be maintained. Access to Platform 2 will be available via Shirley Road, or the underpass via the other station entry.

Customers will be required to follow pedestrian detour routes. Traffic control and signage will be in place to assist pedestrians while these changes are in place.



## Temporary changes to the station toilets

Work is in progress to refurbish the existing toilets at Wollstonecraft Station to provide one family accessible toilet and two ambulant toilets.

While work is carried out to enable the refurbishments, one toilet will be closed and one toilet will be converted to a unisex toilet for all customers to use. Signage is in place to direct customers to the unisex toilet.

## Weekend work in July

From **6pm on Friday 2 July to 5am Monday 5 July 2021**, and from **6pm Friday 9 July to 5am Monday 12 July 2021** work will take place continuously during Sydney Trains trackwork weekends, when trains are not running.

Work will include:

- regrading and resurfacing work on Platforms 1 and 2
- electrical work in the station buildings.

Equipment to be used includes excavators, elevated work platform, cranes, demolition and wall saws, concrete trucks and pumps, dump trucks, demolition hammers, rollers, lighting towers, concrete vibrators, rock breakers and hand tools.

This work will be noisy at times. Wherever possible, measures to reduce noise will be implemented including scheduling noisy work during daytime hours, turning off vehicles and equipment when not in use, monitoring noise, using non-tonal reversing beepers and acoustic barriers.

Businesses on Platform 1 at Wollstonecraft Station will be closed on both weekends. We apologise for the inconvenience and thank you for your patience during this important work.

Please visit [www.transportnsw.info](http://www.transportnsw.info) or call **131 500** for up to date information regarding service updates and replacement buses during this time.

## Access changes during weekend work

There will be temporary changes to traffic, parking and pedestrian movements around the station while weekend work is carried out.

The **traffic changes** will include:

- Concrete trucks will be parked on Shirley Road near the overbridge. Traffic control will be in place to assist motorists, as stop/slow traffic arrangements may be intermittently in place.

The **pedestrian changes** will include:

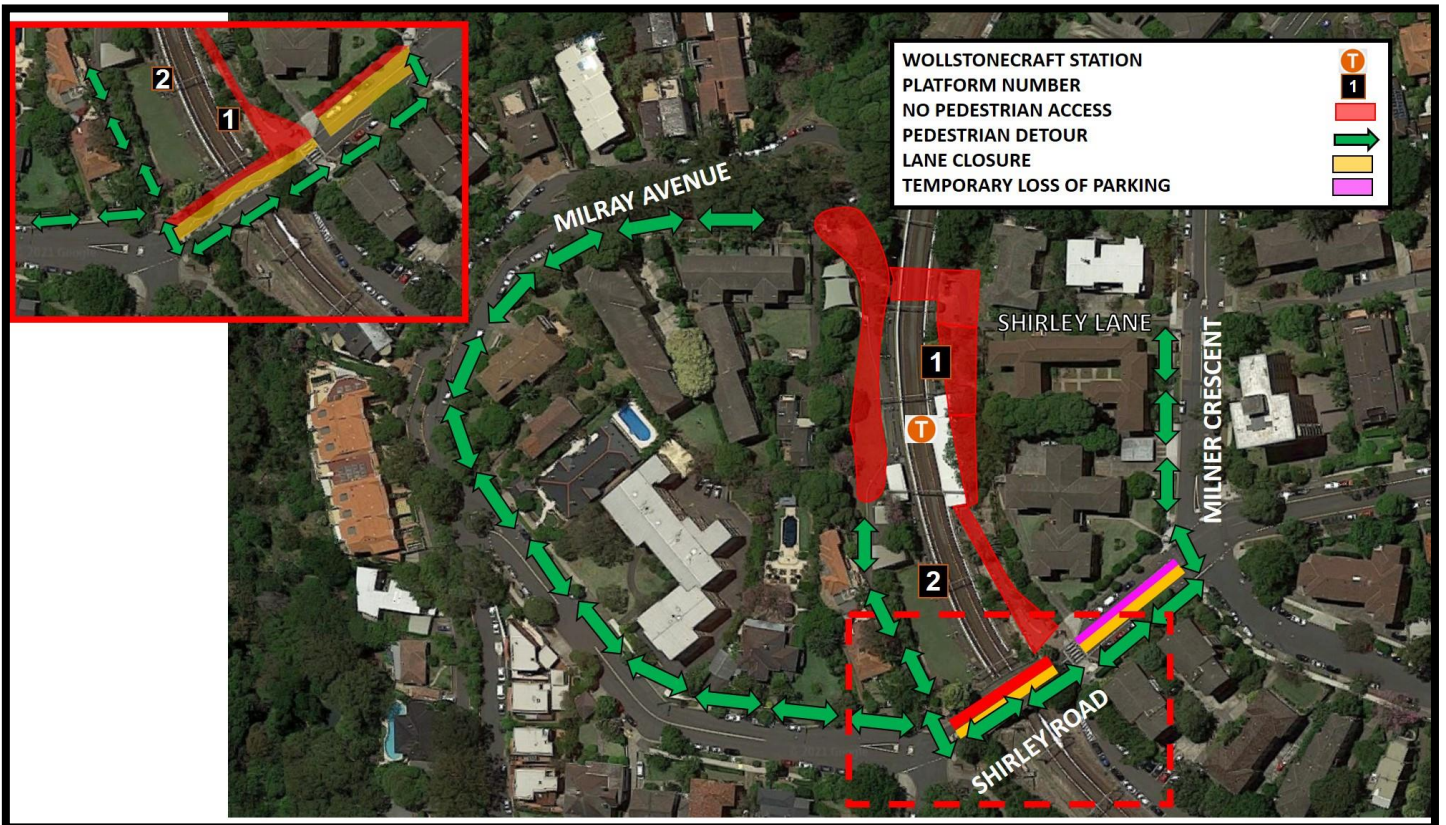
- Pedestrian access to and through the station will be closed from Shirley Road, Shirley Lane and from Milray Avenue. Pedestrian access for residents will be maintained.

The **parking changes** will include:

- Two parking spaces on Shirley Road will be temporarily closed to allow for delivery of materials.

Please allow extra travel time and follow the instructions of traffic control staff and signage while this work is carried out. Please see the map below outlining these impacts and detours.

# Location Map



Location map showing access changes to Wollstonecraft Station. Inset map: One lane of the Shirley Road Bridge will remain open for traffic.

## Construction hours

Standard construction hours are **7am to 6pm Monday to Friday** and **8am to 1pm on Saturdays**.

For the safety of staff, rail customers and the community, some work will be completed outside standard construction hours. Nearby residents and businesses will be notified before any work outside these hours takes place.

## Keep in touch

We will continue to keep the community informed with regular project notifications and updates on the project website [www.transport.nsw.gov.au/wollstonecraft](http://www.transport.nsw.gov.au/wollstonecraft).

If you would like to be added to the project distribution list, or for more information on the Wollstonecraft Station Upgrade, please contact us on **1800 684 490** or email [projects@transport.nsw.gov.au](mailto:projects@transport.nsw.gov.au).

For urgent enquiries or complaints regarding construction activities, please call our 24 -hour Construction Response Line on **1800 775 465**.



This document contains important information about public transport projects in your area. If you require the services of an interpreter, please contact the Translating and Interpreting Service on **131 450** and ask them to call Transport for NSW on **(02) 9200 0200**. The interpreter will then assist you with translation.