

Woodbrook Road rail underpass

Have your say on plans to reopen the underpass

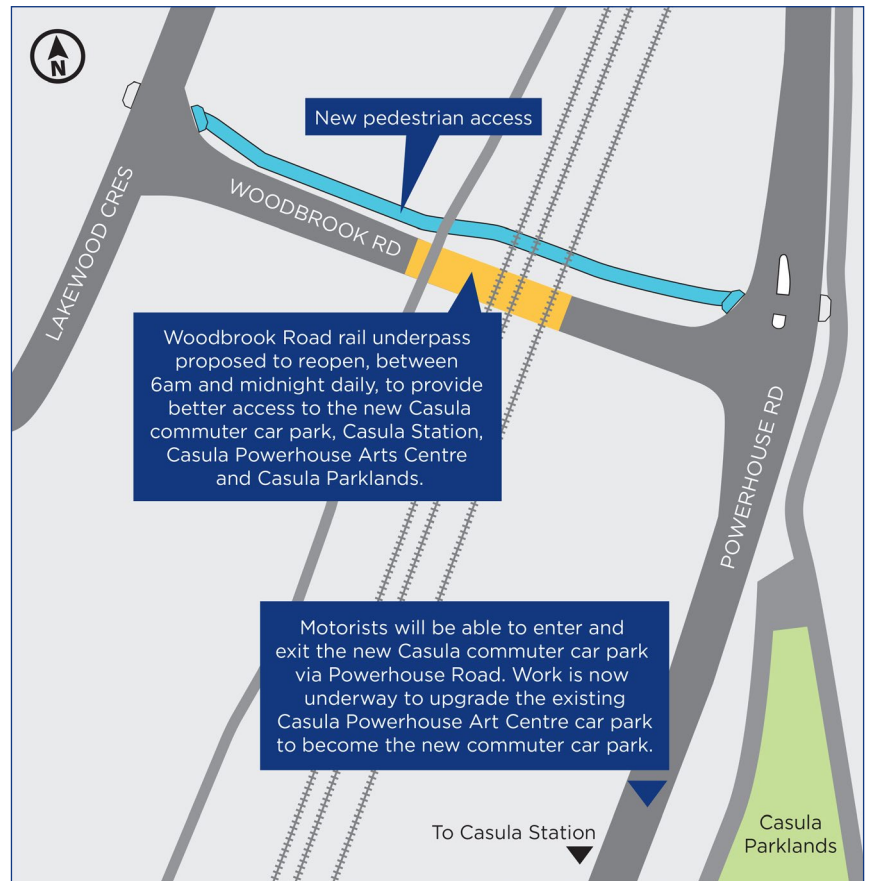
Transport for NSW is working in partnership with Liverpool City Council to upgrade the existing Casula Powerhouse Arts Centre car park to provide around 65 new commuter parking spaces.

A new visitor car park for the Casula Powerhouse Arts Centre with 76 spaces is also being built north of the centre by Liverpool Council. The Casula commuter car park project is part of the NSW Government's Commuter Car Park Program, providing you with more convenient access to public transport at key interchanges and helping to ease congestion on our roads.

Reopening the Woodbrook Road underpass

Transport for NSW and Liverpool City Council plan to reopen the existing rail underpass at Woodbrook Road to traffic and pedestrians. The underpass and commuter car park will be open to the public between 6am and midnight every day. This would provide better access to the new commuter car park, Casula Station, Casula Powerhouse Arts Centre and Casula Parklands.

Subject to approvals, the Woodbrook Road rail underpass would reopen in early 2022.



Indicative design only, subject to design finalisation.

We want your feedback

Transport for NSW and Liverpool Council invites the community to provide feedback on the reopening of the Woodbrook Road underpass.

Please send us your feedback by **7 November 2021**.

To view the new concept design, please scan the QR code or visit www.transport.nsw.gov.au/casula



Feedback can be submitted by:

- emailing projects@transport.nsw.gov.au
- completing the feedback form at www.transport.nsw.gov.au/casula

Transport for NSW and Liverpool Council will consider all feedback and continue to update the community when a decision has been made.



This document contains important information about public transport projects in your area. If you require the services of an interpreter, please contact the Translating and Interpreting Service on **131 450** and ask them to call Transport for NSW on **1800 684 490**. The interpreter will then assist you with translation.