



# Transport Access Program

## Yagoona Station Upgrade

**Project update**

**October 2021**

Work is continuing at Yagoona Station and the safety and wellbeing of our workforce and the wider community is our highest priority. These works are in line with the current Public Health Orders and a COVID-19 Safe plan is in place, including masks and QR codes.

Should these restrictions change based on advice by the NSW Government, which may impact the timing of our work, the community will be notified. We encourage you to subscribe to our project email distribution for the latest information, by calling us on 1800 684 490 or emailing [projects@transport.nsw.gov.au](mailto:projects@transport.nsw.gov.au).

### Upcoming work

In October 2021 our activities will include:

- site survey and investigations
- installation and relocation of electrical, communication and CCTV services in and around the station
- installation of electrical and water services on the platform
- concreting work within the station
- vegetation removal
- concrete works for the lift shaft and new concourse foundations
- stockpile management and material removal from within the rail corridor.

Equipment to be used includes surveying equipment, cranes, trucks, concrete pumps, power and hand tools.

### Weekend & Night work

Work on the station platform will be carried out on the following weekends and will include:

Date	Work
<b>10pm Monday 11 October to 6am Tuesday 12 October 2021</b>	<ul style="list-style-type: none"><li>• Delivery of structural steel by crane to Breasley Place car park</li></ul>
<b>2am Saturday 16 October to 2am Monday 18 October 2021</b>	<ul style="list-style-type: none"><li>• Excavation for the new platform building and services</li><li>• Delivery of materials</li></ul>
<b>2am Saturday 23 October to 2am Monday 25 October 2021</b>	<ul style="list-style-type: none"><li>• Excavation for the new platform building and services</li><li>• Installation of precast platform extension and concreting</li></ul>

A crane will be set up in the Breasley Place car park on 16 and 17 October to lift materials into the rail corridor.

Equipment to be used includes piling rigs, trucks, concrete pumps and mixers, excavators, cranes, power tools and hand tools.

This work will occur during a scheduled Sydney Trains trackwork period, when the station is closed and trains are not running. For information about rail replacement buses, please visit [transportnsw.info](https://transport.nsw.info) or phone **131 500**.

## Parking changes

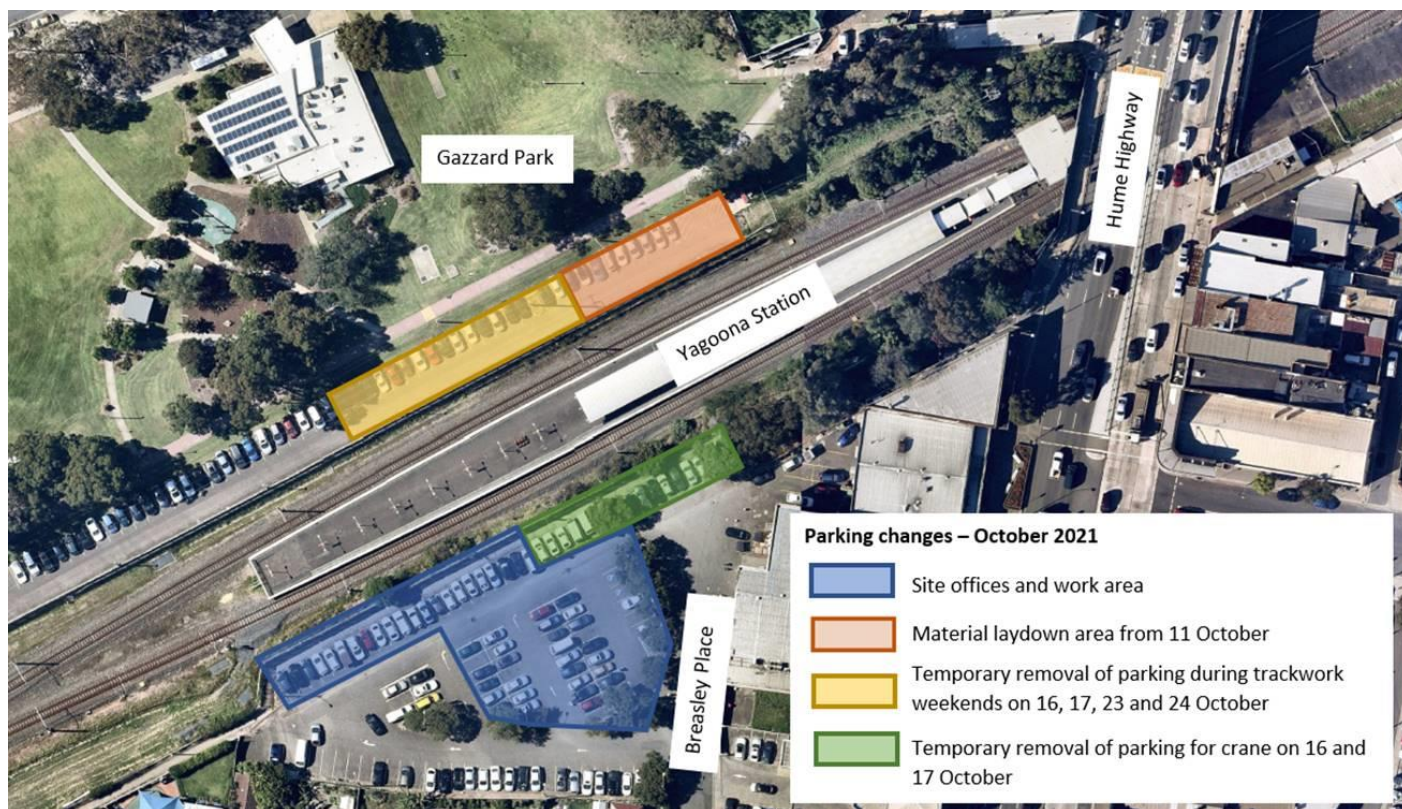
**Temporary parking changes in the Breasley Place car park will remain in place for the duration of the project** to maintain a safe area to preassemble the new station platform and prefabricate structural steel for the station upgrade.

**An additional 15 parking spaces in the Breasley Place car park will be temporarily closed on 16 and 17 October 2021** for use of a crane to lift materials into the rail corridor.

Traffic control will be in place in and around Breasley Place car park to allow materials to be delivered safely. Please follow the direction of signs and traffic controllers at all times.

**Nine parking spaces will be temporarily closed at the car park adjacent to Gazzard Park**, off Ritchie Road, from **Monday 11 October 2021** to establish a material laydown area. During this time, two accessible parking spaces will be relocated and a temporary ramp installed to maintain access to the footpath at all times.

**An additional 20 parking spaces will also be temporarily closed** at this car park during planned Sydney Trains trackwork weekends on **16 and 17 October and 23 and 24 October 2021** when the station is closed.



## Construction hours

**Standard construction hours are from 7am to 6pm every day**, including public holidays.

We understand extending construction hours to include weekends and public holidays may cause disruption. We will minimise impacts where possible and ensure strict environmental conditions relating to noise, vibration and dust management are adhered to.

Where weekend and night work is required, measures will be implemented to minimise the disturbance wherever possible, such as turning off vehicles when not in use, positioning construction equipment as far away from residential areas as possible, using non-tonal reversing beepers, and monitoring noise levels.

## Keep in touch

We will continue to keep the community informed with regular project notifications and frequent updates published to the project website [transport.nsw.gov.au/yagoona](https://transport.nsw.gov.au/yagoona). If you would like to be added to the project distribution list or for more information, please contact [projects@transport.nsw.gov.au](mailto:projects@transport.nsw.gov.au) or call the Project Infoline on **1800 684 490**.

### Chinese

这份文件包含你所在地区公共交通工程项目的重要信息。如果你需要传译服务，请致电翻译与传译服务机构，电话 131 450，要求他们为你接通交通工程部 (Transport for NSW)，电话是 1800 684 490。传译员会为你做翻译。

### Greek

Το παρόν έγγραφο περιέχει σημαντικές πληροφορίες σχετικά με δημόσια έργα μεταφορών στην περιοχή σας. Αν χρειάζεστε τις υπηρεσίες διερμηνέα, παρακαλούμε επικοινωνήστε με την Υπηρεσία Μεταφράσεων και Διερμηνείας στο 131 450 και ζητήστε τους τηλεφωνήσουν στις Συγκοινωνίες στη ΝΝΟ στο 1800 684 490. Ο διερμηνέας θα σας βοηθήσει στη συνέχεια με τη μετάφραση.

### Vietnamese

Tài liệu này có các thông tin quan trọng về các dự án giao thông công cộng trong khu vực của quý vị. Nếu quý vị cần sự giúp đỡ của thông dịch viên, xin vui lòng liên hệ với Dịch vụ Thông Phiên Dịch ở số điện thoại 131 450 và yêu cầu họ gọi cho Cơ quan Giao thông Tiểu bang NSW ở số điện thoại 1800 684 490. Sau đó thông dịch viên sẽ giúp thông dịch cho quý vị.

### Arabic

تتضمن هذه الوثيقة معلومات عن مشاريع النقل العام منطقتكم. إذا كنتم بحاجة إلى خدمات مترجم، في الرجاء الإتصال بخدمة الترجمة الشفهية والخطية على رقم 131 450 واطلبوا منهم ان يتصلوا بمصلحة 1800 684 490 الموصلات في نيو ساوث ويلز على رقم عندها يساعدكم المترجم بالترجمة.



This document contains important information about public transport projects in your area. If you require the services of an interpreter, please contact the Translating and Interpreting Service on **131 450** and ask them to call Transport for NSW on **1800 684 490**. The interpreter will then assist you with translation.