

Hornsby Commuter Car Park

Project Update

Transport for NSW | July 2022

What's happening in July?

In July, our work on the new commuter car park in Hornsby will include:

- bulk excavation
- removal of existing asphalt
- electrical conduit installation
- stormwater drain and pipe installation
- survey and investigation of existing services
- trenching in footpaths along Peats Ferry Road
- demolition and construction of new pedestrian footpath at Jersey Street
- installation of electrical infrastructure along Jersey Street and Peats Ferry Road.



Artist's impression

Our work schedules

We will be on site from **Monday to Friday from 7am to 6pm** and on **Saturdays from 8am and 1pm**.

We will contact you to advise of any work required outside of these hours.

Temporary changes to parking

We will be carrying out upgrade works on the pedestrian footpath at Jersey Street from **Monday 11 July**.

Around 22 on-street parking spaces will be temporarily unavailable for four weeks while this work takes place.

Alternative parking will be available at Westfield Hornsby for commuter parking.

Keeping you up to date

We will keep you informed about the project through notifications to our customers, residents and businesses.

For more information, please visit our project website at: transport.nsw.gov.au/projects

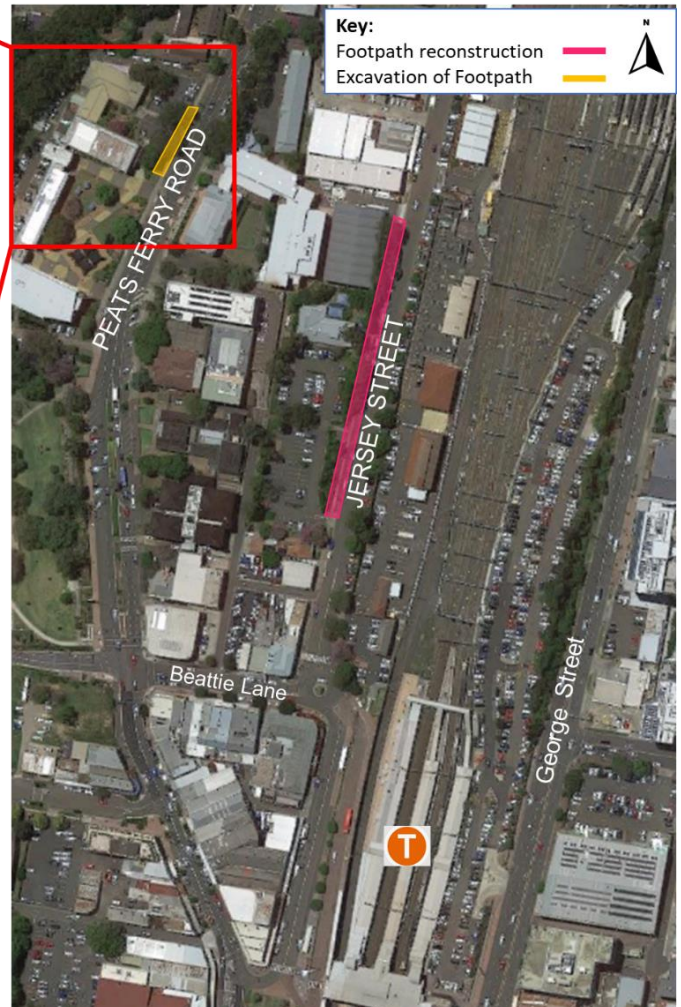
How will our work affect you?

There will be a partial road closure along Jersey Street from **Monday 4 July to Friday 8 July**, weather permitting, with traffic controllers in place.

Our work may be noisy at times, we have included measures to reduce the impact of this noise, including turning equipment off when not in use and using non-tonal reversing beepers for trucks used on the site.

The equipment used during the work will include vacuum trucks, excavators, surveying equipment, spoil removal trucks and hand tools.

Hornsby Commuter Car Park



Contact us

If you have any questions or would like more information on the Hornsby Commuter Car Park, please contact our project team:



1800 684 490



projects@transport.nsw.gov.au



www.transport.nsw.gov.au/projects



If you need help understanding this information, please contact the Translating and Interpreting Service on 131 450 and ask them to call us on 1800 684 490.