



December 2022 – February 2023

# Regional Rail

## Mindyarra Maintenance Centre

### Community Notification

We are replacing the ageing NSW regional rail fleet of XPT, XPLOER and Endeavour trains. The new trains will provide improved safety, accessibility, facilities and reliability for customers who travel from many NSW regional centres to Sydney, as well as Canberra, Melbourne and Brisbane.

To support the new fleet, a purpose-built maintenance centre is being constructed in Dubbo. Momentum Trains is delivering the Regional Rail Project on behalf of Transport for NSW.

### Upcoming work December 2022 – February 2023

Construction work continues at **Mindyarra Maintenance Centre**, located off **Wingewarra Street**, during standard construction hours, **7am to 6pm Monday to Friday** and **8am to 1pm Saturday**.

Activities will include detailed excavation, pavement construction, landscaping, track work, weed spraying, concreting, drainage work, installation of underground services, block work, cladding and structural steel installation.

Concrete finishing work may occasionally need to continue past 6pm. This work is subject to strict controls and is not expected to be noisy or disruptive. We expect this work to be completed before 8pm, however, in some circumstances, work may progress past this time to ensure the concrete finishing work can be completed using hand tools.

### Out of Hours work

Some construction activities have been scheduled to take place outside standard working hours, from **7am to 8am** and **1pm to 6pm** on **Saturdays** and **8am to 6pm** on **Sundays** (excluding public holidays). This work is not expected to be noisy or disruptive.

**No construction work is scheduled for the Christmas shutdown period, 24 December 2022 to 8 January 2023.**

### What you may notice

Heavy machinery and mobile cranes will continue to operate on-site.

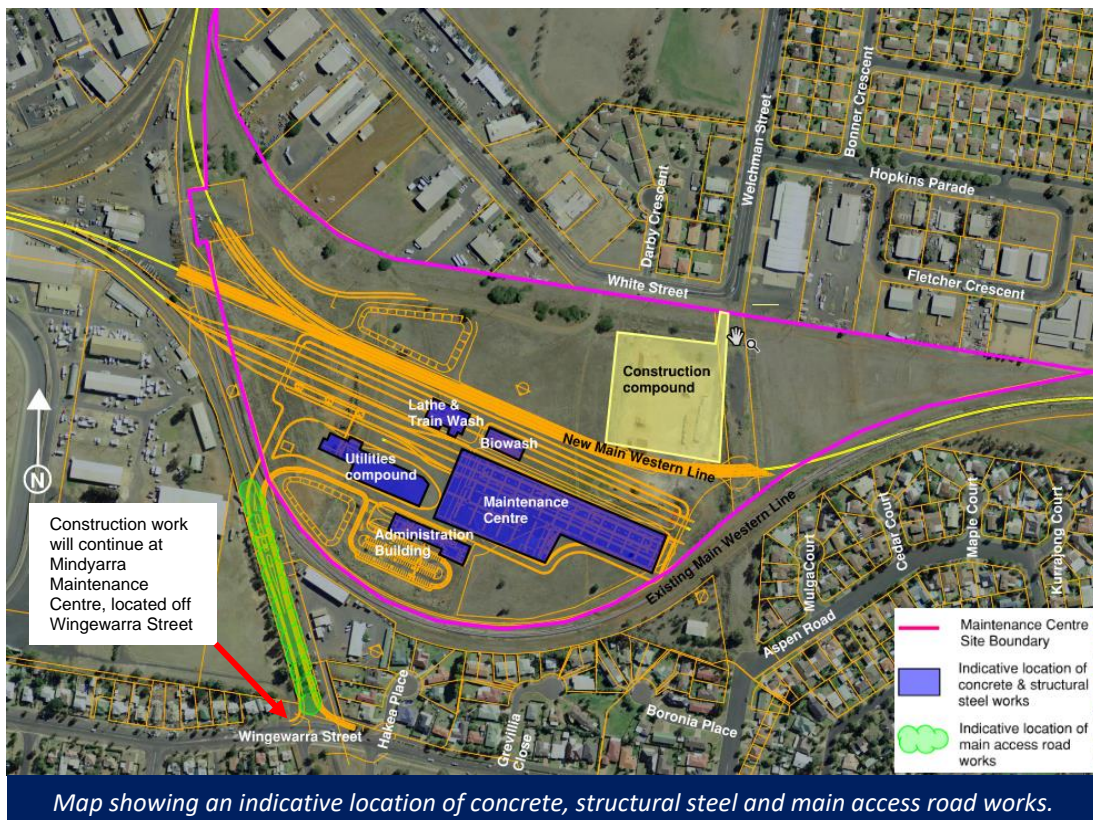
There will be deliveries of materials such as concrete, pipes, switch rooms, cabling, formwork, steel reinforcement, sleepers, rail track and structural steel. Deliveries will arrive directly from the train network, or via our construction compound off White Street, or from the centre's main access on Wingewarra Street.

Equipment to be used includes, but is not limited to:

- hand tools
- heavy and light vehicles
- dump trucks
- rollers and graders
- mobile cranes
- concrete trucks and pumps
- welding equipment
- ballast tamper
- vacuum trucks
- skid steer loader
- rail saw and grinder
- ballast regulator
- excavators
- loaders
- trucks and trailers
- street sweeper
- water carts

Transport for NSW is committed to minimising disruption to the community. We will take every possible step to reduce the impact of our work and apologise for any disruption these activities may cause.

## Map of work area



Map showing an indicative location of concrete, structural steel and main access road works.

## More information

Working closely and effectively with the local community is a priority for Transport for NSW and Momentum Trains. We will keep you up to date about upcoming work, with regular notifications and updates on our website.

If you have questions or concerns or would like more information about the Regional Rail Project, please contact **1800 684 490**, email [projects@transport.nsw.gov.au](mailto:projects@transport.nsw.gov.au) or visit [transport.nsw.gov.au/projects/current-projects/regional-rail](http://transport.nsw.gov.au/projects/current-projects/regional-rail).

**For urgent enquiries or complaints about our construction activities, please contact our 24-hour construction response line on 1800 775 465.**



This document contains information about public transport projects in your area. If you require the services of an interpreter, please contact the Translating and Interpreting Service on **131 450** and ask them to call the Transport Projects Division on **(02) 9200 0200**. The interpreter will then assist you with translation.

For more information call **1800 684 490**,  
Email [projects@transport.nsw.gov.au](mailto:projects@transport.nsw.gov.au) or  
visit [transport.nsw.gov.au/projects/current-projects/regional-rail](http://transport.nsw.gov.au/projects/current-projects/regional-rail)  
For urgent enquiries or complaints regarding construction, please call 24 hours **1800 775 465**