

Transport for NSW

Tarago Rail Corridor Remediation Project

Community Information
Session

25 August 2022

transport.nsw.gov.au



OFFICIAL

Introductions

Vicki Oszko, Director, Regional Property & Asset Renewal

Sam Knight, Regional Director, South

Tabitha Holliday, Environmental Health Officer, NSW Health

Sandie Jones, Regional Manager, Regulatory Operations, NSW EPA

Agenda

- 1** Acknowledgement of Country
- 2** Transport for NSW update
- 3** NSW Health update
- 4** EPA update
- 5** Department of Education update
- 6** Questions & Answers
- 7** Online information session



Acknowledgement of
Country

I acknowledge and pay my respects to the Traditional Custodians of the lands on which we meet, especially Elders, past and present and acknowledge other Aboriginal people here and their respective cultures and nations.



Background

- The lead is related to a mining load-out facility that was used to load and unload lead ore concentrate from the Woodlawn Mine.
- The load-out facility operated from the mid-1980s before being demolished between 1997 and 2005.
- Transport notified the NSW EPA of the elevated lead levels at Tarago in November 2019.
- We developed and have been implementing a Voluntary Management Proposal (VMP).

Results of testing

- Lead impacts have been delineated within the rail formation, adjacent shallow soils and drainage lines.
- Lead has migrated a short distance from the rail corridor, with concentrations observed to rapidly decrease.
- Elevated metal concentrations in surface soils appears to have occurred in land immediately east of the site and across Boyd Street on other nearby properties. High metal concentrations have been identified in local public road reserves and with the exception of Boyd Street appear to be unrelated to the rail corridor.
- The contamination has not impacted groundwater.
- Surface water impacts to the Mulwaree River are not evident.
- Offsite migration of lead has occurred in airborne dust.
- All contaminant concentrations measured in rainwater tank water at all locations tested were below the Australian Drinking Water Guidelines.

Keeping the community safe

- Our primary focus is to ensure the safety of the community.
- We developed a Lead Management Action Plan that has been in place since 2020. The Action Plan has been prepared to minimise risks to human health and the environment until permanent remediation works are completed.
- The Action Plan involved spraying the rail corridor with a polymer sealant to reduce dust, removing contaminated sediment from drains under the corridor, installing sediment controls, and conducting monitoring.
- Both surface water and air quality monitoring were undertaken at the site for a period of over 12 months to confirm whether the interim management measures are effective.
- Observations from the monitoring confirm the controls are effective and lead in soils at the site does not pose an unacceptable risk.
- Monitoring of air and water were discontinued in mid-2021 as it was considered representative. This was approved by the independent EPA Accredited Site Auditor.
- Monitoring will restart before and during remediation work.

What have we done to date?

2019	2020
<ul style="list-style-type: none">• Initial investigation• Interim Management Plan• Surface Water Monitoring commenced• Air Monitoring commenced• Human Health Risk Assessment• Lead Management Plan• Reported to NSW EPA in November	<ul style="list-style-type: none">• NSW EPA Declared the Site Significantly Contaminated• NSW EPA Approved Voluntary Management Proposal• Sampling Quality & Analysis Plan• Detailed Site Investigation• Review of Residential Properties• Review of Community Properties• Air and Water Monitoring• Lead Management Plan Updated• Remediation Options Assessment

What have we done to date?

2021

- Residential Human Health Risk Assessment
- Community Risk Assessment
- Remediation Action Plan
- Waste Treatability Assessment and Trial
- Specific Immobilisation Application and Approval
- Ceased Air and Water Monitoring
- Site Audit Report and Statement
- Prepared and submitted to EPA an Amendment to Voluntary Management Proposal

2022

- NSW EPA Approved amendment to Voluntary Management Proposal
- Investigation determined the Approvals required for remediation
- Commenced investigations into waste disposal locations
- Commenced remediation implementation planning
- Former Station Masters Cottage
 - Reported to NSW EPA
 - NSW EPA declared the Site significantly contaminated

What are we doing going forward?

2022	2023	2024
<ul style="list-style-type: none">• Detailed Design and Engineering• Development Application• Confirm waste disposal facility• Resource Recovery Approval• Former Station Masters Cottage:<ul style="list-style-type: none">• Voluntary Management Proposal• Detailed Site Investigation	<ul style="list-style-type: none">• Remediation contractor procured• Remediation commenced• Former Station Masters Cottage:<ul style="list-style-type: none">• Remediation Options Assessment• Remediation Action Plan• Remediation Implementation Planning and Approvals	<ul style="list-style-type: none">• Remediation completed• Remediation validated• Former Station Masters Cottage:<ul style="list-style-type: none">• Remediation• Validation

Remedial Options Assessment

Option 1

Return of ore impacted materials from the site to Woodlawn Mine

Preferred option, if feasible

Option 2

Onsite containment

Not favoured

Option 3

Offsite treatment and disposal

Preferred option in the event materials cannot be returned to Woodlawn Mine

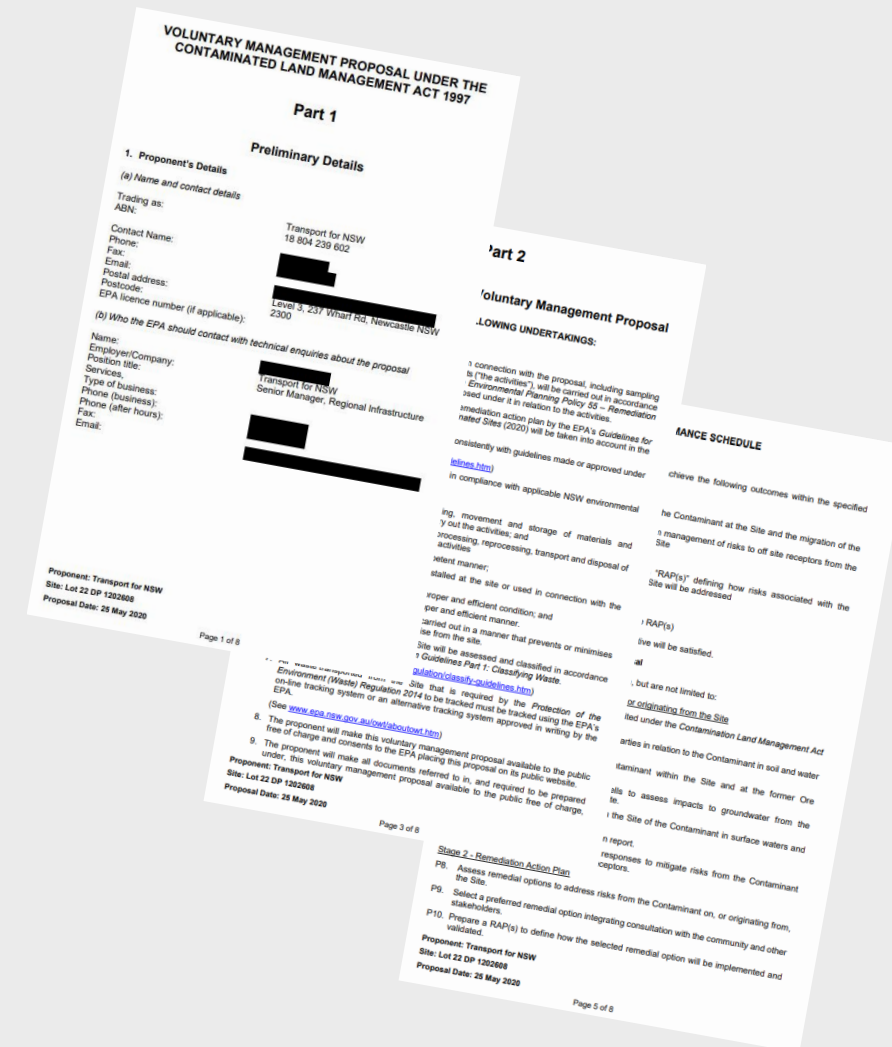
Option 4

Manage materials where they are currently located

Not favoured

Voluntary Management Proposal

- The EPA approved the amended VMP on 9 March 2022
<https://app.epa.nsw.gov.au/resources/clm/docs/html/n20224403.htm>.
- We expect to complete the planning, environmental approvals and procurement by late 2022.
- This is subject to obtaining the necessary third-party planning approvals such as an amended Environment Protection Licence and the DA.
- At this stage, we expect to complete the remediation within 18 months of receiving the third-party planning approvals.



NSW Health update

- Our role is to assist in the identification, prevention and minimisation of public health risks within the community
- NSW Health provides advice on potential public health risks in response to the presence of lead in the environment, particularly in children
- Blood lead levels exceeding 5 micrograms per decilitre are notified to NSW Health. Investigation can take place to identify the source of the lead, any broader risks that exist to the community, and to assist GPs in medical management of cases where required
- NSW Health provides guidance on the provisions of public and private drinking water supplies to ensure they comply with the Australian Drinking Water Guidelines, and that risks to the public are managed where there is a non-compliance

Work to date:

- Working with the community who have concerns about the potential to have elevated lead levels in their blood
- Working with Stakeholders and the community to understand the source of lead and provide the community information to live safely with lead in the environment, and reduce any potential public health risks
- Ongoing liaison with the Department of Education on the management of the drinking water supply at Tarago Public School

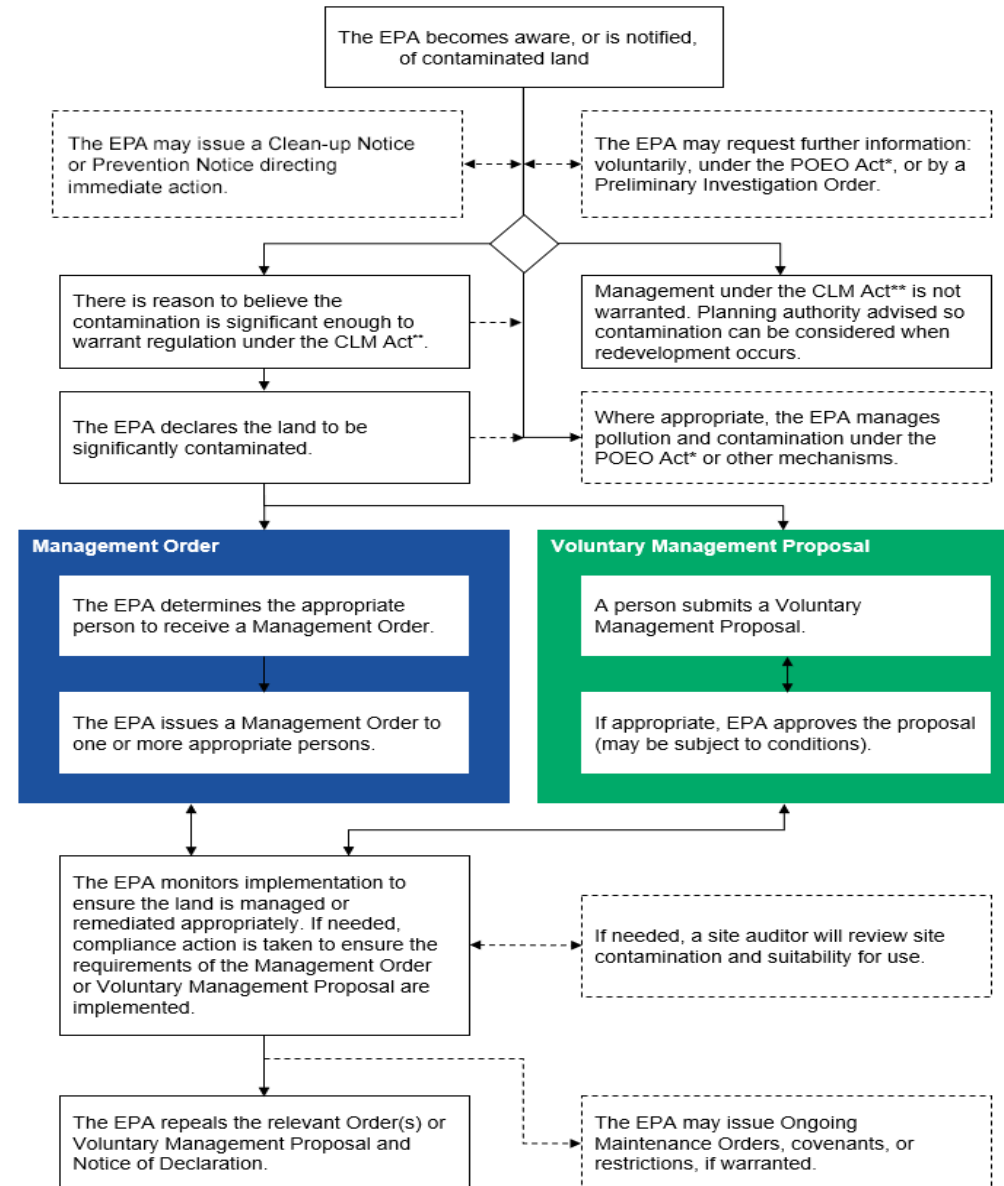


EPA's Role with Contaminated Land



- The EPA regulates contaminated land under the Contaminated Land Management Act 1997.
 - The EPA is responsible for regulating land that has been assessed as contaminated significantly enough to require regulation.
 - This regulation includes the assessment, remediation and management of significantly contaminated land across NSW,
-

Regulation of Contaminated Land



Independent Site Auditor



Independent Site Auditor assumes responsibility for:

- The independent review of investigation, remediation and validation work done by consultants
- Determining compliance with a Voluntary Management Proposal

The EPA's NSW Site Auditor Scheme provides a pool of accredited auditors

EPA Guidelines outline auditor roles and responsibilities

More information? www.epa.nsw.gov.au or 131 555

Information about lead

- For more information about lead exposure, please see the [NSW Health website](#).
- For more information about managing lead in the environment see the [EPA website](#).

Questions?



Keeping the community informed



Updates as planning work progresses



Updates on our website - www.transport.nsw.gov.au/tarago



Seek input to Development Application process



Updates before and during remediation



Email – landassessment@transport.nsw.gov.au



Phone – 1800 491 566

Online community information session

We will be running an online information session for those who couldn't attend tonight.



5.30pm to 7.00pm - 30 August

Contact us



Project website

www.transport.nsw.gov.au/tarago



Email address

landassessment@transport.nsw.gov.au



Phone – 1800 491 566

Thank you