

Redfern Station Upgrade

New Southern Concourse || Project Newsletter June 2022



Image above shows the start of construction on the new station entrance canopy on Marian Street.

What happened over the last three months?

Since March, we have seen continuous progress across all areas of the project. Most of the bridge components are now in place including stairs, lift shafts and platform canopies, and the roof of the new footbridge.

The new shared zones on Marian and Little Eveleigh Streets also continue to take shape on either side of the footbridge along with the new station entrances.

In addition to this, we have completed some key milestones over the past three months, listed below. We would like to thank our local community for your understanding and patience as we continue to deliver this important work.

Station area and platforms

- install lift shafts on platforms 1 and 4/5
- restore the Platform 1 heritage building
- install stairs on platforms 1, 2/3 and 4/5
- install the roof and side panels on the bridge
- install platform canopies on platforms 4/5, 6/7 and 8/9.



Images above show the start of construction on Marian Street (left) and Little Eveleigh Street (right) into new shared zones.

Marian Street

- paint, fit out and roofing of the electrical building at the new entrance
- start of construction of the Marian Street shared zone
- remove existing road materials, such as concrete and asphalt
- install stormwater drains and services on the shared zone.

Little Eveleigh Street

- continue stage one construction of Little Eveleigh Street shared zone
- concrete roadway, footpath and kerbs
- start of piling in the new station entrance building at 125-127 Little Eveleigh Street.

Powering up at Redfern Station

A new transformer was installed during February to provide power for the new infrastructure being built at Redfern Station.

The process to install a transformer involved an extensive and rigorous process of design reviews and testing and quality checks. Once the transformer arrived on site it was lifted by a large crane into the Marian Street compound, before it was installed and connected to a power supply.

This transformer will bring in power from substations around Redfern to supply electricity to the New Southern Concourse. It will be used to power the Marian Street and Little Eveleigh Street station entrances, the new lights, and passenger information displays when in operation.



Image 1: The new transformer being lifted by crane into the Marian Street compound.



Image 2: The new transformer in place within the electrical building at the Marian Street compound.

Unearthing history on Little Eveleigh and Marian Streets

During January and February, the Project team discovered some of Redfern's history during construction on Little Eveleigh Street and Marian Street shared zones.

Original sandstone blocks and guttering was unearthed and handled with great care by the Project team. Working with heritage experts, the team cleaned and repurposed the sandstone blocks to form part of the new kerbing on Little Eveleigh Street. City of Sydney Council is also planning to repurpose the remaining sandstone blocks within the Sydney CBD.

This process was carried out in line with the project's Construction Heritage Management Plan, and Historical Archaeology Research Design and Excavation Methodology.

Make sure to keep an eye out for these kerbs once stage one of the shared zone is complete!



Images above (left to right): Images show the discovery of the sandstone blocks, their repurposing on Little Eveleigh Street and the remaining blocks ready for collection and placement in their new home in the Sydney CBD.

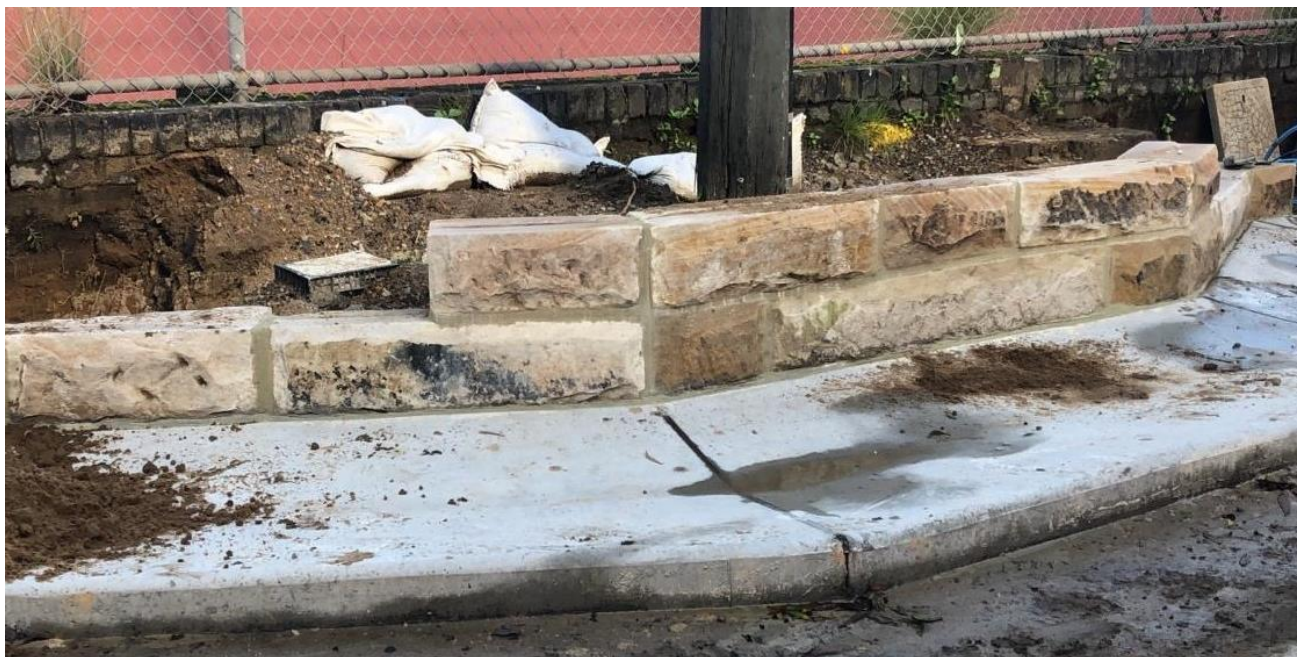


Image above shows a section of the new kerb on Little Eveleigh Street using the repurposed sandstone blocks.

Upcoming work - July to September 2022

To minimise disruption to train services and for the safety of the community and workers, weekend work is completed during scheduled trackwork weekends. The table below provides an overview of the weekends scheduled for the project over the next three months.

This work may be noisy at times, and we will implement measures to reduce potential impacts such as turning off equipment when not in use and where possible, using noise blankets. We will also notify residents directly where a direct noise impact is expected to occur closer to the time of work.

Three month look-ahead July – September 2022		
Upcoming weekend and night work at Redfern Station		
Upcoming weekend and night work	Scope summary Further details will be provided closer to the date	Construction location
2am Saturday 2 July to 2am Monday 4 July	Activities include installation of roofing, platform and station entrance canopies, installation of lift shafts components, electrical work, general bridge work and platform resurfacing	Across various platforms 1 to 10 and at the North Eveleigh and Marian Street site compounds.
2am Saturday 9 July to 2am Monday 11 July		
2am Saturday 23 July to 2am Monday 25 July		
2am Saturday 30 July to 2am Saturday 1 August		
2am Saturday 6 August to 2am Monday 8 August		
2am Saturday 17 September to 2am Monday 19 September		
Weekend and mid-week night work		
<p>Some weekend night work is required intermittently over the next three months to complete service investigation, excavation and stormwater installation between Lawson Street and Little Eveleigh Street. Night work is required to minimise traffic impacts and ensure the safety of workers, pedestrians, and road users. Updates on the timings of these activities will be included in our monthly project notifications.</p> <p>In addition to this, out of hours work activities are required for material and equipment removal, deliveries, concrete pouring, pre-assembly of bridge components and electrical work. This work is not expected to be noisy and will occur up to two nights per week.</p> <p>Work will also continue during this period in standard construction hours. We understand working out of standard construction hours may cause disruption, with all efforts made to minimise impacts where possible. We will keep the community informed closer to these dates when the work activities, potential impacts and timing for each weekend are confirmed.</p> <p>If you have any questions or feedback on these dates, please contact us at projects@transport.nsw.gov.au or 1800 684 490 by Friday 17 June 2022.</p> <p>For any urgent complaints or enquiries, please contact us on 1800 775 465.</p>		