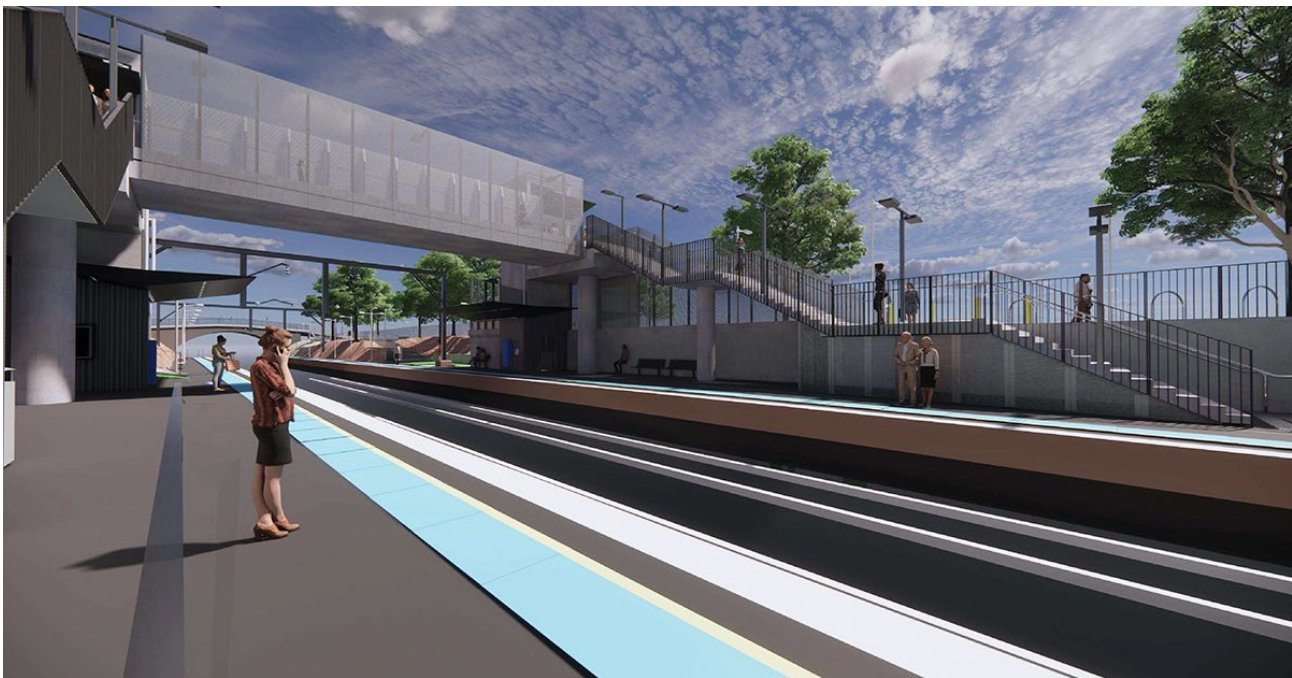


Transport Access Program

Towradgi Station Upgrade

Community notification May 2022

The NSW Government is improving accessibility at Towradgi Station. This upgrade will be delivered as part of the Transport Access Program, an initiative to provide a better experience for public transport customers by delivering modern, safe and accessible infrastructure.



Pictured: Artist's impression of the new look station

Work completed in April

In April, installation of mechanical and electrical services for the new lifts continued, drainage and civil works for the new footpath on Platform 1 and Platform 2 started, and structural steel for the stairs and retaining walls was installed.

Upcoming work

During May, we are planning to complete preparations which will allow us to do major installation work over the weekend of **Saturday 21 May and Sunday 22 May**.

For the safety of staff and customers, weekend work on Saturday 21 May and Sunday 22 May will take place during a scheduled Sydney Trains trackwork period, when no trains will be running, and the station will be closed. Signage will direct customers to alternative transport.

The work being carried out over this weekend will include:

- installing precast planks for the new footbridge
- installing structural steel canopies on Platform 1 and Platform 2
- installing screening on the bridge
- resurfacing sections of Platform 1 and Platform 2.

Equipment to be used includes delivery and dump trucks, excavators, a large crane, concrete trucks and pumps, compaction equipment and hand tools.

Some out-of-hours work will be required between **4am Friday 20 May** and **6pm Sunday 22 May**. This work may generate higher than normal levels of noise. Respite vouchers will be offered to residents immediately surrounding the out-of-hours working areas.

Wherever possible, we will take measures to reduce noise including turning off vehicles and equipment when not in use, monitoring noise, exercising respite periods during work, and using non-tonal reversing beepers. We apologise for the inconvenience and thank you for your patience while this work is carried out.

Working hours

Additional to the weekend of major work mentioned above, we will be doing some work on weekends between **7am and 6pm on Saturdays** and **8am and 6pm Sundays**. This work has been assessed for noise impacts and will not create any excessive noise. These additions are to compensate for delays caused by COVID-19, wet weather, and ongoing industrial action

This will be in addition to our work during standard construction hours **7am to 6pm Monday to Friday** and **8am to 1pm on Saturdays**.

All work is dependent on weather and site conditions and is subject to change.

Contact us

If you have any questions or would like more information, please contact our project team:

Call the project information line: 1800 684 490

Email: projects@transport.nsw.gov.au

Visit: transport.nsw.gov.au/towradgi

Call the 24/7 construction response line: 1800 775 465



Translating and Interpreting Service

If you need help understanding this information, please contact the Translating and Interpreting Service on **131 450** and ask them to call us on **1800 684 490**.