

Transport Access Program

Thornleigh Station Upgrade

June 2022



The Thornleigh Station Upgrade is part of the Transport Access Program, a NSW Government initiative to provide a station that is accessible to people with a disability, limited mobility, parents/carers with prams, and customers with luggage. We thank you for your patience during this important work.

What's next at Thornleigh?

Throughout June, work will include:

- constructing new lifts and canopies on the platform
- landscaping work on The Esplanade
- upgrading the station toilets to a new family accessible toilet and a unisex ambulant toilet.
- finishing work of the station waiting rooms,
- relocating the vending machine and opal top up machine to the station waiting rooms
- continuation of scaffolding works around the lifts
- extension of the existing footbridge connecting to the Benowie Walkway
- installing metal safety screens along the Benowie Walkway

Weekend and public holiday work – 11 to 13 June

Work will take place **between 6am and 6pm Saturday 11 June to Monday 13 June** in the rail corridor during scheduled Sydney Trains trackwork when trains are not running, and **the station is closed**.

Work will include the following activities:

- electrical work on Railway Parade for the new lift within the Benowie Walkway
- removal of existing toilets
- installing of new electrical pits on the station platforms
- installing drainage and electrical conduits around the new lifts

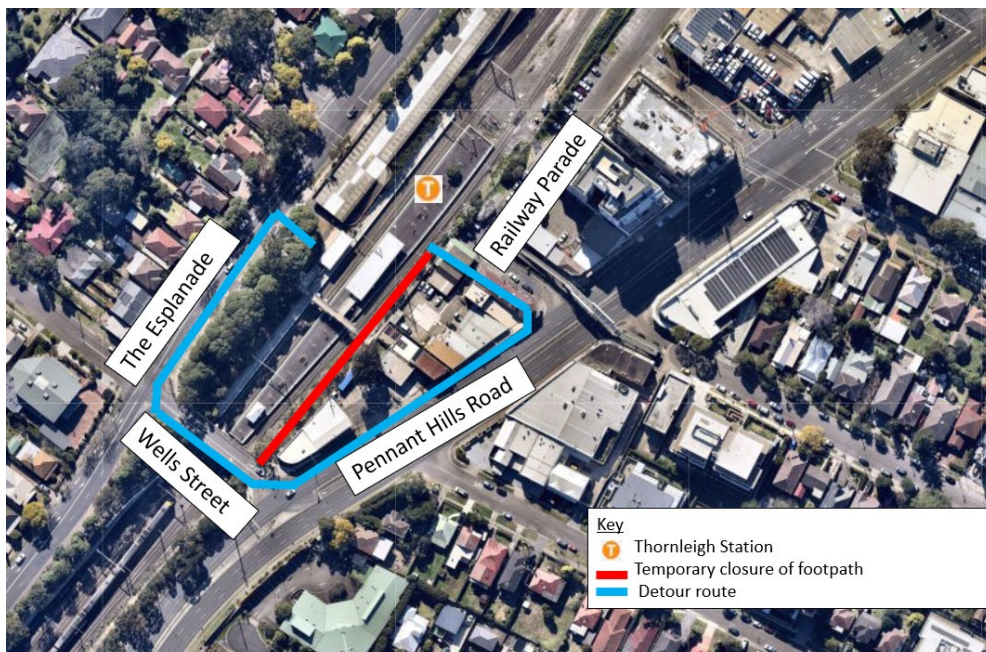
Approximately **6 car parking spaces** on Railway Parade will be temporarily unavailable between the station entrance and Bellevue Street while this weekend work is carried out.

Benowie Walkway extension of closure

Earlier this year we notified of the closure extension of Benowie Walkway to late June 2022. We require to continue with this closure until **late September 2022** due to a number of factors including wet weather, limited power outage permits issued, loss of weekend work during Sydney Trains industrial action, and the COVID-19 pandemic.

We apologise for this inconvenience and thank you for your patience while we carry out this important work.

Map of work area



Benowie Walkway footpath (in red) remains closed while the new entrance is constructed until Sep 2022

Temporary closure of station toilets

Commencing from **June** until **July 2022**, the station toilets will be temporarily closed to allow for a conversion to a new family accessible toilet and a unisex ambulant toilet. Work includes demolition of the existing toilets.

During this period, a temporary toilet will be available for use by station customers.

Landscaping work on The Esplanade

While we carry out landscaping work on The Esplanade a temporary ramp and footpath from the car park will be installed. Due to this work, from late May to early July, **one accessible car space** in the commuter car park will be unavailable.

The station entrance will remain open at all times during this work.

Map of car parking spaces unavailable



How will this work effect you?

Our work will use a range of equipment, excavators, vacuum trucks, road saws, tipper trucks, flatbed trucks, tilt trays, concrete trucks and pumps, elevated working platforms, lighting towers, dump trucks, augers, grinders, chain saws, chippers, and various hand and power tools.

Where possible, measures will be implemented to reduce noise and dust associated with this work, including adding shade cloth mesh to fencing, turning off equipment when not in use, placing equipment as far away as possible from properties and using non-tonal reversing beepers.

Construction hours

Standard construction hours include **7am to 6pm Monday to Friday** and **8am to 1pm Saturday**.

Changes to scheduled work

Work schedules are subject to change due to permits, weather and site conditions. Notification will be provided should there be significant changes to the construction program.

Contact us

If you have any questions or would like more on the Thornleigh Station Upgrade project, please contact our project team:



1800 684 490 – Project Infoline
1800 775 465 – 24 hour Construction Response Line



projects@transport.nsw.gov.au



transport.nsw.gov.au



18 Lee Street, Chippendale NSW 2008
PO Box K659, Haymarket NSW 1240



If you need help understanding this information, please contact the Translating and Interpreting Service on **131 450** and ask them to call us on **1800 684 490**