



Farm Gate Access Project

The Farm Gate Access project is a joint NSW Government, local council and industry initiative designed to improve freight productivity by connecting first and last mile journeys to the farm gate. This document outlines the participating councils who have granted conditional area wide access for their Local Government Area. Exclusions and travel conditions are noted below.

For more information, please refer to the following NSW Notices.

- NSW Livestock Loading Scheme [here](#)
- NSW Grain Harvest Management Scheme [here](#)

For more information please visit: nswroads.work/farmgate

Eligible Livestock Loading Scheme (LLS) and Grain Harvest Management Scheme (GHMS) vehicles must comply with all conditions of the Notice they are travelling under. Operators are required to check and must comply with conditions on the relevant TfNSW map or relevant routes listing for their vehicle type before travel.

Eligible vehicles may operate on the New South Wales Farm Gate Network providing they are operating under and complying with all conditions of the LLS or GHMS Notice, and are enrolled in and meet the requirements of the Road Infrastructure Management (RIM) telematics application under the National Telematics Framework

Participating Councils

- Gunnedah Shire Council
- Hay Shire Council
- Junee Shire Council
- Leeton Shire Council
- Liverpool Plains Shire Council
- Narrandera Shire Council
- Tamworth Regional Council
- Temora Shire Council
- Queanbeyan-Palerang Regional Council

For enquiries about information contained in this document please contact:

Freight@transport.nsw.gov.au

This document is UNCONTROLLED when downloaded or printed. This version supersedes all previously published versions.

Last updated 24 May 2022

Gunnedah Regional Council

Roads included – Area wide access approved on council roads with conditions

Participating in Farm Gate Network - Yes

Publish Date: 26 February 2021

Approved Vehicles types

Vehicle combination	Length (metres)	Eligible Livestock Loading Scheme (LLS) Vehicles	Eligible Grain Harvest Management Scheme (GHMS) Vehicles
Semi-Trailer	19m	Yes	Yes
B-Double	26m	Yes	Yes
Type 1 A-Double Road Train	36.5m	Yes	Yes
Modular B-triple Road train	35m	Yes	Yes
B-Triple Road Train	36.5m	Yes	Yes

Exclusions

Vehicle Type	Exclusion	Reason
All	Orange Grove Rd Bridge- 30km from the Kelvin Road turn-off and 6km from the Rushes Creek junction	8 Tonne load limit
Vehicles over 30m in length	No access over the Namoi River at Kelvin Road for vehicles over 30 metres	Narrow bridge
All	Nea Rail Crossing - near Curlewis	Short stacking issues
All	Approved routes only in Gunnedah town centre	Gunnedah town centre excluded for all vehicles (shown in red on the below map) Approved routes are shown in green.
B- Double, Type 1 A -double road train, Modular B-triple, B-Triple road train	Gunnedah urban areas as displayed on the map	Heavy vehicles other than semi-trailers require council consent in Gunnedah urban areas (shown in purple on the below map)



Hay Shire Council

Roads included – Area wide access approved on council roads

Participating in Farm Gate Network - Yes

Publish Date: 24 May 2022

Approved Vehicles types

Vehicle combination	Length (metres)	Eligible Livestock Loading Scheme (LLS) Vehicles	Eligible Grain Harvest Management Scheme (GHMS) Vehicles
Semi-Trailer	19m	Yes	Yes
B-Double	26m	Yes	Yes
Type 1 A-Double Road Train	36.5m	Yes	Yes
Modular B-Triple Road Train	35.0m	Yes	Yes
B-Triple Road Train	36.5m	Yes	Yes
AB-Triple Road Train	36.5m	Yes	Yes

Exclusions

Vehicle Type	Exclusion	Reason
	Nil	

Junee Shire Council

Roads included – Area wide access approved on council roads with conditions

Participating in Farm Gate Network - Yes

Publish Date: 26 February 2021

Approved Vehicles types

Vehicle combination	Length (metres)	Eligible Livestock Loading Scheme (LLS) Vehicles	Eligible Grain Harvest Management Scheme (GHMS) Vehicles
Semi-Trailer	19m	Yes	Yes
B-Double	26m	Yes	Yes

Exclusions

Vehicle Type	Exclusion	Reason
All	Kemp Street, Junee	Access not suitable
All	Lord Street Bridge on Lord Street, Junee	Bridge is excluded

Leeton Shire Council

Roads included – Area wide access approved on council roads

Participating in Farm Gate Network - Yes

Publish Date: 24 May 2022

Approved Vehicles types

Vehicle combination	Length (metres)	Eligible Livestock Loading Scheme (LLS) Vehicles	Eligible Grain Harvest Management Scheme (GHMS) Vehicles
Semi-Trailer	19m	Yes	Yes
B-Double	26m	Yes	Yes
Type 1 A-Double Road Train	36.5m	Yes	Yes
Modular B-Triple Road Train	35.0m	Yes	Yes
B-Triple Road Train	36.5m	Yes	Yes
AB-Triple Road Train	36.5m	Yes	Yes

Exclusions

Vehicle Type	Exclusion	Reason
	Nil	

Liverpool Plains Shire Council

Roads included – Area wide access approved on council roads with conditions

Participating in Farm Gate Network - Yes

Publish Date: 24 May 2022

Approved Vehicles types

Vehicle combination	Length (metres)	Eligible Livestock Loading Scheme (LLS) Vehicles	Eligible Grain Harvest Management Scheme (GHMS) Vehicles
Semi-Trailer	19m	Yes	Yes
B-Double	26m	Yes	Yes
Type 1 A-Double Road Train	36.5m	Yes	Yes

Exclusions

Vehicle Type	Exclusion	Reason
All	Gap Road (RR 579)	Nil access - MR 130 (Werris Creek Rd) to Kamilaroi Highway (HW 29)
All	Werris Creek	Nil access over single lane concrete bridge over Miiki River immediately east of the Williewarina Road T-intersection
All	Bundella Road, Pine Ridge	Operating Conditions: (1) It is the responsibility of the driver of the B-Double transport to satisfy themselves that the proposed route is suitable for use under the conditions existing at the time and undertake a risk assessment of the route prior to travelling the route to assess the suitability of travel along the route. (2) Temporary route restrictions may be imposed when routes become impassable for heavy vehicles. (3) Following rainfall the driver of a B-Double transport must check with the Liverpool Plains Shire Council, or the RTA Area Office, regarding possible road closures. (4) Extreme care must be taken on the route especially during wet weather or during school bus hours.

Narrandera Shire Council

Roads included – Area wide access approved on council roads with conditions

Participating in Farm Gate Network - Yes

Publish Date: 26 February 2021

Approved Vehicles types

Vehicle combination	Length (metres)	Eligible Livestock Loading Scheme (LLS) Vehicles	Eligible Grain Harvest Management Scheme (GHMS) Vehicles
Semi-Trailer	19m	Yes	Yes
B-Double	26m	Yes	Yes
Type 1 A-Double Road Train	36.5m	Yes	Yes

Exclusions

Vehicle Type	Exclusion	Reason
All	Brewarrana bridge over Old Man Creek	Bridge is excluded

Tamworth Regional Council

Roads included – Area wide access approved on council roads with conditions

Participating in Farm Gate Network - Yes

Publish Date: 26 February 2021

Approved Vehicles types

Vehicle combination	Length (metres)	Eligible Livestock Loading Scheme (LLS) Vehicles	Eligible Grain Harvest Management Scheme (GHMS) Vehicles
Semi Trailer	19m	Yes	Yes
B-Double	26m	Yes	Yes

Exclusions

Vehicle Type	Exclusion	Reason
All	O'Brians Lane, Calala	Load limit 10 tonnes on road. Permit application required for travel exemption.
All	Wilburtree Street, Hillview/South Tamworth	Load limit 15 tonnes on road. Permit application required for travel exemption.
All	Hillvue Road, Hillview/South Tamworth	Load limit 15 tonnes on road. Permit application required for travel exemption.
All	Daruka Road, Daruka	Load limit 10 tonnes on road. Permit application required for travel exemption.
All	Tintinhull Road, Tintinhull	Load limit 10 tonnes on Road. Permit application required for travel exemption.
All	Rail Crossing at New England Highway (Armidale rd) and Hall St, Tamworth	Short stacking issues

Temora Shire Council

Roads included – Area wide access approved on council roads with conditions

Participating in Farm Gate Network - Yes

Publish Date: 26 February 2021

Approved Vehicles types

Vehicle combination	Length (metres)	Eligible Livestock Loading Scheme (LLS) Vehicles	Eligible Grain Harvest Management Scheme (GHMS) Vehicles
Semi Trailer	19m	Yes	Yes
B-Double	26m	Yes	Yes
Type 1 A-Double Road Train	36.5m	Yes	Yes
Modular B-triple Road train	35m	Yes	Yes
B-Triple Road Train	36.5m	Yes	Yes
AB-Triple Road Train	36.5m	Yes	Yes

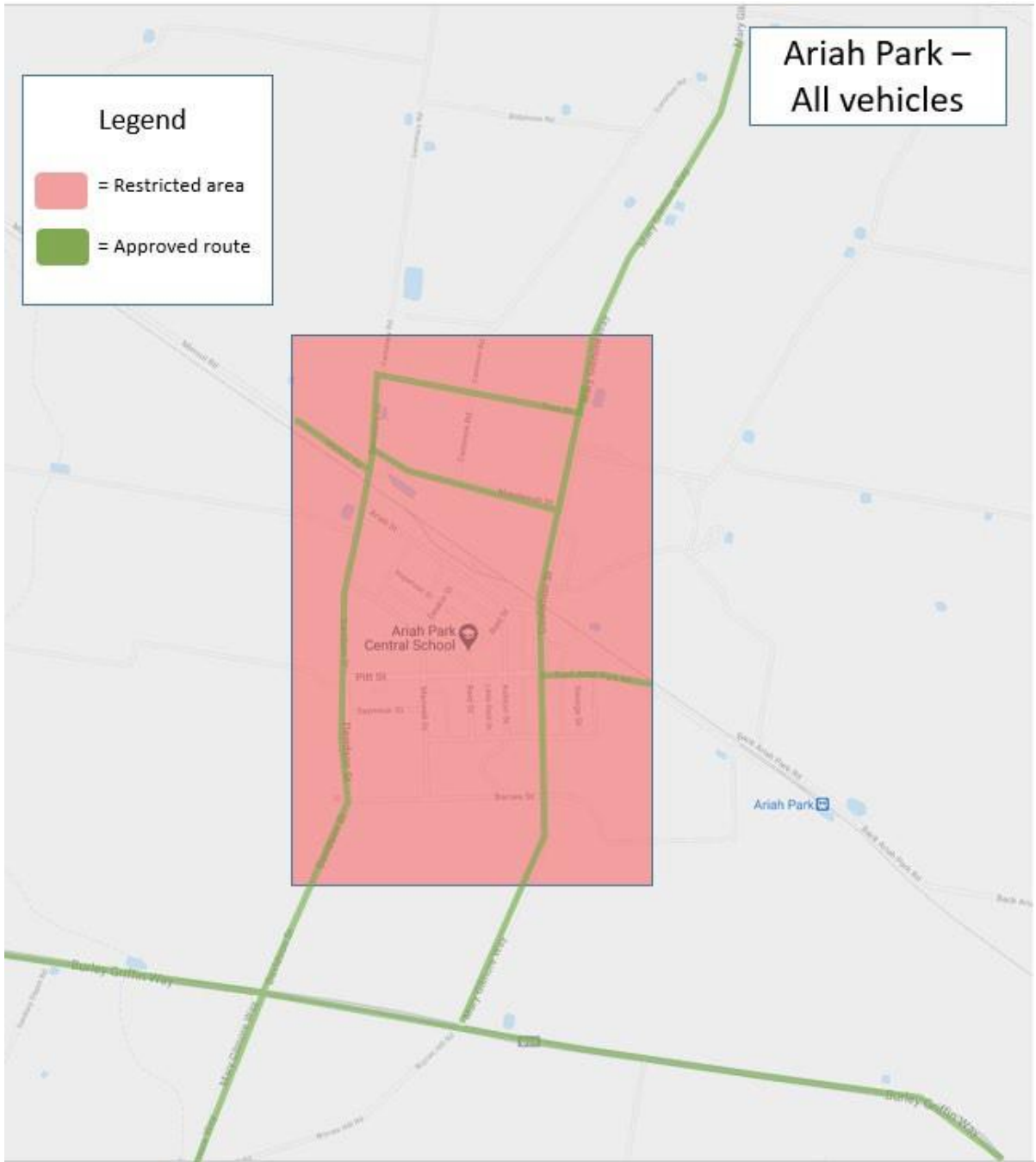
Travel conditions

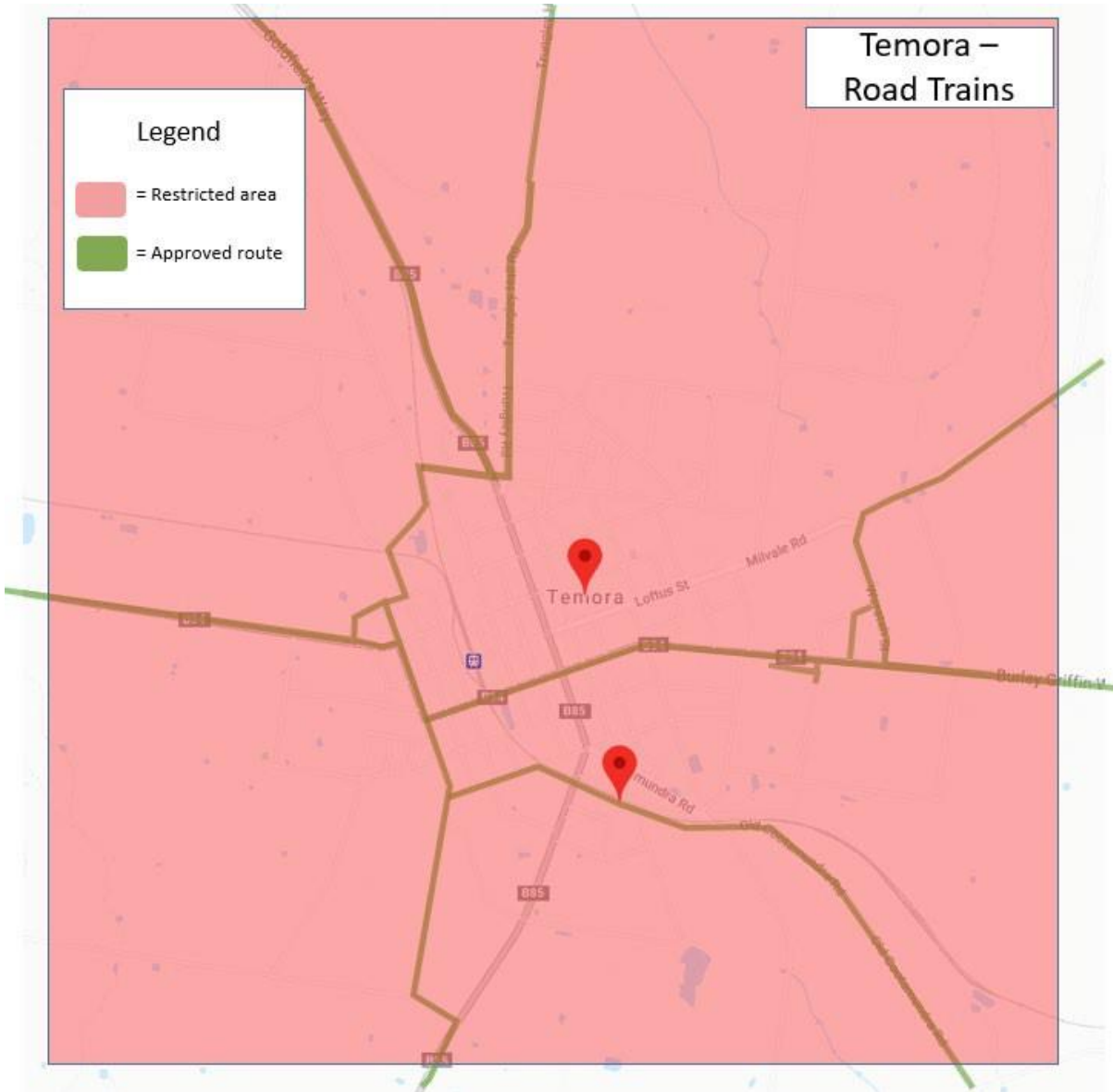
Vehicle combination	Travel Condition
Type 1 A-Double Road Train	60 Km/h speed limit on Unsealed roads 40Km/h limit on Ashelford Street, Temora
Modular B-triple Road train	60 Km/h speed limit on Unsealed roads 40Km/h limit on Ashelford Street, Temora
B-Triple Road Train	60 Km/h speed limit on Unsealed roads 40Km/h limit on Ashelford Street, Temora
AB-Triple Road Train	60 Km/h speed limit on Unsealed roads 40Km/h limit on Ashelford Street, Temora

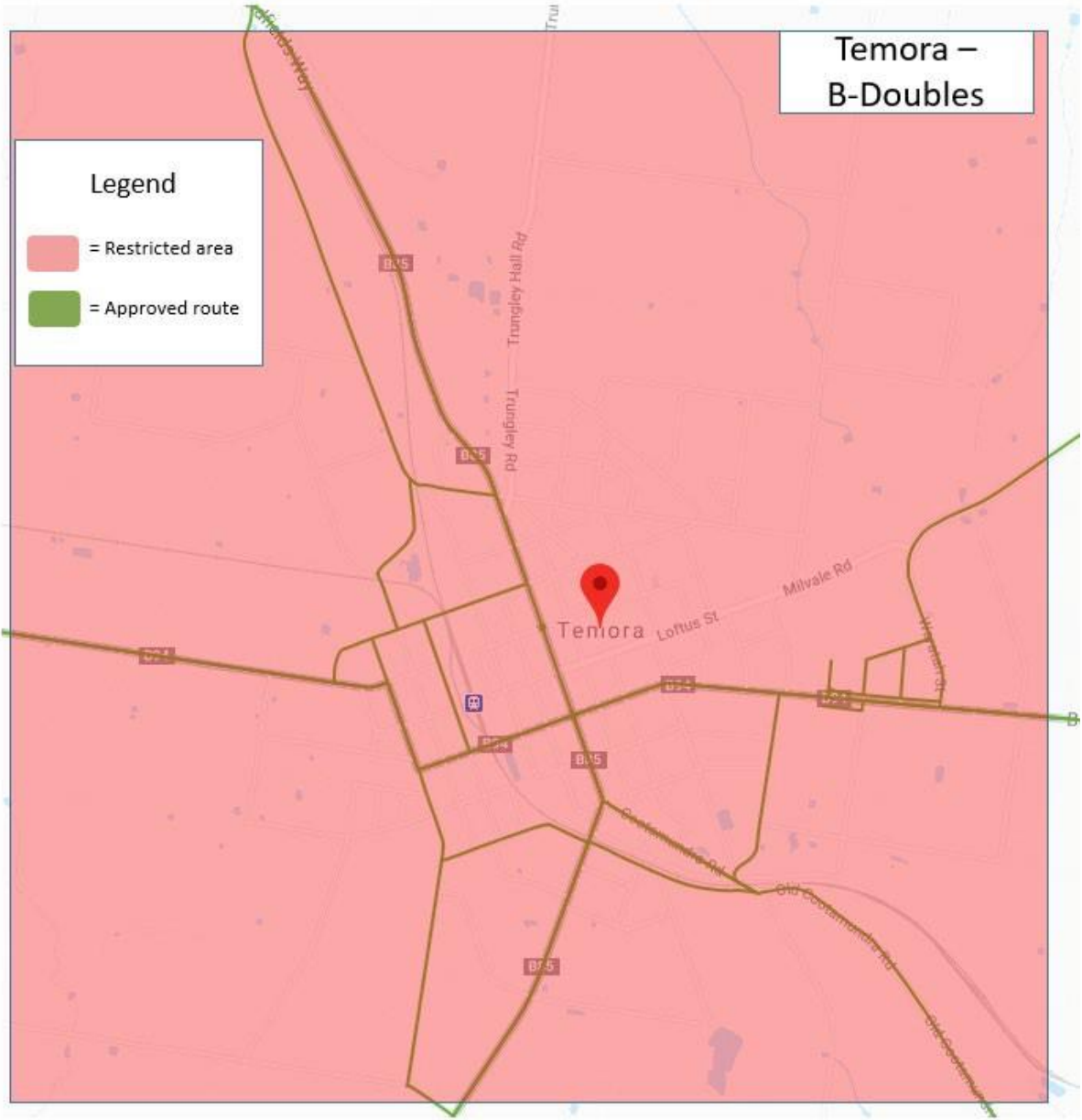
Exclusions

Vehicle Type	Exclusion	Reason
All	Approved routes only in Aria Park	Aria Park excluded for all vehicles (shown in red on the below map) Approved routes are shown in green.
All Road Trains	Approved routes only in Temora	Temora town centre excluded for all vehicles (shown in red on the below map) Approved road train routes are shown in green.
Semi-trailer and B-Doubles	Approved routes only in Temora	Temora Town Centre excluded for all vehicles (shown in red on the below map) Approved B-Double routes are shown in green.
All road trains	Rail crossing at Goldfields way and Airport St, Temora	Short stacking issues

All road trains	Rail Crossing at Goldfields Way and Thanowring Rd, Temora	Short stacking issues
All road trains	Rail Crossing at Goldfields Way and Rodways Lane Temora	Short stacking issues
All road trains	Rail Crossing at Goldfields Way and Cedar Road, Temora	Short stacking issues
All road trains	Rail Crossing at Goldfields Way and Stewarts Road, Temora	Short stacking issues
All road trains	Rail Crossing at Goldfields Way and Howards Road, Temora	Short stacking issues
All road trains	Rail Crossing at Goldfields Way and Schmidts Road, Temora	Short stacking issues
All road trains	Rail Crossing at Goldfields Way and Slingers Road, Temora	Short stacking issues
All road trains	Rail Crossing at Goldfields Way and Fields Lane, Temora	Short stacking issues







Queanbeyan-Palerang Regional Council

Roads included – Area wide access approved on council roads with conditions

Participating in Farm Gate Network - Yes

Publish Date: 24 May 2022

Approved Vehicles types

Vehicle combination	Length (metres)	Eligible Livestock Loading Scheme (LLS) Vehicles	Eligible Grain Harvest Management Scheme (GHMS) Vehicles
Semi-Trailer	19m	Yes	Yes

Exclusions

Vehicle Type	Exclusion	Reason
	Nil	