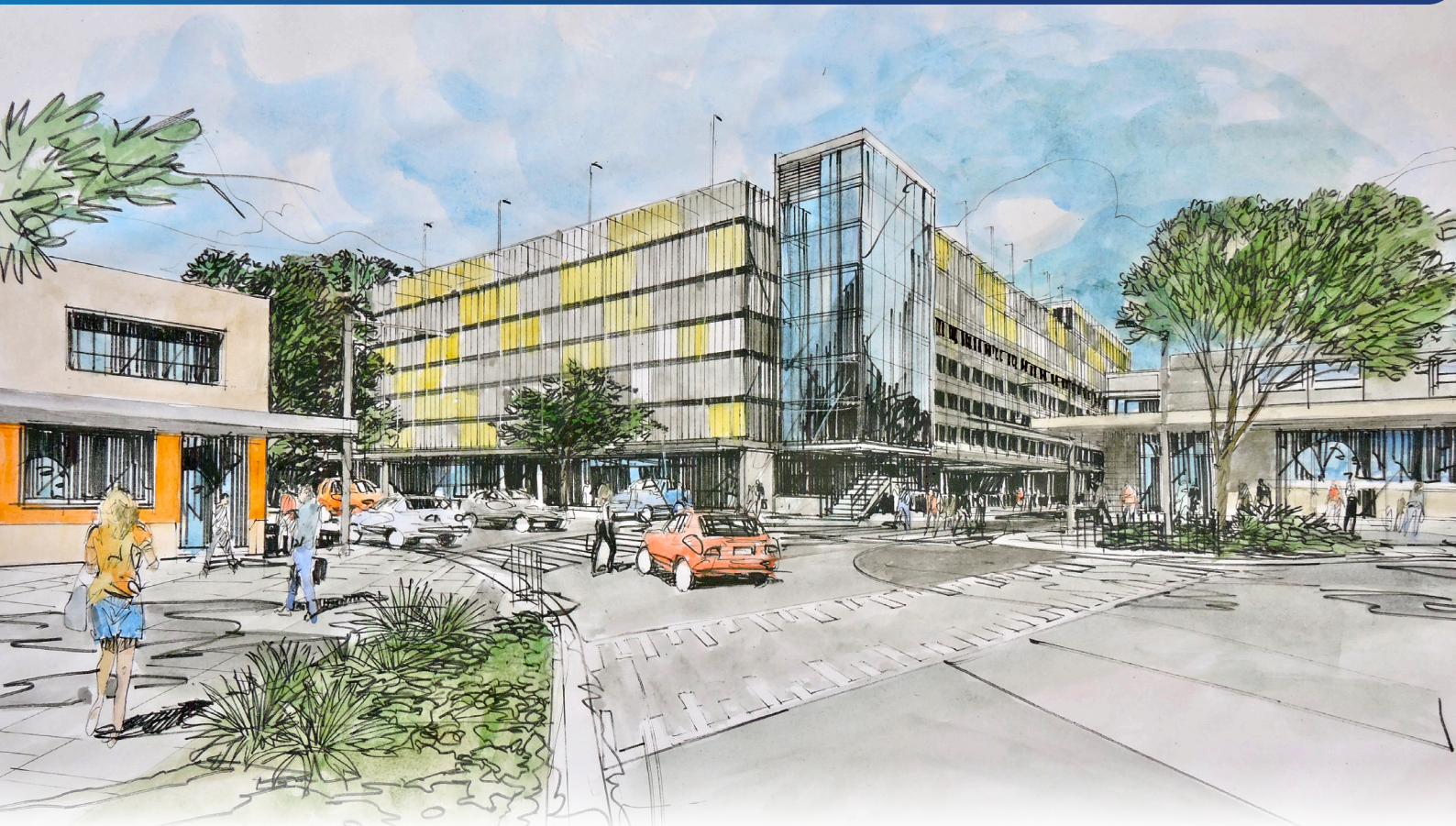


Commuter Car Park Program Revesby



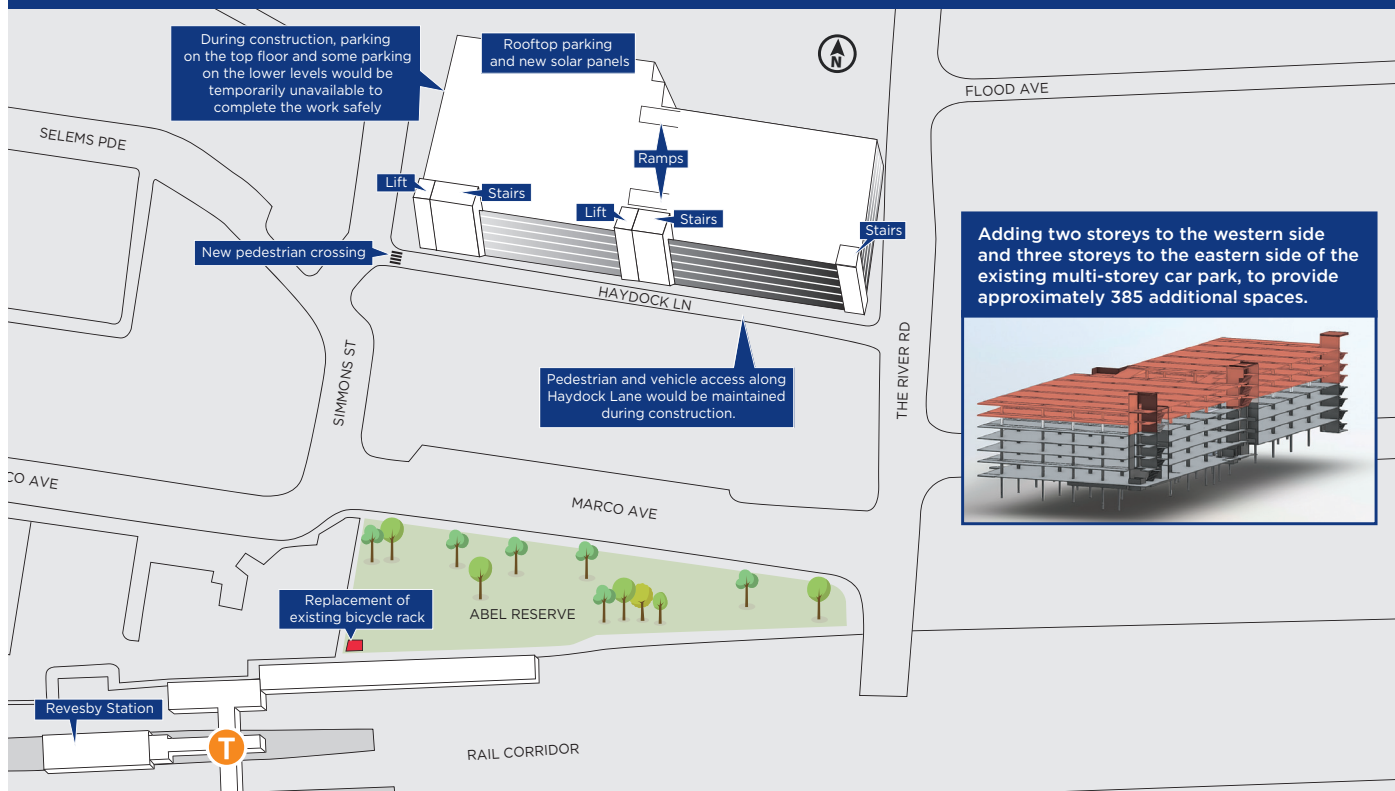
Artist's impression of Revesby commuter car park extension, subject to detailed design

More commuter parking at Revesby is on the way

Planning approval has been granted to provide additional commuter parking at Revesby. We will be adding two storeys to the western side and three storeys to the eastern side of the existing multi-storey car park, providing approximately 385 additional parking spaces. The project is jointly funded by the Australian and NSW Governments.

Thank you to everyone who made a submission on the Review of Environmental Factors. Feedback received from the community will be considered during the detailed design phase of the project. A copy of the Determination Report, including responses to submissions is available on our website at www.transport.nsw.gov.au/revesby.

Key features of the Revesby Commuter Car Park



Site map of commuter car park extension, subject to detailed design

Key themes raised during consultation

Some of the key themes raised during consultation include:

Loss of parking during construction

We received some feedback from the community concerned about the reduction of parking during construction of the additional levels. In order to complete construction work safely, parking on the top floor and some parking on the lower floors would be temporarily unavailable. We will continue to monitor availability of commuter parking during construction.

Request for additional train and bus services to the area

Transport for NSW appreciates customer feedback about our public transport services and regularly

monitors patronage to ensure services are meeting demand. In mid-2020 we introduced additional bus services in the Revesby area and surrounding suburbs. Approximately 260 additional weekly bus trips were introduced to provide local residents with a higher level of service and provide more travel options throughout the week.

Since 2017 we have delivered two extra train services in the morning peak and have plans to introduce more peak services for T8 Airport Line customers in late 2022, including two extra services from Revesby. We'll continue to monitor public transport use in Revesby and keep customers informed of any additional services changes.

Suggestion for increased commuter parking at other stations in the area

The expansion of Revesby multi-storey car park is to meet demand and cater for growth in the local area. We are also investigating commuter car parking at other locations, including Panania, to address future demands.

Traffic flow in the area

We heard feedback from the community regarding traffic flow in the area. As part of the development of the Review of Environmental Factors, we undertook traffic assessments to understand how nearby streets currently operate and how the additional levels may impact traffic flow. Our studies showed that additional traffic from the car park expansion would have a negligible effect on traffic on nearby streets.



Artist's impression of Revesby commuter car park extension, subject to detailed design

Next steps

We have engaged ADCO to design and construct the additional levels on behalf of Transport for NSW and detailed design is now underway.

Major construction of the car park expansion is planned to begin in coming months, with the additional levels expected to be open to customers by early 2022.

Keeping you up to date

We will continue to keep you informed about the project through notifications to customers, local residents and businesses and frequent updates published on our website: transport.nsw.gov.au/reesby.

If you would like to be added to the distribution list to receive regular project updates via email, please contact us on **1800 684 490** or email projects@transport.nsw.gov.au.

About the Commuter Car Park Program

The Commuter Car Park Program is a NSW Government initiative to provide you with more convenient access to public transport interchanges and help ease congestion on our roads. We have already delivered more than 10,000 commuter car spaces across Sydney since 2011, with another 8,000 on the way.

Arabic

تتضمن هذه الوثيقة معلومات عن مشاريع النقل العام في منطقتكم . إذا كنتم بحاجة الى خدمات مترجم، الرجاء الإتصال بخدمة الترجمة الشفهية والخطية على رقم 131 450 واطلبوا منهم ان يتصلوا بمصلحة المواصلات في نيو ساوث ويلز على رقم 1800 684 490 . عندها يساعداكم المترجم بالترجمة .

Vietnamese

Tài liệu này có các thông tin quan trọng về các dự án giao thông công cộng trong khu vực của quý vị. Nếu quý vị cần sự giúp đỡ của thông dịch viên, xin vui lòng liên hệ với Dịch vụ Thông Phiên Dịch ở số điện thoại 131 450 và yêu cầu họ gọi cho Cơ quan Giao thông Tiểu bang NSW ở số điện thoại 1800 684 490. Sau đó thông dịch viên sẽ giúp thông dịch cho quý vị.



This document contains important information about public transport projects in your area. If you require the services of an interpreter, please contact the Translating and Interpreting Service on **131 450** and ask them to call Transport Projects on **1800 684 490**. The interpreter will then assist you with translation.