

# Yagoona Station Upgrade

## Community Update – April 2022

### Upcoming work

Construction at Yagoona Station is progressing well and activities will continue in April, including:

- ongoing installation and relocation of electrical, water, communication and CCTV services in and around the station and Gazzard Park
- building a new ramp between the station and Breasley Place car park
- upgrade of existing ramp between Gazzard Park and the Hume Highway, including excavation and concreting
- stockpile management and material removal from within the rail corridor
- tree planting around the station
- installation of station signage
- remedial painting works on the station platform
- replacing precast panels along Hume Highway

### Access Changes

The footpath between Gazzard Park car park and the Hume Highway will remain **closed in April 2022** to enable upgrades to the existing footpath and construction of a new footpath to Cooper Lane.

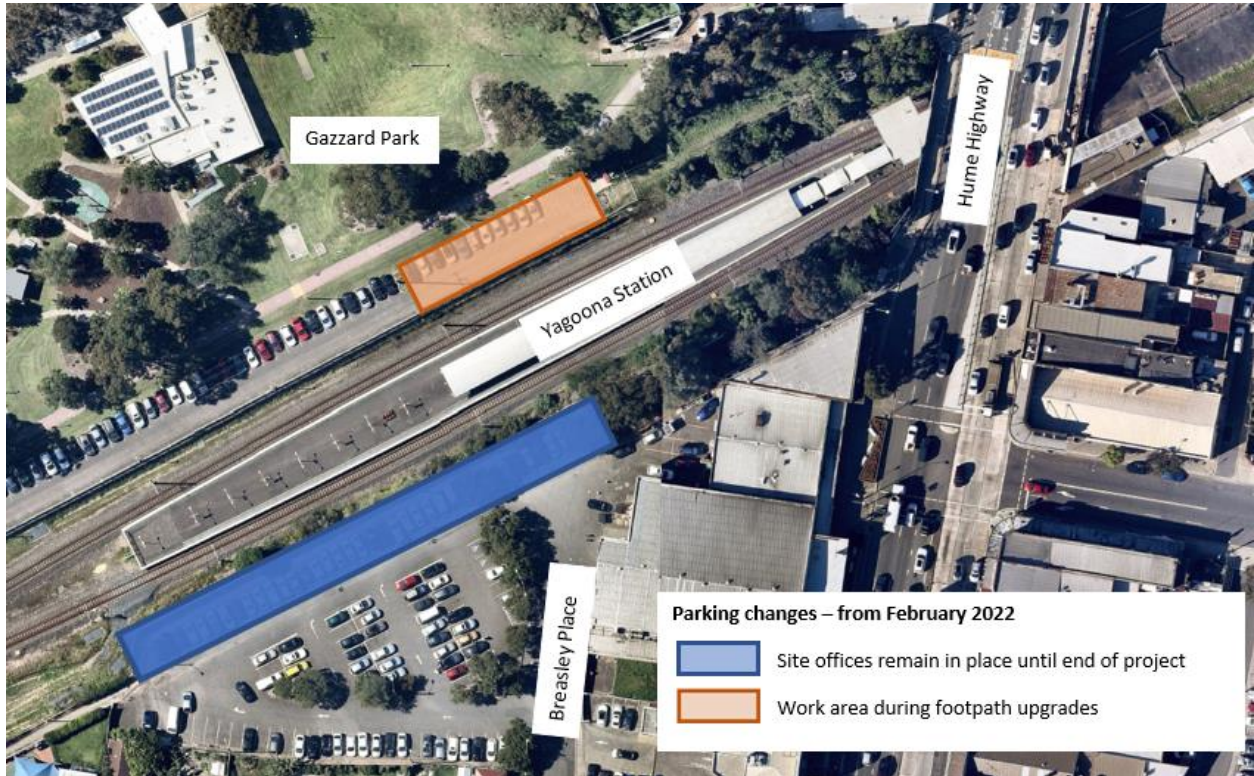
Access to the station from Gazzard Park car park will be via Gazzard Park and Cooper Road during this time. Please follow the direction of detour signs.

### Construction hours

During April, there will be no night or weekend work. Standard construction hours will be 7am to 6pm Monday to Friday. For the safety of staff, customers and the community, some work will be completed outside standard construction hours. We will notify nearby residents and businesses in advance if we need to work outside these times.

### Parking changes

Temporary parking changes in the Breasley Place car park for site offices will remain in place until the end of the project, and temporary parking changes in the Gazzard Park car park will also be in place in April during footpath upgrades. Please see the map on the next page.



## Keep in touch

We will continue to keep the community informed with regular project updates. Further information is available on the project website [transport.nsw.gov.au/yagoona](https://transport.nsw.gov.au/yagoona). If you would like to be added to the project distribution list, or for more information on the Yagoona Station Upgrade, please contact us on **1800 684 490** or email [projects@transport.nsw.gov.au](mailto:projects@transport.nsw.gov.au).

For all urgent enquiries or complaints regarding construction activities, please call our 24-hour Construction Response Line on **1800 775 465**.

## Contact us

If you have any questions or would like more information about the Yagoona Station Upgrade please contact our project team:



1800 684 490



[projects@transport.nsw.gov.au](mailto:projects@transport.nsw.gov.au)



[transport.nsw.gov.au/projects-tap](https://transport.nsw.gov.au/projects-tap)



231 Elizabeth St, Sydney NSW 2000  
PO Box K659, Haymarket NSW 1240



If you need help understanding this information, please contact the Translating and Interpreting Service on **131 450** and ask them to call us on **1800 684 490**