

# Yagoona Station Upgrade

## Community Update – February 2022

### Upcoming work

Construction at Yagoona Station is progressing well and the new station concourse structure was installed last month.

Activities will continue in February, including:

- ongoing installation and relocation of electrical, water, communication and CCTV services in and around the station
- installation and fit out of station building services on the platform and new concourse
- building a new ramp between the station and Breasley Place car park, including excavation and concreting
- upgrade of existing ramp between Gazzard Park and the Hume Highway
- stockpile management and material removal from within the rail corridor.

### Weekend work – From 5 to 7 February 2022

Work will be carried out from **6am Saturday 5 February to 2am Monday 7 February 2022** during a scheduled Sydney Trains track work weekend, when the station is closed and no trains are running.

Work will include resurfacing work on the platform and installation of scaffolding and steel works on the concourse. Equipment to be used includes construction trucks, excavators, hi-rail equipment, rollers, power and hand tools.

There may be some noise associated with this work and measures will be implemented to reduce impacts wherever possible, such as turning off vehicles when not in use, positioning construction equipment as far away from residential areas as possible, using non-tonal reversing beepers, and monitoring noise levels.

Please visit [transportnsw.info](https://transportnsw.info) or call **131 500** for information about replacement buses during this time.

## Night work – from Monday 21 February 2022

Footpath upgrades along the Hume Highway near Yagoona Station will be carried out for approximately four nights **between 8pm and 6am from Monday 21 February 2022.**

To ensure work can be carried out safely, the footpath and one lane of the Hume Highway will be temporarily closed during this time.

The bus stop near Yagoona Station will remain open.

## Access changes

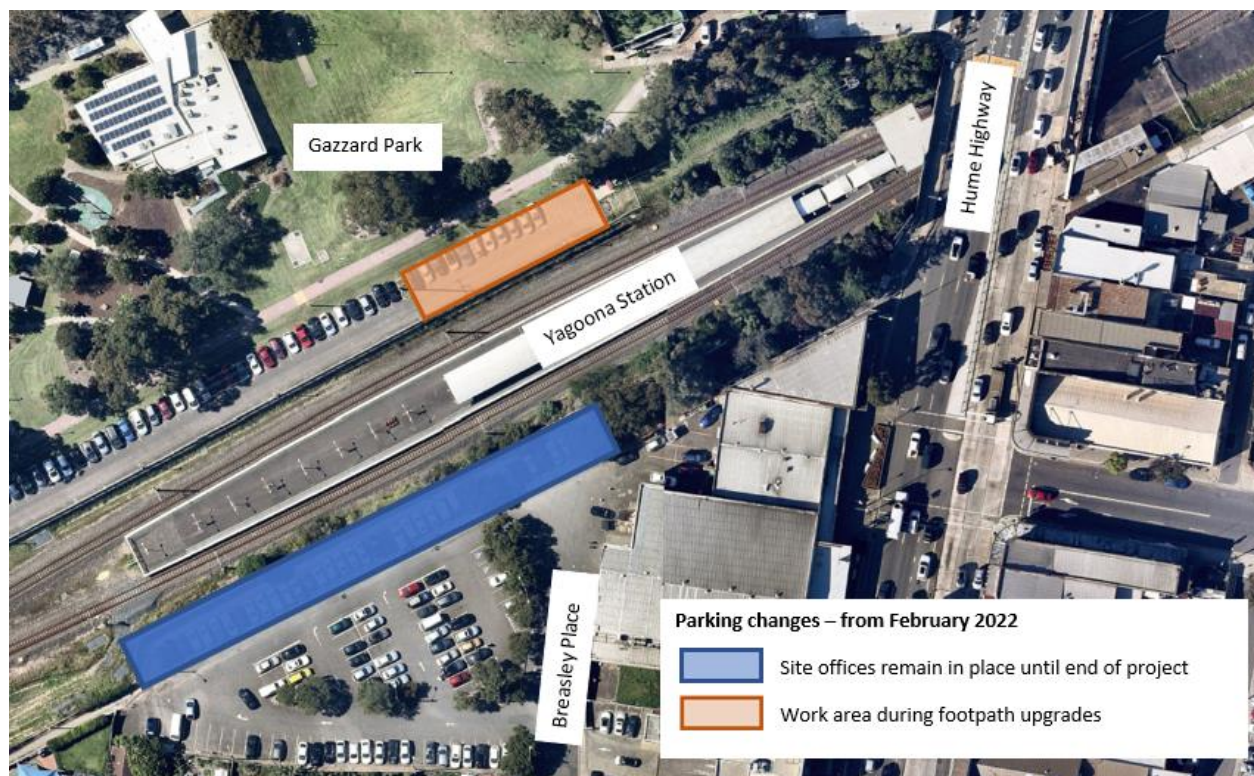
The footpath between Gazzard Park car park and the Hume Highway will be temporarily **closed from Tuesday 1 February 2022** to enable upgrades to the existing footpath and construction of a new footpath to Cooper Lane.

Access to the station from Gazzard Park car park will be via Gazzard Park and Cooper Road during this time. Please follow the direction of detour signs.

## Parking changes

Temporary parking changes in the Breasley Place car park for site offices will remain in place until the end of the project.

Temporary parking changes in the Gazzard Park car park will also be in place in February during footpath upgrades.



## Construction hours

Standard construction hours are 7am to 6pm Monday to Friday and 8am to 1pm on Saturdays.

For the safety of staff, customers and the community, some work will be completed outside standard construction hours. We will notify nearby residents and businesses in advance if we need to work outside these times.

## Keep in touch

We will continue to keep the community informed with regular project updates.

Further information is available on the project website [transport.nsw.gov.au/yagoona](https://transport.nsw.gov.au/yagoona).

If you would like to be added to the project distribution list, or for more information on the Yagoona Station Upgrade, please contact us on **1800 684 490** or email [projects@transport.nsw.gov.au](mailto:projects@transport.nsw.gov.au).

For all urgent enquiries or complaints regarding construction activities, please call our 24-hour Construction Response Line on **1800 775 465**.

## Contact us

If you have any questions or would like more on the Yagoona Station Upgrade project please contact our project team:



1800 684 490



[projects@transport.nsw.gov.au](mailto:projects@transport.nsw.gov.au)



[transport.nsw.gov.au/projects-tap](https://transport.nsw.gov.au/projects-tap)



231 Elizabeth St, Sydney NSW 2000  
PO Box K659, Haymarket NSW 1240



If you need help understanding this information, please contact the Translating and Interpreting Service on **131 450** and ask them to call us on **1800 684 490**