

Yagoona Station Upgrade

Community Update – May 2022

Upcoming work

Construction at Yagoona Station is progressing well.

Activities will continue in May, including:

- site survey, investigations and service relocations and upgrades
- ongoing installation and relocation of electrical, water, communication and CCTV services in and around the station and Gazzard Park
- building a new ramp between the station and Breasley Place car park
- upgrade of existing ramp between Gazzard Park and the Hume Highway, Including excavation and concrete works
- stockpile management and material removal
- tree planting and landscaping around the station
- installation of fencing and balustrades on both ramps
- installation of station signage and tactiles
- remedial painting works on the station platform.

Weekend work – 7 to 9 May 2022

Work will be carried out from **6am Saturday 7 May to 2am Monday 9 May 2022** during a scheduled Sydney Trains track work weekend, when the station is closed and no trains are running.

Work will include:

- removal of scaffolding
- installation of precast panels along Hume Highway at station entrance
- asphaltting the remainder of the platform and painting on the coping edge
- installation of screens on the concourse and stairs.

Equipment to be used includes construction trucks, excavators, hi-rail equipment, rollers, power and hand tools.

There may be some noise associated with this work and measures will be implemented to reduce impacts wherever possible, such as turning off vehicles when not in use, positioning construction equipment as far away from residential areas as possible, using non-tonal reversing beepers, and monitoring noise levels.

Please visit transportnsw.info or call **131 500** for information about replacement buses during this time.

Night work

An upgrade to the electricity cable on the Hume Highway in front of the station will be carried out from **5pm to 2am from Tuesday 10 May to Friday 13 May 2022**. To enable these works to be carried out safely, the footpath will be closed and pedestrian diversions in place as required.

Equipment to be used includes construction trucks, excavators, power and hand tools.

Access changes

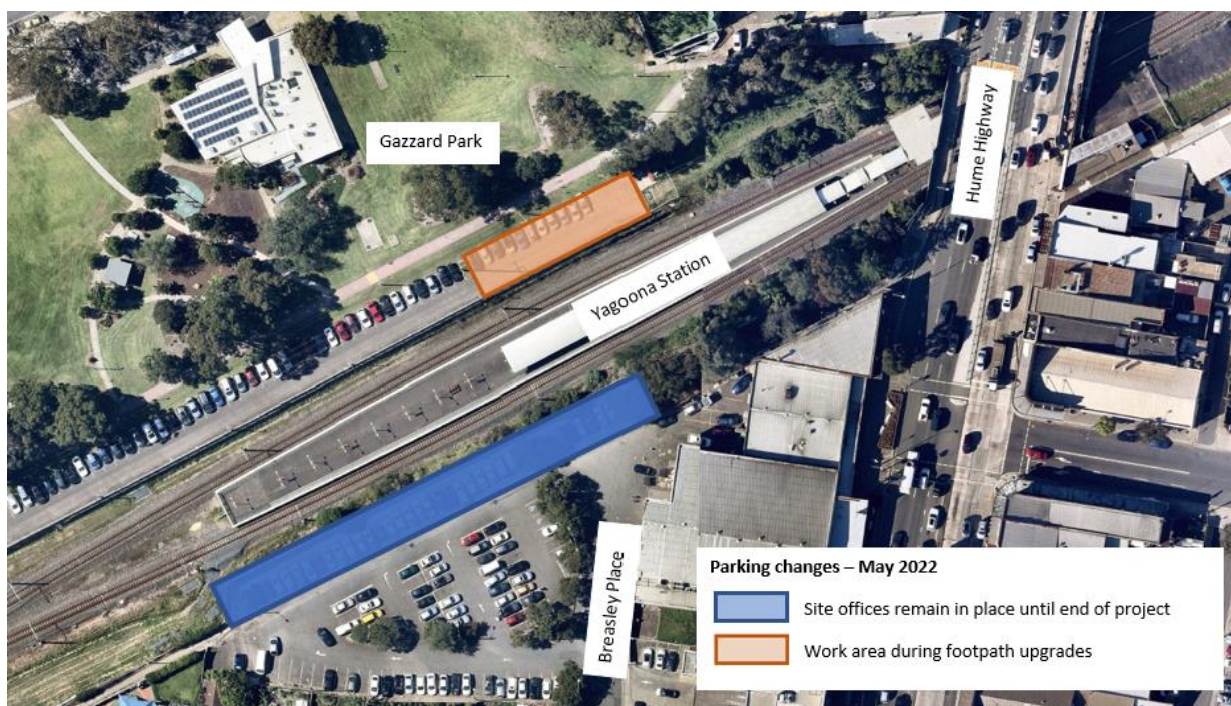
The footpath between Gazzard Park car park and the Hume Highway will remain **closed during May 2022** to enable upgrades to the existing footpath and construction of a new footpath to Cooper Lane.

Access to the station from Gazzard Park car park will be via Gazzard Park and Cooper Road during this time. Please follow the direction of detour signs.

Parking changes

Temporary parking changes in the Breasley Place car park for site offices will remain in place until the end of the project.

Temporary parking changes in the Gazzard Park car park will also be in place in May during footpath upgrades.



Construction hours

Standard construction hours are **7am to 6pm Monday to Friday and 8am to 1pm on Saturdays.**

For the safety of staff, customers and the community, some work will be completed outside standard construction hours. We will notify nearby residents and businesses in advance if we need to work outside these times.

Keep in touch

We will continue to keep the community informed with regular project updates.

Further information is available on the project website **transport.nsw.gov.au/yagoona**.

If you would like to be added to the project distribution list, or for more information on the Yagoona Station Upgrade, please contact us on **1800 684 490** or email **projects@transport.nsw.gov.au**.

For all urgent enquiries or complaints regarding construction activities, please call our 24-hour Construction Response Line on **1800 775 465**.

Contact us

If you have any questions or would like more on the Yagoona Station Upgrade project please contact our project team:



1800 684 490



projects@transport.nsw.gov.au



transport.nsw.gov.au/projects-tap



231 Elizabeth St, Sydney NSW 2000
PO Box K659, Haymarket NSW 1240



If you need help understanding this information, please contact the Translating and Interpreting Service on **131 450** and ask them to call us on **1800 684 490**