

Victoria Street Bridge piling works begin from 26 September 2023

Parkes Bypass

September 2023



Transport for NSW acknowledges the Traditional Custodians of the lands on which we work and pays respect to Elders past and present.

The Australian and NSW Governments are jointly funding the \$187.2 million Newell Highway upgrade. The Parkes Bypass between Maguire Road, and Barkers Road will improve connectivity, road transport efficiency and safety for local and interstate motorists.

Transport for NSW is continuing to deliver the Parkes Bypass and will begin construction of the Victoria Street Bridge. Victoria Street will continue to remain closed until the completion of these works late 2024.

What work are we doing?

- Piling works to facilitate construction of the Bridge.

The works, including mobilisation and demobilisation, will take approximately three weeks to complete. Abutment construction will begin once the piles are completed.

When and where we'll be working

Works will begin **from 26 September 2023**, weather permitting. Working hours are **7am to 6pm, Monday to Friday and 8am to 6pm, Saturday**. Should this work not proceed as scheduled, work will take place the following week.

What will this mean for you?

You may notice

- Noise from machinery and equipment
- Workers in protective clothing including coveralls and masks

Managing our Impacts

We aim to manage our work to avoid impacts to the community and the environment.

This includes:

- Using watercarts to suppress dust
- Establishing additional air monitors around the worksite to ensure dust and asbestos fibres do not pass the site boundary
- Arranging the work in stages at different locations
- Turning off machinery and vehicles when not in use.

Naturally Occurring Asbestos (NOA)

Work will include excavating material that contains NOA. **All works will be undertaken in full accordance with the Asbestos Management Plan controls and EPA requirements** and will be overseen by a Class A Asbestos Supervisor and Licensed Asbestos Assessor.

Daily air monitoring results are published on our website once a month.

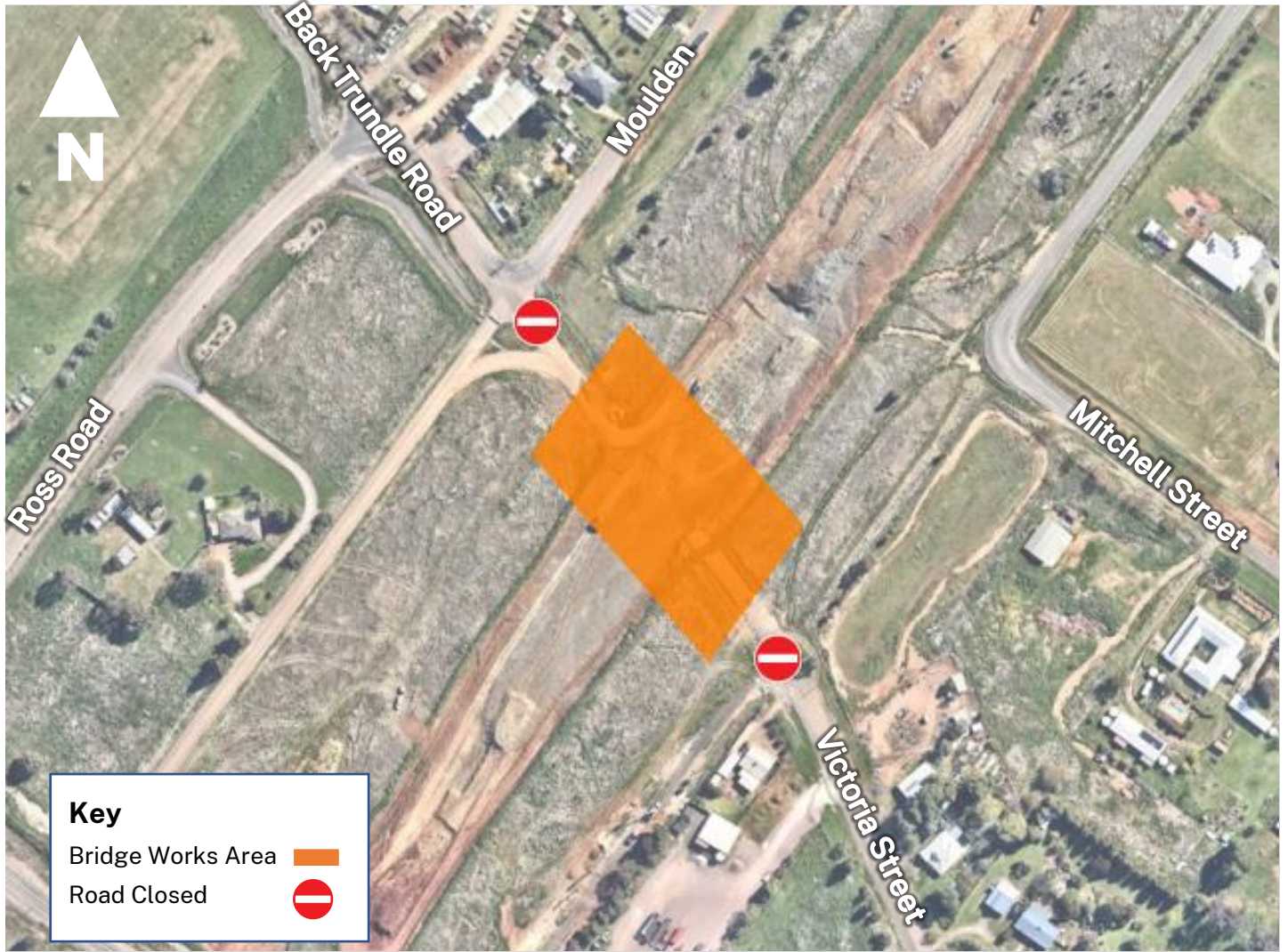
We will transport the NOA from the bridge works to designated containment cells within the project boundaries and cap it with clean excavated material.

Once excavation in NOA work areas is complete, the piling area will be isolated from NOA material and normal work operations will continue.

The Asbestos Management Plan has been developed in consultation with SafeWork and Environmental Protection Authority.



Location of work area



Contact us



Project Infoline **1088 741 636 (option 4)**



parkes.community@georgiou.com.au



nswroads.works/parkesupgrade



51-55 Currajong Street
PARKES, NSW 2870



Interpreter service

For languages other than English call 131 450
Arabic • Cantonese • Hindi • Mandarin • Vietnamese
لطلب خدمة الترجمة الشفهية للغات غير الإنجليزية اتصل بالرقم
131 450

獲取英語以外的其他語言傳譯協助服務可以致電**131 450**

अंग्रेज़ी के अतिरिक्त अन्य भाषाओं के लिए दुभाषिया सेवा **131 450**
पर कॉल करें

获取英语以外的其他语言口译协助服务可以致电**131 450**

Để có dịch vụ thông ngôn cho các ngôn ngữ khác tiếng Anh,
gọi số **131 450**



For the latest traffic updates:

Call 132 701, visit [live.traffic.com](https://live.traffic.nsw.gov.au) or
download the app Live Traffic NSW

www.transport.nsw.gov.au/privacy-statement#Your_Privacy