

Traffic and local road access changes progressively from 17 August 2023

August 2023



Australian Government



Transport for NSW acknowledges the Dharug people as the Traditional Custodians of the lands on which we work and pay respects to Elders past and present

Transport for NSW will continue to carry out work on the Mulgoa Road upgrade between Jeanette Street and Blaikie Road. From Thursday 17 August 2023, we will be progressively making some changes across Mulgoa Road and side streets which will be in place for the duration of the project.

What changes are we making?

Changes include:

- 40km/h speed limit introduction for the length of the project – as advised previously (temporary)
- Mulgoa Road western footpath closure from Factory Road to Wolseley Street (temporary)
- Factory Road left in only (permanent)
- Jeanette Street left in only (temporary)
- New roundabout at the Jeanette Street and Cornelius Place intersection (temporary)
- Hutchinson Crescent to become one-way only (temporary).

The temporary arrangements will be in place until the end of 2024.

When will the changes be made?

These changes will be introduced progressively commencing from **Thursday 17 August 2023**.

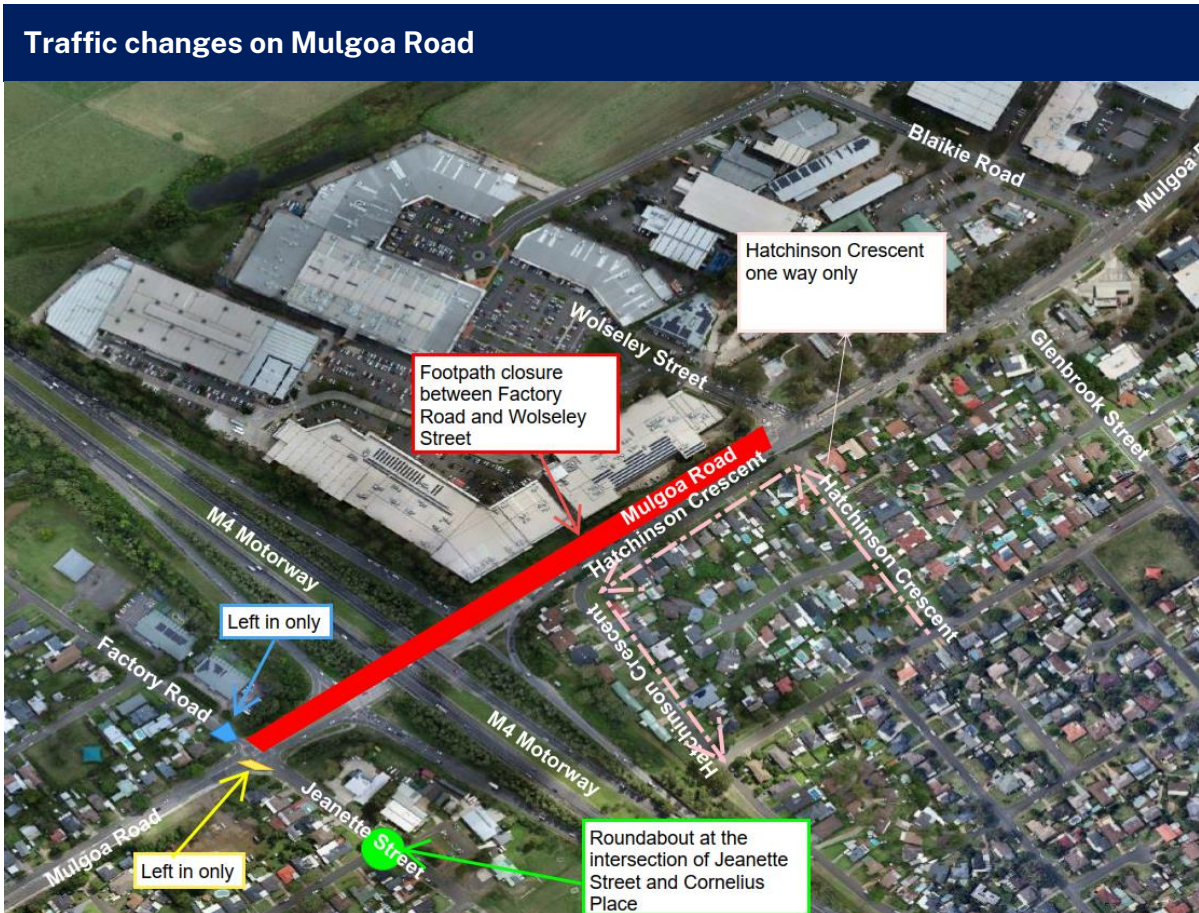
Why are the changes needed?

The traffic changes are needed to increase safety for workers on the project and for road users.

What are the changes

- **Factory Road left in only, left out to Mulgoa Road closed (permanent)** - This change will help traffic flow and increase safety by reducing congestion and the potential for accidents in the section of Mulgoa Road between Factory Road and the M4 Motorway interchange. Road users can use Gibbes Street and access Mulgoa Road from the Spencer Street traffic lights. This arrangement will be in place permanently.
- **Jeanette Street left in only – left out to Mulgoa Road closed (temporary)** - This change will allow utilities to be relocated under Jeanette Street and increase safety for workers and road users. Road users can access Mulgoa Road via the School House Road traffic lights.
- **A new roundabout at the intersection of Jeanette Street and Cornelius Place** will allow U-turns for vehicles using School House Road for school pick-up and drop-offs.
- **Mulgoa Road western footpath closure from Factory Road to Wolseley Street (temporary)**- This closure is necessary due to ongoing construction and utility work in that area. Pedestrians can reach Wolseley Street by crossing Mulgoa Road at the lights at Spencer Street/School House Road and crossing back to the western side at Wolseley Street lights.

- **Hatchinson Crescent to become one-way only (temporary)** – utilities will be relocated under Hatchinson Crescent, which will require closure of one side of the road.



What will this mean for you?

These changes will be in place for a period of time, so please follow all signage.

It is essential for all road users to adhere to the traffic changes, follow the guidance provided by

Traffic controllers and signs, and stay updated on the latest traffic conditions by calling 132 701, visiting livetraffic.com, or downloading the Live Traffic NSW App.

We appreciate your assistance in adhering to speed limits and keeping our workforce safe. We apologise for any inconvenience while we complete this important project.



Project Info and Complaints line
1800 733 084 – Option 1



Construction.mulgoaroadupgrade@transport.nsw.gov.au

<https://nswroads.work/jeanetestblaikierd>



Interpreter service

For languages other than English call 131 450
Arabic • Greek • Hindi • Mandarin • Vietnamese

لطلب خدمة الترجمة الشفهية للغات غير الإنجليزية اتصل
بالرقم **131 450**

Για υπηρεσίες διερμηνείας σε άλλες γλώσσες εκτός από
τα Αγγλικά καλέστε το **131 450**

अंग्रेज़ी के अतिरिक्त अन्य भाषाओं के लिए दुभाषिया सेवा
131 450 पर कॉल करें

获取英语以外的其他语言口译协助服务可以致电**131 450**

Để có dịch vụ thông ngôn cho các ngôn ngữ khác tiếng
Anh, gọi số **131 450**