



# Newcastle Inner City Bypass – Rankin Park to Jesmond

## Night work for geotechnical investigations from Sunday 29 January

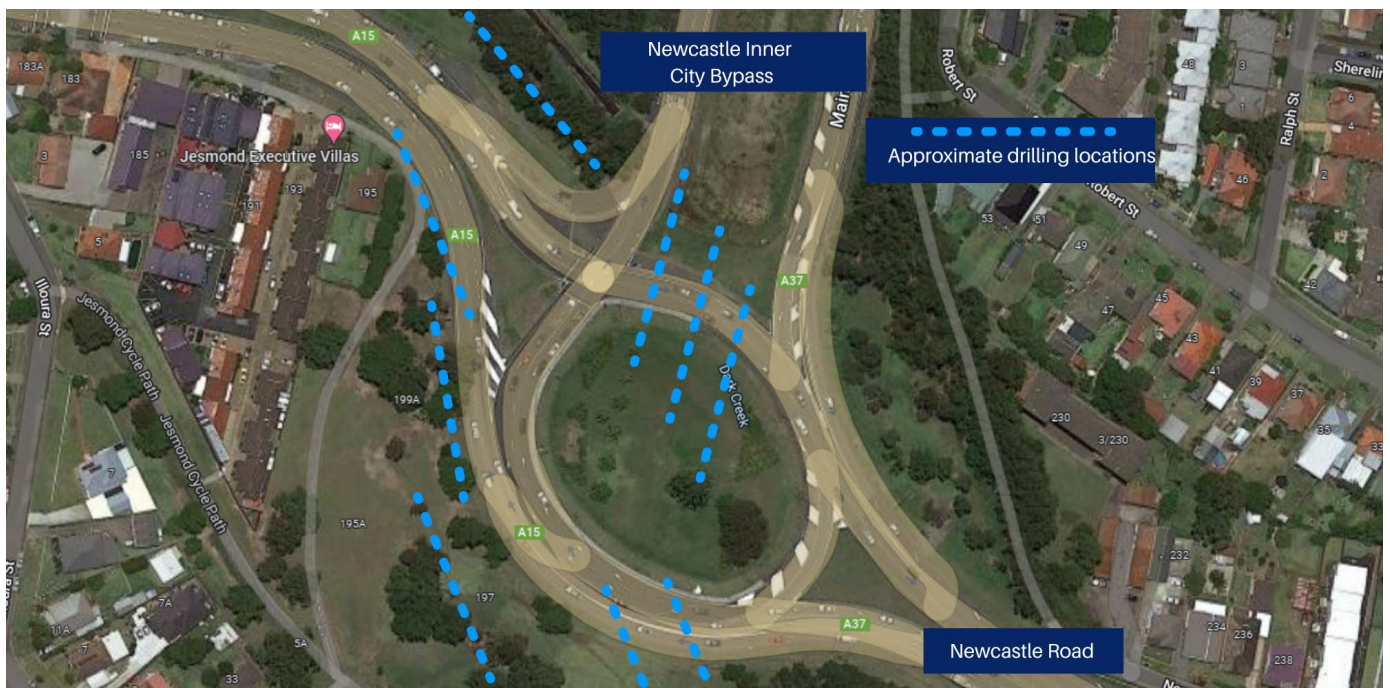
The Australian and NSW governments are funding construction of a 3.4 kilometre section of the Newcastle Inner City Bypass between Rankin Park and Jesmond. Transport for NSW has engaged Fulton Hogan to finalise the design and construct this section of the bypass.

### Night work in your area

Night work is planned for **Sunday 29 January to Tuesday 31 January**, between **6pm and 7am**, weather permitting. This is a continuation of the geotechnical investigations that occurred in late 2022 in and around the Newcastle Inner City Bypass and Newcastle Road, Jesmond to investigate ground conditions. We will be drilling boreholes in the live traffic lanes therefore out of hours work is the safest way to conduct this work. We will only work three nights in a row to allow the community respite from the night work.

### Details of planned work

Location	Activities	Occurrence
Newcastle Inner City Bypass, Newcastle Road, Jesmond and within the Jesmond roundabout	<ul style="list-style-type: none"> <li>Set up drill rigs and ancillary equipment at various locations as shown on the map below</li> <li>Drill to required depths</li> <li>Move equipment between locations</li> <li>Traffic control set up and pack up</li> <li>Lighting towers for the work area</li> </ul>	Up to 3 nights



## Traffic changes

There will be traffic controllers on site, temporary lane closures and drilling rigs positioned in the lanes throughout the night work.

These will move locations, please take care, keep to the sign posted speed limits and follow the direction of traffic controllers.

For the latest traffic updates, you can call 132 701, visit [livetraffic.com](http://livetraffic.com) or check the Live Traffic App.

## Why is work carried out at night?

Work is required outside standard construction hours to:

- improve safety by minimising the interactions between road users, pedestrians and workers
- minimise delays and journey times for motorists and businesses.

## How will the work affect you?

There will be drilling rigs and other plant and equipment working in different areas throughout the night work. The machinery and equipment will generate light, noise and vibration. We will make every effort to minimise these impacts by:

- turning off machinery and vehicles when not in use
- using non-tonal reversing alarms
- positioning of machines and directing temporary lighting down and away from homes
- planning activities close to residents within standard construction hours and scheduling noisy activities earlier in the night, where possible only working three nights in a row with a respite period of a week before recommencing night works
- monitoring noise to manage any potential impacts and adjusting our work, where possible.

Noise levels will be moderate. Directly affected residents will be contacted and advised of the likely impact and what we are doing to minimise disruption during the work.

## More information

If you would like to provide feedback, or have any questions about this work, please contact our project team on **1800 818 433** (24 hours), email [RP2JCommunity@fultonhogan.com.au](mailto:RP2JCommunity@fultonhogan.com.au) or mail to PO Box 186, Waratah, NSW 2298.

For more information about the project visit [nswroads.work/rp2j](https://nswroads.work/rp2j)

Thank you for your patience during this important work.

## Translating and interpreting service



If you need help understanding this information, please contact the Translating and Interpreting Service on **131 450** and ask them to call us on **1800 818 433**.