



February 2023

# Newcastle Inner City Bypass – Rankin Park to Jesmond

## Safety fencing installation from Monday 27 February 2023

The Australian and NSW governments are funding construction of a 3.4 kilometre section of the Newcastle Inner City Bypass between Rankin Park and Jesmond. Transport for NSW has engaged Fulton Hogan to finalise the design and construct this section of the bypass.

### What's happening?

Fulton Hogan will start installing safety fencing around the perimeter of the project alignment, including across trail paths leading onto the construction work area. The fences will ensure trail users do not inadvertently enter construction zones.

We will be working **Monday to Friday** between **7am** and **6pm** and **Saturday** between **8am** to **5pm** and expect to complete the work in **two weeks**, weather permitting. The work includes:

- Installing safety fencing on the alignment
- Fencing across trails leading onto construction zones.

Please see the map for the three locations where cyclists and pedestrians will be able to cross the new bypass when the project is completed.

### How will the work affect you?

At times we will use machinery and equipment which generates noise and vibration. We will make every effort to minimise disruption.

Trail users will no longer be able to use these paths and will need to use an alternative route.

Please see the map for the three locations where cyclists and pedestrians will be able to cross the new bypass when the project is completed.

### More information

If you would like to provide feedback, or have any questions or complaints about this work, please contact our project team on **1800 818 433** (24 hours), email [RP2JCommunity@fultonhogan.com.au](mailto:RP2JCommunity@fultonhogan.com.au) or mail to PO Box 186, Waratah, NSW 2298.

For more information about the project visit [nswroads.work/rp2j](https://nswroads.work/rp2j).

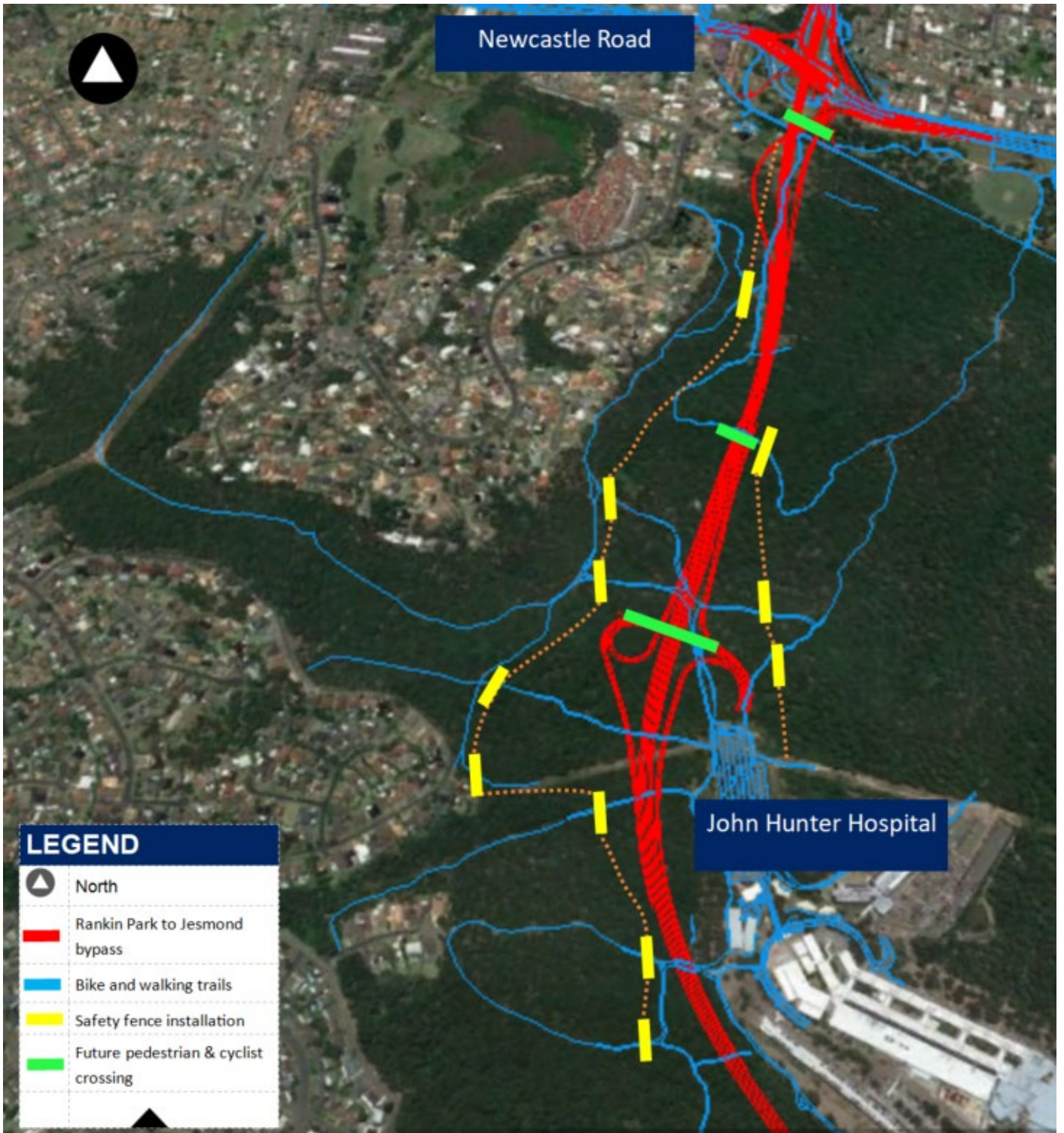
For the latest traffic updates, you can call 132 701, visit [livetraffic.com](https://www.livetraffic.com) or check the Live Traffic App.

Thank you for your patience during this important work.

### Translating and interpreting service



If you need help understanding this information, please contact the Translating and Interpreting Service on **131 450** and ask them to call us on **1800 818 433**.



This is an artist impression only and is not to scale