



Newcastle Inner City Bypass – Rankin Park to Jesmond

Out of hours work at New Lambton Heights from Monday 17 April

Work has now started on the 3.4 kilometre section of the Newcastle Inner City Bypass between Rankin Park and Jesmond. Transport for NSW has engaged Fulton Hogan to finalise the design and construct this section of the bypass.

Work in your area

Night work will be carried out from **Monday 17 April** until **Friday 2 June (Monday to Friday nights)**, between **6pm** and **7am**, weather permitting. Day work will continue to be carried out between **7am** and **6pm** from **Monday to Friday**, and **Saturday** between **8am** and **5pm**.

We will be removing vegetation and constructing site access tracks on McCaffrey Drive and Lookout Road. This work includes removing existing road lines, remarking with new road lines and installing more road barriers. Work will be carried out in or next to live traffic lanes, therefore out of hours work is the safest way to conduct this work. We will only work three nights in a week until the work is completed, to allow the community respite from night work.

We will offset the removal of trees in line with the NSW Biodiversity Offset Strategy. An arborist and an environmental supervisor will be on site to monitor the vegetation removal and all activities will occur within a defined area.

Details of planned work

Location	Activities	Occurrence
Lookout Road and McCaffrey Drive, New Lambton Heights	<ul style="list-style-type: none"> Vegetation removal using chainsaws, excavators and mulchers Construction and sealing of site access tracks and pavements including excavation and placement of materials using excavators, dump trucks / road trucks and rollers Removal of road lines and painting of new road lines using line marking trucks and high pressure water blaster Concrete saw and other hand tools for kerb removal Franna/crane for lifting of barriers Moving equipment, trucks and materials between locations A vacuum truck for non-destructive digging Service investigation using CCTV, survey and light vehicles Traffic control set up and pack up Lighting towers and pumps for the work area 	Up to 3 nights per week

Traffic changes

There will be traffic controllers on site, temporary lane closures, machinery operating in or next to the road lanes during night work.

These will move locations, please take care, keep to the sign posted speed limits and follow the direction of traffic controllers.

For the latest traffic updates, you can call 132 701, visit livetraffic.com or check the Live Traffic App.

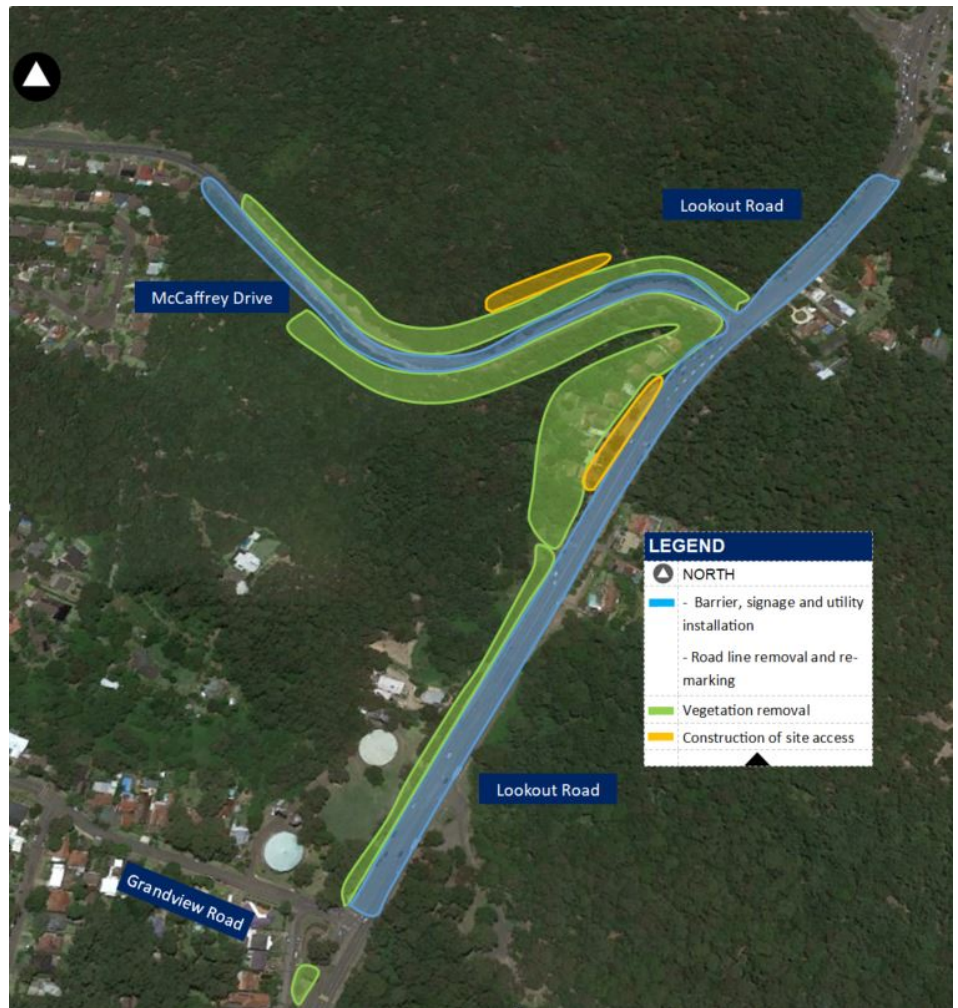
Why is work carried out at night?

Work is required outside standard construction hours to:

- improve safety by minimising the interactions between road users, pedestrians and workers
- minimise delays and journey times for motorists and businesses.

How will the work affect you?

There will be chainsaws and other plant and equipment working in different areas throughout the night work. The machinery and equipment generate light, noise and vibration.



This is an artist impression only and is not to scale.

We will make every effort to minimise these impacts by:

- turning off machinery and vehicles when not in use
- using non-tonal reversing alarms
- positioning of machines and directing temporary lighting down and away from homes
- planning activities close to residents within standard construction hours and scheduling noisy activities earlier in the night, where possible
- monitoring noise to manage any potential impacts and adjusting our work, where possible.

Noise levels will be moderate. Directly affected residents will be contacted and advised of the likely impact and what we are doing to minimise disruption during the work.

More information

If you would like to provide feedback, or have any questions or complaints about this work, please contact our project team on **1800 818 433** (24 hours), email RP2JCommunity@fultonhogan.com.au or mail to PO Box 186, Waratah, NSW 2298. For more information about the project visit nswroads.work/rp2j. Thank you for your patience during this important work.

Translating and interpreting service



If you need help understanding this information, please contact the Translating and Interpreting Service on **131 450** and ask them to call us on **1800 818 433**.