



Newcastle Inner City Bypass – Rankin Park to Jesmond

Out of hours work near Jesmond roundabout from Tuesday 3 October 2023

Work is continuing on the 3.4 kilometre section of the Newcastle Inner City Bypass between Rankin Park and Jesmond. Transport for NSW has engaged Fulton Hogan to finalise the design and construct this section of the bypass.

Work in your area

We will be installing underground conduits (pipes or tubes) to protect and route electrical cables. This includes removal of redundant services including overhead cables, hauling cable underground and through open trenches, installing poles and jointing. As part of our continuing work at Jesmond, we will be installing drainage structures including stormwater pits, precast concrete structures, and stormwater pipes as part of the new drainage system.

Day work will continue to be carried out between **7am** and **6pm** from **Monday to Friday**, and **Saturday** between **8am** and **5pm**. No work will be carried out on public holidays.

Night work will be required from **Tuesday 3 October** until **Thursday 30 November** between **6pm** and **7am** from **Sunday to Thursday**, weather permitting. This will include the removal of concrete medians and islands, milling and profiling existing road surfaces and installing new asphalt pavements for changes to traffic lanes and line marking. To allow for this work to take place, there will be an adjustment to traffic signals and road signage.

Work will be carried in or next to live traffic lanes or require the night-time bypassing of sewer lines so out of hours is the safest way to conduct this work.

Details of planned work – up to 5 nights per week

| Location | Activities | Equipment |
|--|---|---|
| Newcastle Inner City Bypass, Newcastle Road, Jesmond and within the Jesmond roundabout | <ul style="list-style-type: none"> Vegetation removal Utility works including sewer, power and gas Installation of underground and open trench conduits, cable hauling and removal of redundant services Drainage works including demolishing existing and installing stormwater pits, stormwater pipes and box culverts, connection to services Removing concrete kerbs, medians, islands, and pavements Pavement construction, temporary line marking and removal and asphaltting Service investigation using non-destructive digging Barrier placement including relocation and mechanical anchoring Trucks moving equipment between locations including deliveries of plant and materials Light pole and signage removal and installation of temporary lights and signage | <ul style="list-style-type: none"> Chainsaw/cherry picker/chipper Tracked and wheeled excavators Jackhammer, hammer drill, concrete saw Trucks, including rigids, watercarts, agitators Mobile cranes including frannas Concrete pumps, water pumps and drill rig Vacuum truck for non-destructive digging Backhoe, bobcat, skid-steer loader, roller Seal and aggregate trucks, rollers Compaction equipment Line marking truck, removal machine including a grinder and/or water blaster Asphalt paver, profiler, and support vehicles CCTV, survey and light vehicles, pole borer lifter Lighting towers and pumps for the work area |

| Location | Activities | Equipment |
|----------|------------|--|
| | | <ul style="list-style-type: none"> • Traffic control systems modifications including set up and pack up • Cranes and oversized vehicles for deliveries |

Traffic changes

During night work there will be traffic control on site, temporary lane closures and machinery operating adjacent to or in the road lanes.

These will move locations, please take care, keep to the sign posted speed limits and follow the direction of traffic controllers.

For the latest traffic updates, you can call 132 701, visit livetraffic.com or check the Live Traffic App.

Why is work carried out at night?

We work outside standard construction hours to:

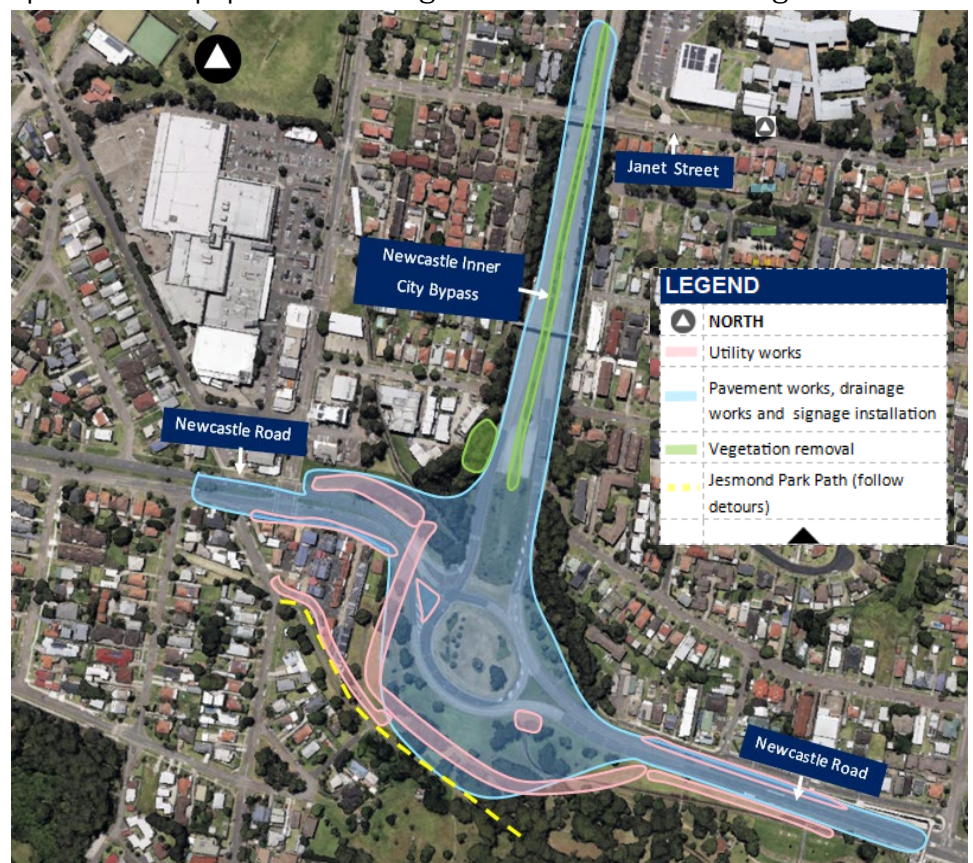
- improve safety by minimising the interactions between road users, pedestrians and workers
- minimise delays and journey times for motorists and businesses.

How will the work affect you?

There will be machinery and other plant and equipment working in different areas throughout the night work. The machinery and equipment generate light, noise and vibration.

We will make every effort to minimise these impacts by:

- turning off machinery and vehicles when not in use
- using non-tonal reversing alarms
- positioning of machines and directing temporary lighting down and away from homes
- planning activities close to residents within standard construction hours and scheduling noisy activities earlier in the night, where possible
- monitoring noise to manage any potential impacts and adjusting our work, where possible.



This is an artist impression only and is not to scale.

Noise levels will be moderate. Directly affected residents will be contacted and advised of the likely impact and what we are doing to minimise disruption during the work.

More information

If you would like to provide feedback, or have any questions or complaints about this work, please contact our project team on **1800 818 433** (24 hours), email RP2JCommunity@fultonhogan.com.au or mail to PO Box 186, Waratah, NSW 2298. For more information about the project visit nswroads.work/rp2j. Thank you for your patience during this important work.



Scan the QR code to visit our interactive portal and learn more about the project.

Translating and interpreting service



If you need help understanding this information, please contact the Translating and Interpreting Service on **131 450** and ask them to call us on **1800 818 433**.