

## More Trains, More Services

### Albion Park, Spring Hill, Kembla Grange and Croom

Transport for NSW | July until September 2022

#### More Trains, More Services

The More Trains, More Services program will simplify and modernise the rail network. To improve train services for customers on the south coast, platform extensions and asset upgrades are required at several stations along the T4 Illawarra Line.

In the coming months, we will be completing work in and around the rail corridor to support the introduction of the new Mariyung fleet which will provide a new level of comfort and convenience for intercity customers.

#### What's happening at Albion Park?

- Completing cable work and electrical upgrades to support the installation of additional rail infrastructure and improved rail services
- Upgrading the perimeter fence for improved safety and security
- Improving the earthing and bonding system 800 meters each side of the substation
- Trenching for underground cable containment and upgrading overhead wiring.

#### What's happening at Spring Hill?

- Preliminary site investigations including geotechnical assessments and survey work
- Construction of overhead wiring footings.

#### What's happening at Kembla Grange?

- Preliminary site investigations including geotechnical assessments and survey work
- Construction of overhead wiring footings.

#### What's happening at Croom?

- Preliminary site investigations including geotechnical assessments and survey work
- Electrical upgrade work to existing infrastructure.

We will continue to work with local communities and keep you informed about construction activities in your area.

#### Standard construction hours

Standard construction hours on this project are **7am-6pm Monday to Friday and 8am-1pm on Saturdays.**

#### Night work

Between July and August, most of our work is scheduled to be carried out during standard construction hours, however some activities are required to take place outside of these hours. We have scheduled this work take place during Sydney Trains trackwork periods when no trains are running, minimising disruptions to commuter services and improving the safety of our construction team and customers.

**Upcoming night work at each site:**

- **Friday 5 until Monday 8 August.**

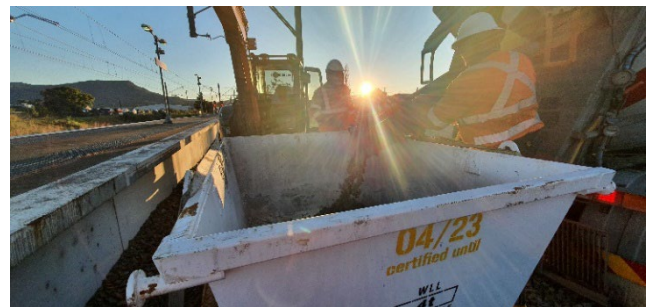
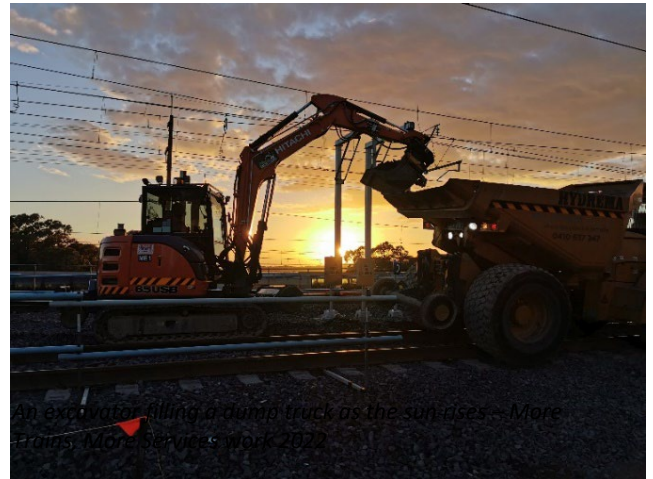
## New Mariyung Fleet

The introduction of a new fleet will provide improved customer safety, accessibility, and comfort. This fleet has been called 'Mariyung', the Durug word for Emu, in acknowledgement of the local Aboriginal culture.

## How we are reducing paper waste

***In the 2018-2019 financial year, Australia generated 5.9 million tonnes of paper and cardboard waste.***

We are exploring ways to better connect with the communities we work in while minimising impacts on the environment. To help us reduce paper waste, please visit [yoursay.transport.nsw.gov.au/mtms-albionpark](https://yoursay.transport.nsw.gov.au/mtms-albionpark) or scan the QR code below to complete a 3-question survey and let us know if you would prefer to receive our updates via email. We will consider no response as an indication you are open to visiting the project webpage for construction updates, and supportive of the project reducing paper notifications, where possible.



*The More Trains, More Service project team at work 2022*

### Contact Us

For more information or to subscribe to project updates:

Project information line: **1800 684 490**

24/7 construction response line: **1800 775 465**

[projects@transport.nsw.gov.au](mailto:projects@transport.nsw.gov.au)

[www.transport.nsw.gov.au/mtms](http://www.transport.nsw.gov.au/mtms)



### Translating and interpreting service

If you need help understanding this information, please contact the Translating and Interpreting Service on **131 450** and ask them to call us on **1800 312 772**.