

# Sydney Trains

## Ashfield Station improvement works

On Wednesday 26 April 2023

### What we're doing

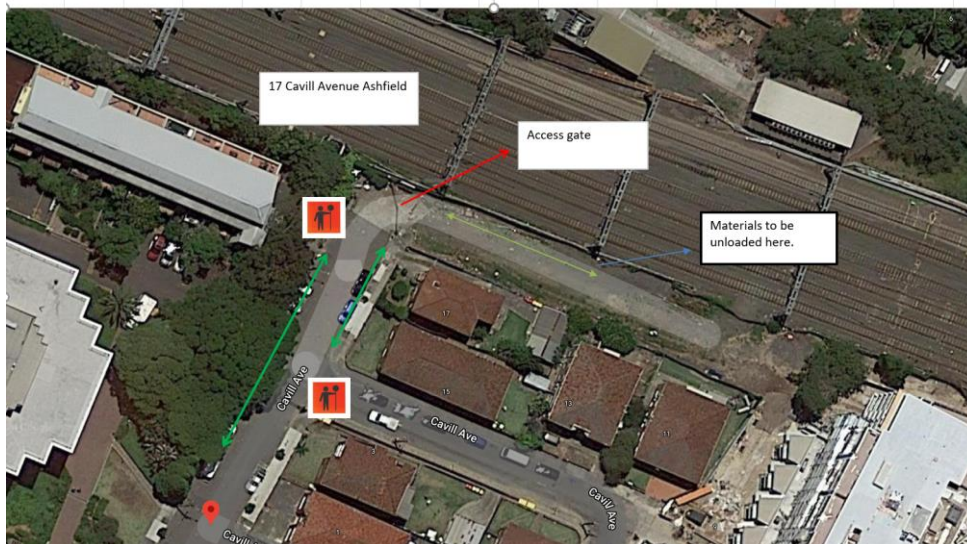
For the upcoming planned works to improve reliability of the network at Ashfield Station, Sydney Trains will deliver essential materials at 17 Cavill Avenue, Ashfield on Wednesday 26 April from 3 to 4.30am.

We understand this work will have an impact on you and your neighbours. We appreciate your patience and understanding.

### How this affects you

#### Noise

- These works may create additional noise at night.
- **Delivery will take place between 3am to 4.30am on Wednesday 26 April.**
- **Materials will be unloaded inside the railway corridor via access gate at 17 Cavill Ave, Ashfield.**
- A Semi trailer and Franna is required to undertake delivery and may be idling for the duration of the delivery.
- Please see the map below for the location of the works.



We apologise for any inconvenience and thank you for your cooperation during these essential works.

### Contact us

For upcoming work

[transport.nsw.gov.au/sydtraincommunity](https://transport.nsw.gov.au/sydtraincommunity)

To report environmental concerns (24hours) **1300 656 999**