



Australian Government



Barton Highway upgrade

Community update

October 2023

Transport for NSW



The first stage of the Barton Highway upgrade is almost complete, after the new lanes opened to traffic this month.

The Australian and NSW governments have together committed \$200 million towards the upgrade of the Barton Highway, with \$150 million provided by the Australian Government and \$50 million by the NSW Government. This work will improve road safety while enhancing tourism, driving economic growth and creating vibrant regional spaces.



Increased overtaking opportunities



Safer, smoother and more reliable journeys



Reduced fatalities and serious injuries

New lanes now open to traffic

The first stage of Barton Highway duplication is almost ready to hit its biggest milestone as the new lanes officially open to traffic.

Traffic is expected to move onto one side of the new lanes in mid to late October, with work then moving to prepare the existing highway for southbound-only traffic.

When the reconfiguration of the existing highway is complete, the seven-kilometre length of duplication from just north of the NSW-ACT border to just south of Kaveney's Road intersection will be open to four lanes, signalling the completion of the first stage of the Barton Highway upgrade.

Temporary traffic changes

When the left lanes of the new alignment are open in a temporary arrangement, northbound road users will travel on one lane of the seven kilometres of duplication while southbound traffic are reduced down to a single lane on the existing highway. See map below for more information.

This temporary traffic arrangement will be in place for about two months while work is carried out to prepare the existing highway and medians to duplicated traffic.

Work on the existing highway will include a fresh road surface along the road and central median, line marking, installing new signs and reinstating right hand turns.

When complete, all four lanes will open, signalling the completion of the first stage of duplication – expected to be in late 2023 or early 2024, depending on weather and conditions.

Access for residents

Residents with property accesses off the highway will soon be moved to a left-in, left-out arrangement to limit movements across lanes and improve safety.

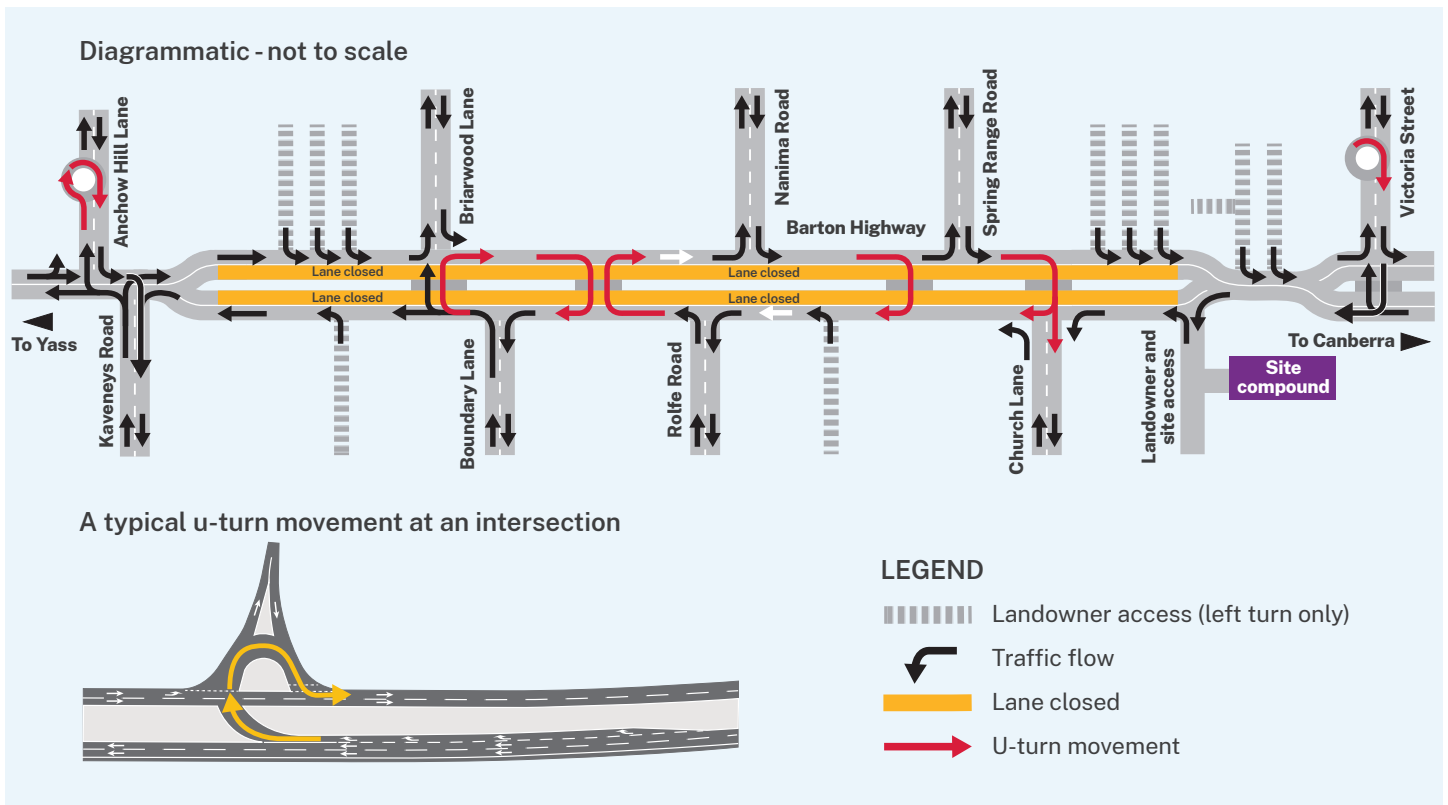
In some cases, this will require road users to travel in an opposite direction for a short distance until a safe u-turn facility is reached. Electronic signage and barriers will be in place to make this temporary arrangement as safe as possible while still allowing for construction.

Work at the border

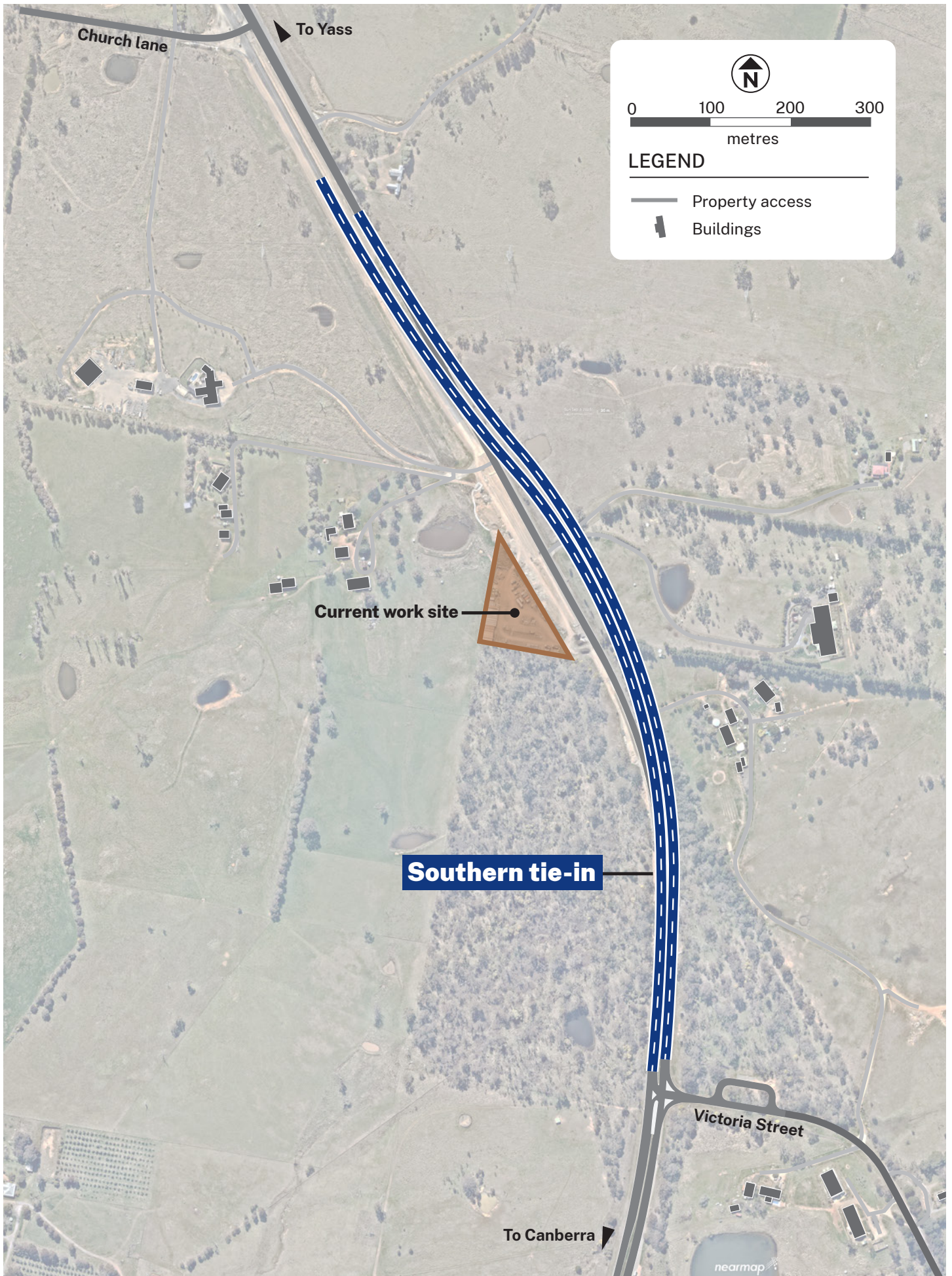
While the duplication from Hall to south of Kaveney's Road intersection is almost complete, a small section of highway at the NSW-ACT border has been reviewed to address feedback from the community.

A temporary tie-in has been built while the permanent solution has been progressed. We expect the permanent solution will be built around the same time as the second stage of duplication.

We now have a preferred option for the permanent tie-in concept design and are pleased to be able to share it with the community on page 3.



Temporary traffic changes on the Barton Highway from mid to late October.



A temporary tie-in at the NSW-ACT border is now in place. A permanent solution has been designed and is proposed to be built at the same time as the second stage of duplication.

Next stage of duplication

Planning for the second stage of duplication is well under way. The project team has been working closely with key stakeholders to ensure the duplication minimises its impact on the community, road users and environment. The second stage of duplication will include Kaveneys Road intersection.

Environmental investigations and ground surveys for the second stage of duplication are under way and we'll be sharing these findings along with the concept designs for community feedback next year.



Seven kilometres of duplication has been completed on the Barton Highway.



Barton Highway corridor upgrade team representatives chat at the Murrumbateman Landcare Group meeting in August.

Kaveney's Road intersection

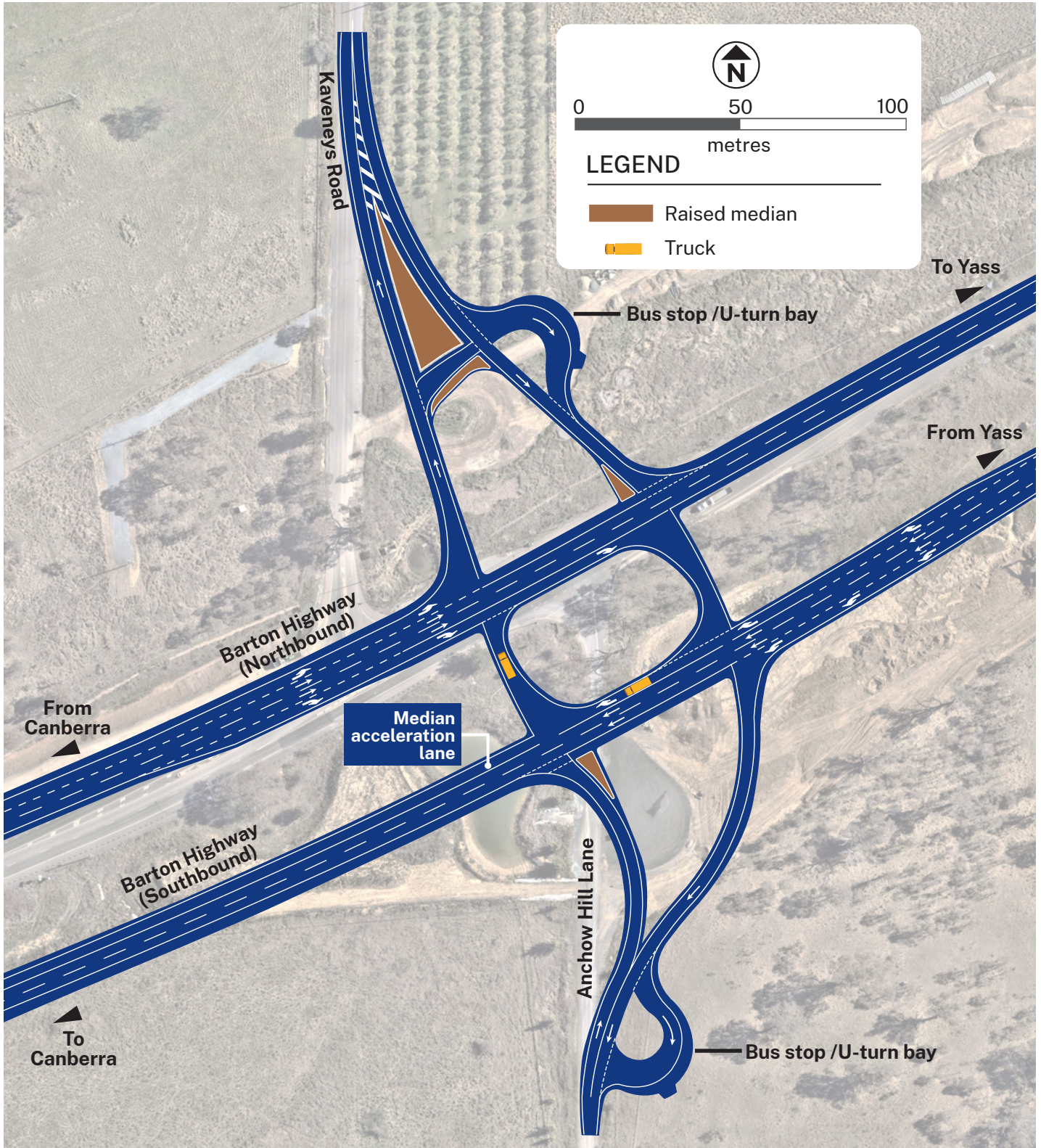
The early design for Kaveney's Road intersection has been completed, with the intersection to be delivered as part of the second stage of duplication.

Key features of the design include:

- a wide median measuring about 45 metres wide, allowing trucks to safely queue without blocking oncoming road users

- turnaround bays allowing safe turning movements for buses and heavy vehicles
- lanes allowing all turning movements, not just left-in, left-out
- a less steep southbound carriageway, allowing more efficient up-hill acceleration.

The preferred concept design for Kaveney's Road intersection has now been finalised and we are pleased to be able to share it with the community below.



Kaveney's Road intersection will be built as part of the second stage of Barton Highway duplication.



Come and chat to us

We will have a site at this year's Murrumbateman Field Days, at Murrumbateman Recreation Grounds on Saturday and Sunday, 21 and 22 October. You can find us at site Y35 where we will have the latest updates on the project and our team will be on-hand to answer the community's questions.

Transport will also be promoting road safety and its Be Truck Aware campaign at sites Y36 and Y37.



The Barton team will be back at this year's Murrumbateman Field Days to chat to the community.



60,000 tonnes of road surface rolled out



254,000 cubic metres of earthwork completed



Project hit by 200 wet weather days

Contact us

If you have any questions or would like more information on the project, please contact our project team:

-  1800 931 250 (toll free)
-  barton.highway@transport.nsw.gov.au
-  nswroads.work/barton
-  Customer feedback
PO Box 484
Wagga Wagga
NSW 2650



Translation and interpreting service

If you need help understanding this information, please contact the Translating and Interpreting Service on 131 450 and ask them to call us on 1800 931 250

Use our QR code to access the project webpage

