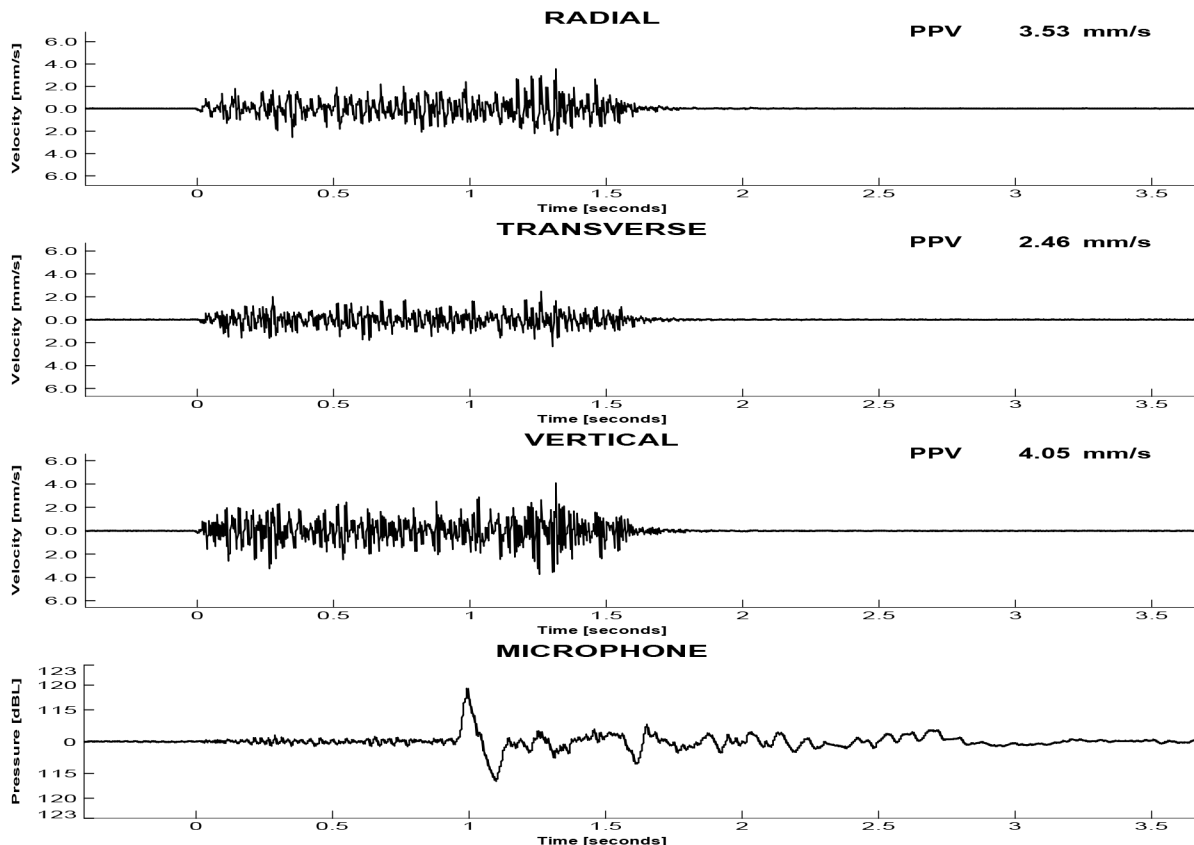


Bombo Quarry

Location: Stn 'C'
 Triggered by : Vector Sum

Date: 2023-03-16
 Time: 12:18:23

Triggers Set : Vector Sum: 0.23mm/s, Channels 1-3: 0.28mm/s



RESULTS

Peak Vector Sum Velocity : 4.88 mm/s at 1.314 s
 Peak Overpressure : 119.4 dBL at 0.993 s

	Peak [mm/s]	Frequency (ZC at Peak) [Hz]	Time (Rel. to Trigger) [s]	Acceleration (Est. from PPV) [mm/s ²]	Displacement (Est. from PPV) [mm]
Radial	3.53	46.8	1.313	588	18.9
Transverse	2.46	48.2	1.260	491	12.7
Vertical	4.05	64.5	1.314	998	15.7

Monitoring conducted by:
 (Your Company Name:Your Name)

TM Serial Number : 4420 Last Calibration: 2022-06-13