

Transport for NSW

# Captains Flat Rail Corridor Remediation Project

---

Community Information  
Session

21 November 2022

[transport.nsw.gov.au](https://transport.nsw.gov.au)



OFFICIAL



## Acknowledgement of Country

---

I acknowledge and pay my respects to the Traditional Custodians of the lands on which we meet, especially Elders, past and present and acknowledge other Aboriginal people here and their respective cultures and nations.

---

# Introductions

**Vicki Oszko**, Director, Regional Property & Asset Renewal

**Jo McLoughlin**, Project Manager, Land Management

**Lisa Cahill**, Community Engagement Manager

**Norm Nikolich**, Senior Community Engagement Officer

**Martin Cocca**, Senior Manager Transport Technical Solution, South

# Agenda

## **1 Transport for NSW update:**

- Project and site background
- Testing results
- Work to date
- Remediation Options Assessment (ROA)
- Future land use
- Remediation Action Plan (RAP)
- Voluntary Management Proposal (VMP)
- Next Steps
- Keeping the community safe
- Information about lead

## **2 Questions and answers:**

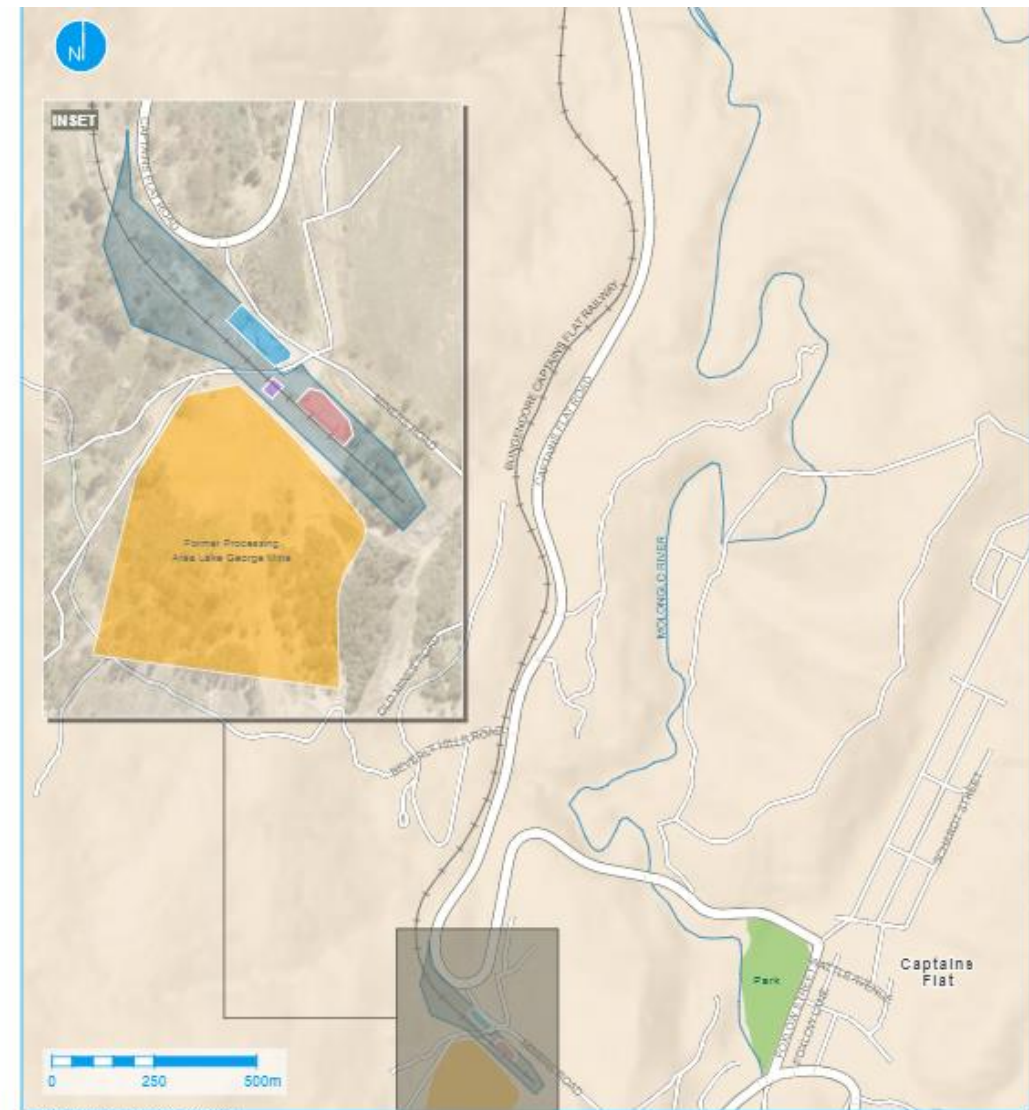
- Opportunity for questions from the audience

# Background

The site is a non-operational rail corridor and also forms part of the proposed Captains Flat Heritage Trail.

Elevated levels of lead relate to the historical mining load-out facility.

Some asbestos was also identified in surface soils at the Site, including the Copper Creek rail embankment and in surface soils adjacent to the rail corridor.



Aerial photography by Maronag, 10th 01/03/2021

## Key

- |               |                                         |
|---------------|-----------------------------------------|
| Declared area | Former Loadout Facility/Weigh Bridge    |
| Railway       | Former Processing Area Lake George Mine |
|               | Former Station Masters Residence        |
|               | Captains Flat State Emergency Services  |



A4  
1:12,000



# Site photos



Former loadout facility



Copper Creek Road crossing



Rail corridor looking east

# Results of testing

- Lead levels varied from low to levels above the guidelines for industrial land.
- The highest levels of lead were found in:
  - The Load Out area
  - Rail corridor and embankment
- Some asbestos was found in the embankment and in the rail corridor which was disposed of at a licensed waste facility.



# What have we done to date?

2020	2021	2022
<ul style="list-style-type: none"><li>• Identified lead in soils</li><li>• Environmental Site Assessment</li><li>• Reported site to EPA</li><li>• Appointment of site Auditor</li><li>• Preliminary site Investigation</li><li>• Initial IEMP completed</li></ul>	<ul style="list-style-type: none"><li>• Queanbeyan-Palerang Regional Council &amp; NSW SES advised of contamination</li><li>• Rail corridor site declared as significantly contaminated by NSW EPA</li><li>• VMP completed and approved</li><li>• Interim controls installed to restrict access to rail corridor</li><li>• Interim control measures installed at SES facilities</li></ul>	<ul style="list-style-type: none"><li>• IEMP updated and submitted to EPA</li><li>• Detailed Site Investigation completed</li><li>• Remedial Options Assessment completed</li></ul>



# Remedial Options Assessment

	Options	Permissible	Likely to Succeed
1	Onsite treatment to destroy the contaminants or reduce risks to acceptable levels.	Yes	Unlikely
2	Offsite treatment followed by return to site	Potentially	Unlikely
3	In-situ capping without chemical treatment	Yes	Unlikely
4	In-situ capping Integrating chemical treatment to reduce contaminants in leachate by in-situ mixing of pH amendment	Yes	Unlikely
5	Excavation and consolidation onsite Consolidated beneath cap (unlined)	Yes	Unlikely
6	Excavation and consolidation onsite Consolidated in onsite containment cell (lined)	Yes	Unlikely
7	Off-site disposal (at landfill)	Yes	Possible
8	Containment at Lake George (legacy) Mine Northern Dump	Yes	Possible

# Future Land Use Assessment

## Land Use A - Recreational / public open space

This option will see the rail corridor remediated to a level that will enable the land to be used for recreational / public open space. It will allow for the reinstatement of the Captains Flat Heritage Trail. **This is the recommended option as it will achieve the best use of the land and the best outcome for the community.**

## Land Use B - Commercial / industrial

This option will restrict the use of the land to commercial / industrial activities. The Site will remain fenced off and the Captains Flat Heritage Trail will not have access to the area and heritage items in the corridor. It will have the residual risk of ongoing migration from the corridor to adjoining private properties.



# Feasible options

The options were assessed and selected based on recreational / public open space land use and commercial / industrial land use. The potential feasible options for remediation are:

<b>Option 7</b>	<b>Option 8</b>
Excavate contaminated soil followed by off-site disposal (at landfill), and collection and capping of contamination	Excavate contaminated soil followed by off-site disposal (Northern Dump), and collection and capping of contamination
Unfavoured option for urban residential and public open space land use	Preferred option for urban residential and public open space land use

# Scope of work for preferred option – Option 8

- Excavation of soils exceeding recreational/open space human investigation levels
- Excavation of soils exceeding commercial/industrial human investigation levels in SES leased area
- Transport and dispose of waste material to the Northern Dump
- Excavation/consolidation of remnant soils exceeding Ecological Investigation Levels onsite
- Consolidation and capping of contamination within Copper Creek culvert embankment (through construction of sandstone block walls)
- Importing clean soil to construct a cap over consolidated Ecological Investigation Level exceedances and reinstate the existing landform
- Landscaping to support reuse under Recreation / Public Open Space land use scenario
- Preparing a Long-Term Environmental Management Plan to manage contamination retained onsite post remediation
- Removing existing fencing that limits access to the rail corridor off Copper Creek Road



# Remediation Action Plan (RAP)

- A RAP is a detailed plan on how the remediation will be implemented and validated.
- We have developed a RAP based on the preferred remediation option
- Once this is published it will be published on Transport website, and the community will have 28 days to comment via email to [landassessment@transport.nsw.gov.au](mailto:landassessment@transport.nsw.gov.au)
- We will be submitting the RAP to the EPA in November 2022





# Voluntary Management Proposal (VMP)

## What is a VMP?

A VMP is a plan on how contamination will be managed. It includes activities and due dates to complete the work. The VMP is approved by the NSW EPA. Failure to satisfactorily complete any component by the due date may result in action by the EPA.

## What is a Section 44 application under the Contaminated Land Management Act 1997?

An application to EPA by Transport to amend the approved VMP. We made an application to amend the approved VMP. In November we will make an application to amend the current VMP to reflect updated/later timelines required to complete remediation.

The VMP, including these proposed changes, is available on the website at [transport.nsw.gov.au/captains-flat](https://transport.nsw.gov.au/captains-flat)

We will update you when the document is available on our website.

# Voluntary Management Proposal (VMP)

Activity	Original deadlines	Proposed new deadlines
Develop Detailed Design & Engineering	December 2022	September 2023
Preliminaries required to implement remediation including planning permits and approvals and procurement	March 2023	November 2023
Complete remediation	December 2023	October 2024
Complete validation reporting and Auditor review of remediation	June 2024	December 2024

# Next steps

2022	2023	2024
<p><b>Nov to Dec:</b> Seek community and stakeholder feedback on the Remediation Options Assessment &amp; Remediation Action Plan. Information will be at <a href="https://www.nsw.gov.au/regional-nsw/captains-flat">https://www.nsw.gov.au/regional-nsw/captains-flat</a> Consultation will be open for 28 days.</p> <p><b>Nov:</b> Submit S.44 Application to EPA to amend VMP. Comments can be provided to NSW EPA.</p>	<p><b>Sept 2023:</b> Finalise investigations and Detailed Design and Engineering</p> <p><b>Nov 2023:</b> Planning approvals and remediation preliminaries</p> <p><b>Dec 2023:</b> Remediation work starts</p>	<p><b>Oct 2024:</b> Remediation work is completed</p> <p><b>Dec 2024:</b> Remediation validated</p>

# Keeping the community safe

We are committed to protecting your safety.

Measures we have implemented to date include:

- Fencing the area to create an exclusion zone and installing warning signs.
- Engaging Queanbeyan–Palerang Regional Council to spray seal the Copper Creek Road crossing and road surfaces in the nearby SES compound. This will prevent access to the contaminated soils and we will make sure this capping layer is maintained.



# Information about lead

- For more information about lead exposure, please see the [NSW Health website](#).
- For more information about managing lead in the environment see the [EPA website](#).



# Keeping the community informed



Updates as planning work progresses



Updates online - [transport.nsw.gov.au/captains-flat](https://transport.nsw.gov.au/captains-flat)



Seek input to Remedial Options Assessment



Updates before and during remediation



Email - [landassessment@transport.nsw.gov.au](mailto:landassessment@transport.nsw.gov.au)



Phone - 1800 491 566

---

# Questions?

