

Regional Rail

Mindyarra Maintenance Centre

Community Notification – Out of hours work

Transport for NSW is replacing the existing NSW regional rail fleet of XPT, XPLOER and Endeavour trains. This fleet provides services for customers who travel from a number of NSW regional centres to Sydney, as well as Canberra, Melbourne and Brisbane.

To support the new fleet, a new purpose-built maintenance centre is being constructed in Dubbo. Momentum Trains is delivering the Regional Rail Project on behalf of Transport for NSW.

Upcoming work – Public Holidays in April 2023

We will be working at **Mindyarra Maintenance Centre**, during Public Holidays in April, from **8am to 6pm**, on **Friday 7, Saturday 8, Sunday 9, Monday 10, and Tuesday 25 April 2023**, weather permitting.

Activities will include concreting, electrical, plumbing, and drainage work, installation of underground services, track work, and concrete platforms.

To minimise disruption to the rail network and for the safety of staff, rail customers, and the community, this work will be completed outside standard construction hours.

Construction work at the Centre continues during standard construction hours.

What you may notice

Heavy machinery will continue to operate on site.

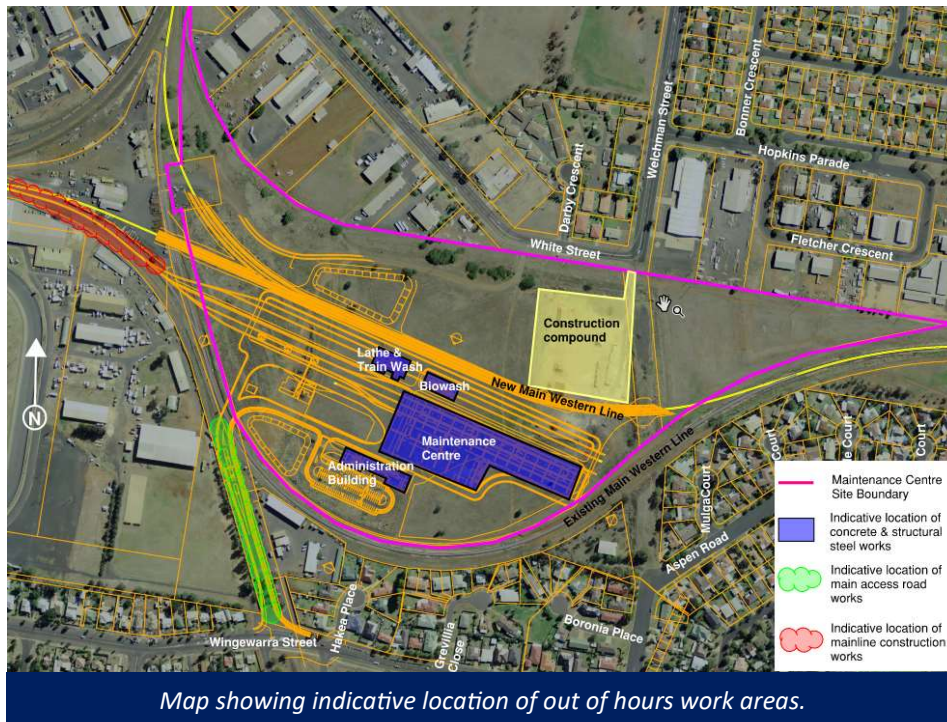
There may also be deliveries of materials such as concrete, pipes, cabling, formwork, steel reinforcement and structural steel. Mobile cranes will be used on site to install the structural steel. Deliveries will arrive via our construction compound off White Street, or from the centre's main access on Wingewarra Street.

Equipment to be used includes, but is not limited to:

- scissor lifts
- knuckle booms
- bobcats
- power tools
- hand tools
- concrete helicopter
- concrete pump
- concrete vibrator
- concrete agitator trucks grader
- rollers
- body trucks
- excavators.

Transport for NSW aims to keep disruption to the community to a minimum. We apologise for any disturbance these activities may cause.

Map of work area



More information

Working closely and effectively with the local community is a priority for Transport for NSW and Momentum Trains. We will keep you up to date about upcoming works with regular notifications and updates on our website.

If you have questions or concerns about this work, or would like more information about the Regional Rail Project, please contact **1800 684 490**, email projects@transport.nsw.gov.au or visit transport.nsw.gov.au/projects/current-projects/regional-rail.

For urgent enquiries or complaints about our construction activities, please contact our 24-hour construction response line on **1800 775 465**.



This document contains information about public transport projects in your area. If you require the services of an interpreter, please contact the Translating and Interpreting Service on **131 450** and ask them to call the Transport Projects Division on **(02) 9200 0200**. The interpreter will then assist you with translation.

For more information call **1800 684 490**,
Email projects@transport.nsw.gov.au
visit transport.nsw.gov.au/projects/current-projects/regional-rail
For urgent enquiries or complaints regarding construction, please call 24 hours **1800 775 465**